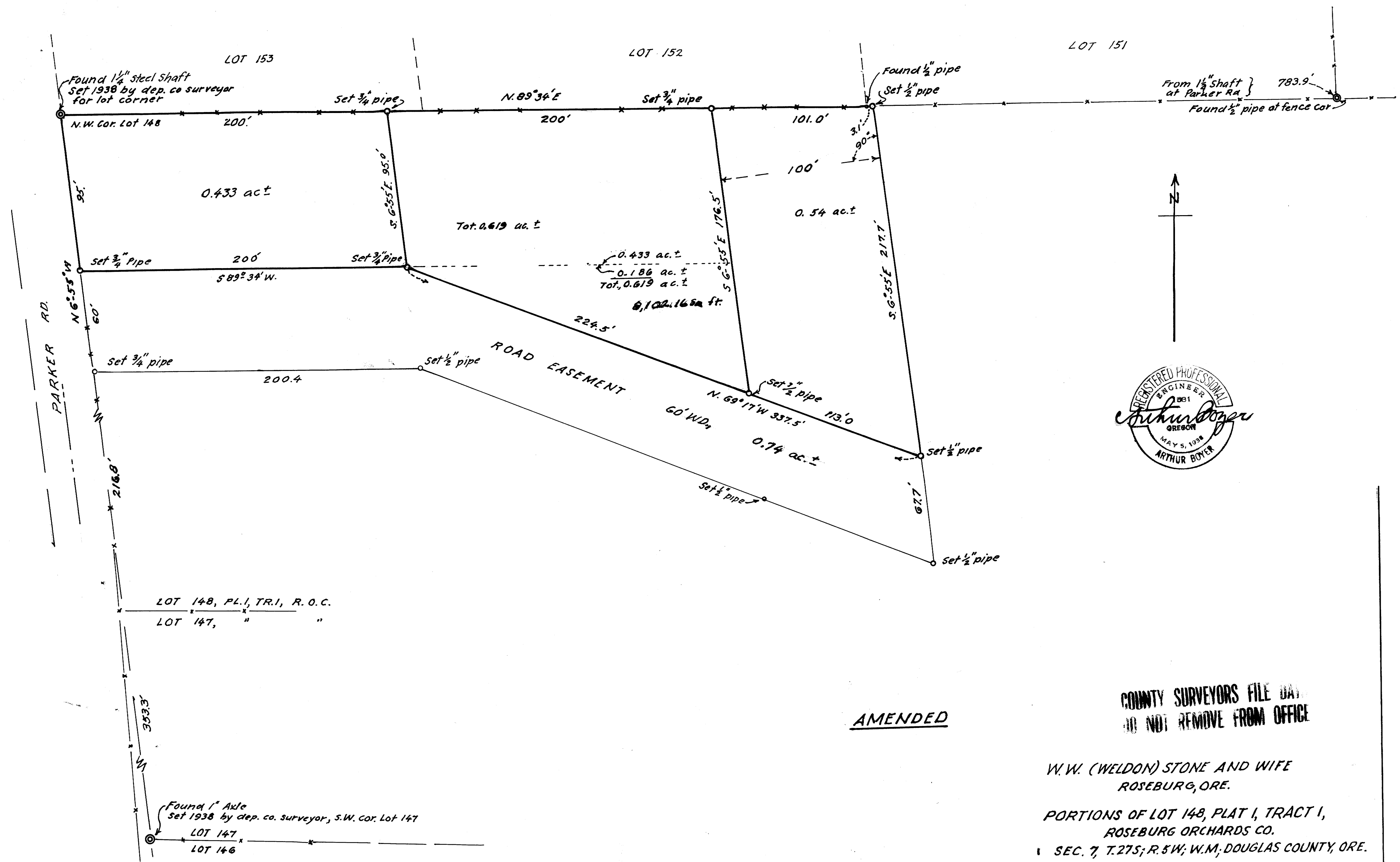


FILED  
RECEIVED  
JUL 29 1970  
COUNTY SURVEYOR  
DOUGLAS COUNTY, ORE.

M 39 - 77A



AMENDED

COUNTY SURVEYORS FILE DAY  
DO NOT REMOVE FROM OFFICE

W.W. (WELDON) STONE AND WIFE  
ROSEBURG, ORE.  
PORTIONS OF LOT 148, PLAT I, TRACT I,  
ROSEBURG ORCHARDS CO.  
SEC. 7, T. 27S; R. 5W; W.M.; DOUGLAS COUNTY, ORE.

JULY 1970 AB. 1" = 40 ft.

M 39 - 77A