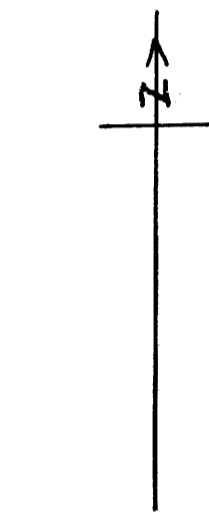
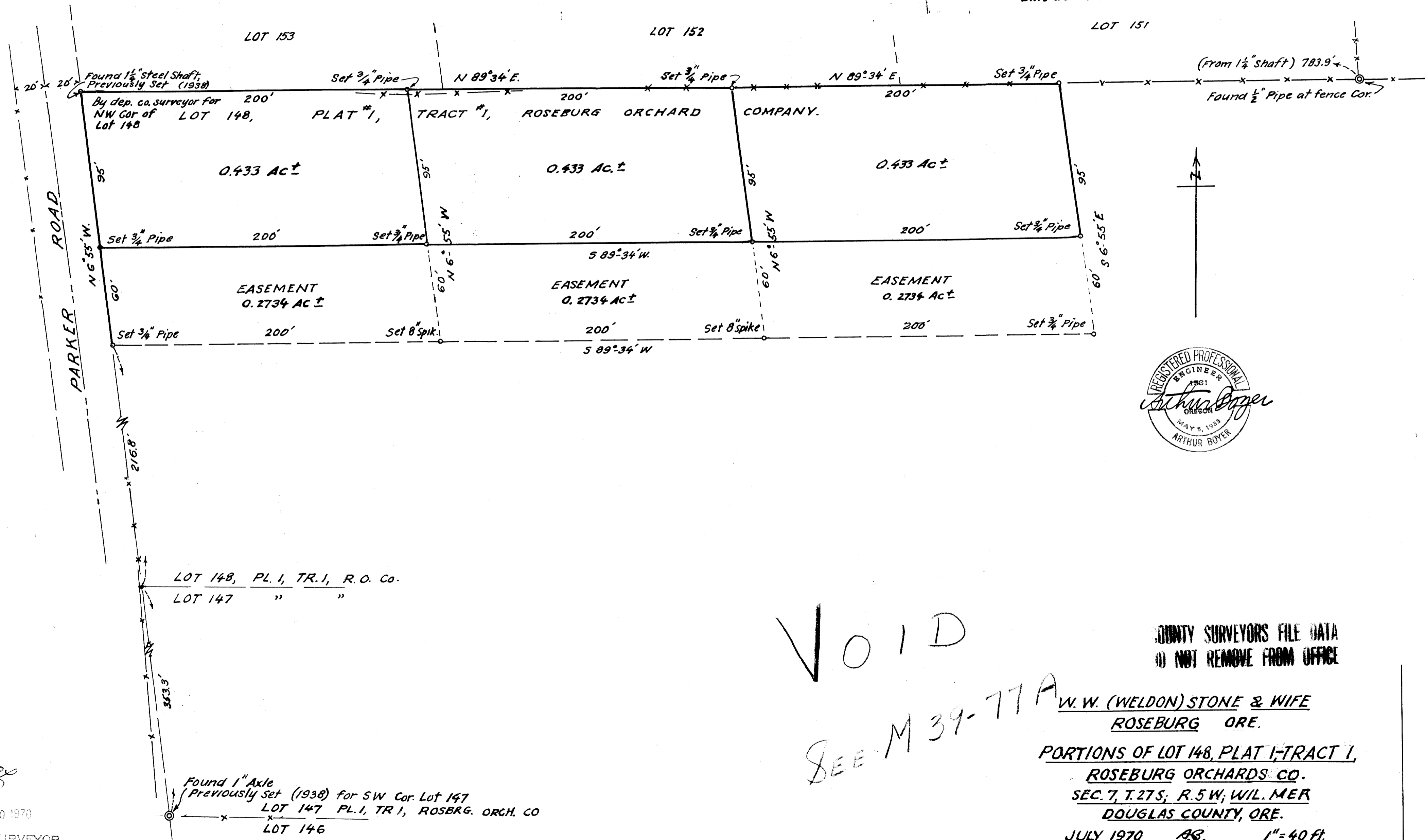


Acreeage: in 3 Tracts, 0.433x3 = 1.299 ac. ±
in 3 Easmts, 0.2734x3 = 0.820 ac. ±
2.119 ac. ± tot.



VOID
SEE M 39-77A

COUNTY SURVEYORS FILE DATA
DO NOT REMOVE FROM OFFICE

W. W. (WELDON) STONE & WIFE
ROSEBURG ORE.
PORTIONS OF LOT 148, PLAT I, TRACT I,
ROSEBURG ORCHARDS CO.
SEC. 7, T. 27S; R. 5W; WIL. MER
DOUGLAS COUNTY, ORE.
JULY, 1970 AB. 1" = 40 ft.

FILED
RECEIVED
JUL 10 1970
COUNTY SURVEYOR
DOUGLAS COUNTY, ORE.