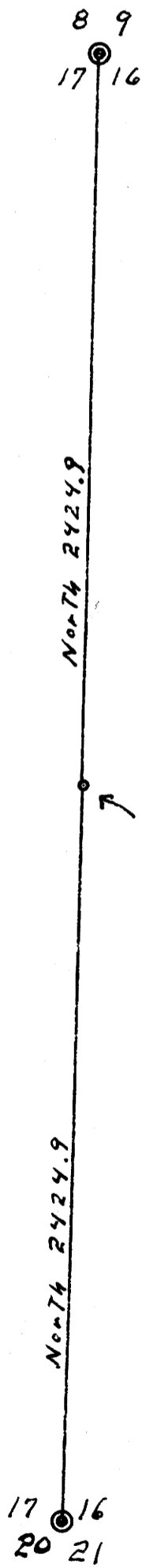


FILED
RECEIVED

JUL 10 1970

COUNTY SURVEYOR
DOUGLAS COUNTY, ORE.

T. 21 S., R. 7 W., W. M. SECT. 16
INTERNATIONAL PAPER CO LONG-BELL-DIV.
GADENER, ORE. APRIL 1970



⊙ Found BRASS CAPS set by County Surveyors Office

○ Set 5/8" Steel Rod

REGISTERED
OREGON
LAND SURVEYOR

Wilford N. Haines

MAY 7, 1948
WILFORD N. HAINES
239