

SURVEY IN SECTS. 24, 25, TWP. 26 SOUTH, RANGE 6 WEST, W.M.
Surveyed for the Oregon State Game Commission by Don E. Garrett
June 1970

BEARING ARE BASED ON A SOLAR OBSERVATION TAKEN MAY 26, 1970.

FILED
RECEIVED

JUN 8 1970

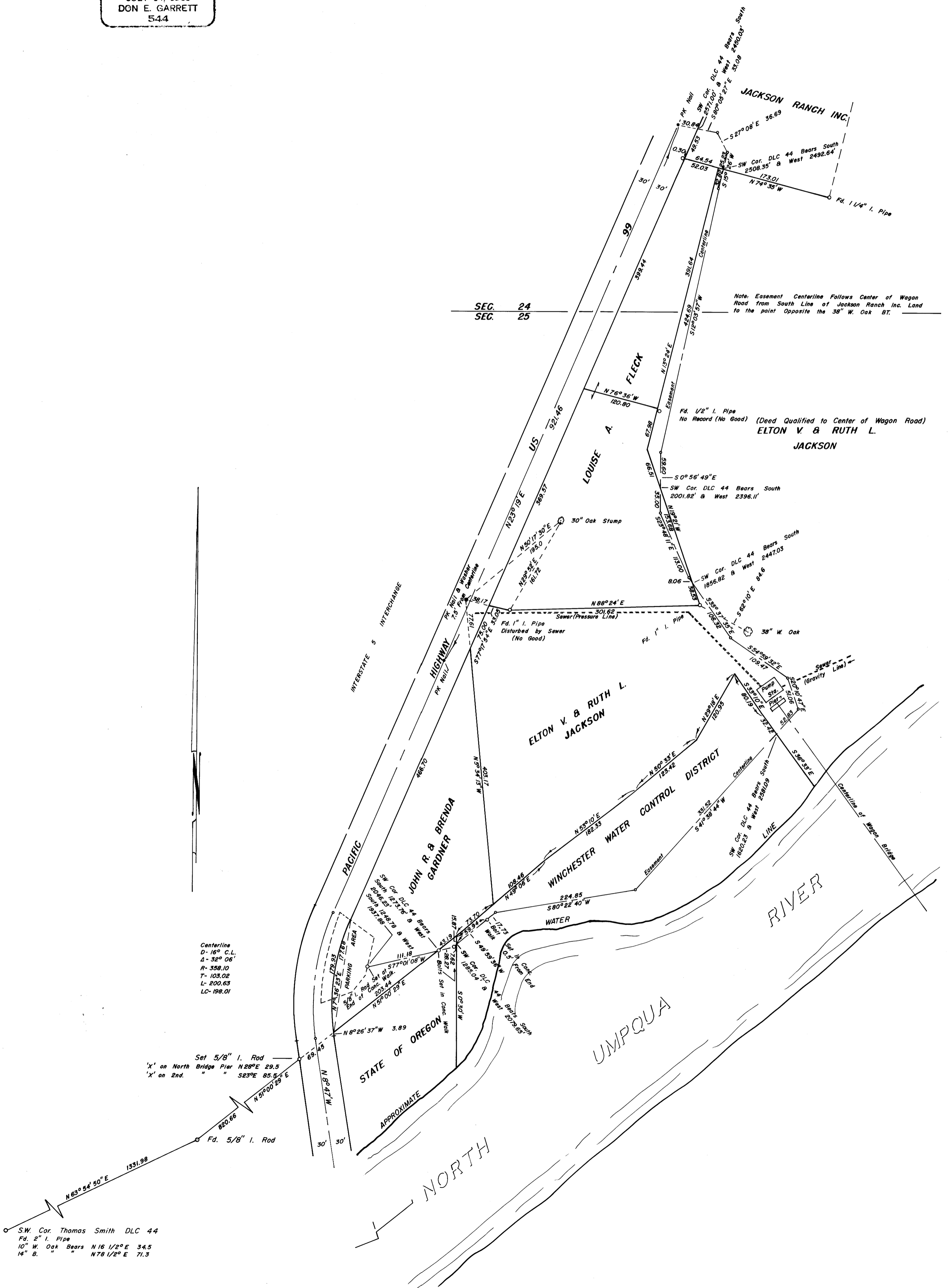
COUNTY SURVEYOR
DOUGLAS COUNTY, ORE.

JOINT SURVEYORS FILE DATA
DO NOT REMOVE FROM OFFICE

REGISTERED
OREGON
LAND SURVEYOR

Don E. Garrett

JULY 14, 1961
DON E. GARRETT
544



Centerline
D- 16° C.L.
Δ- 32° 06'
R- 358.10
T- 103.02
L- 200.63
LC- 198.01

Set 5/8" I. Rod
'x' on North Bridge Pier N 26° E 29.5
'x' on 2nd. " S 23° E 85.5 E

S.W. Cor. Thomas Smith DLC 44
Fd. 2" I. Pipe
10" W. Oak Bears N 16 1/2° E 34.5
14" B. " " N 78 1/2° E 71.3