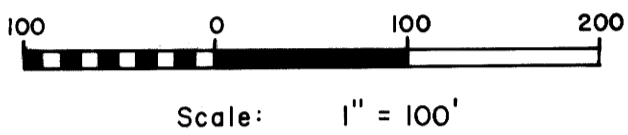
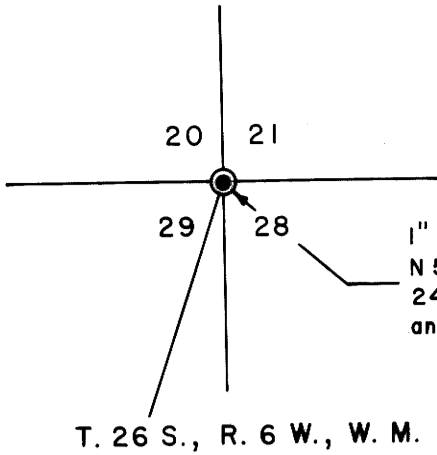


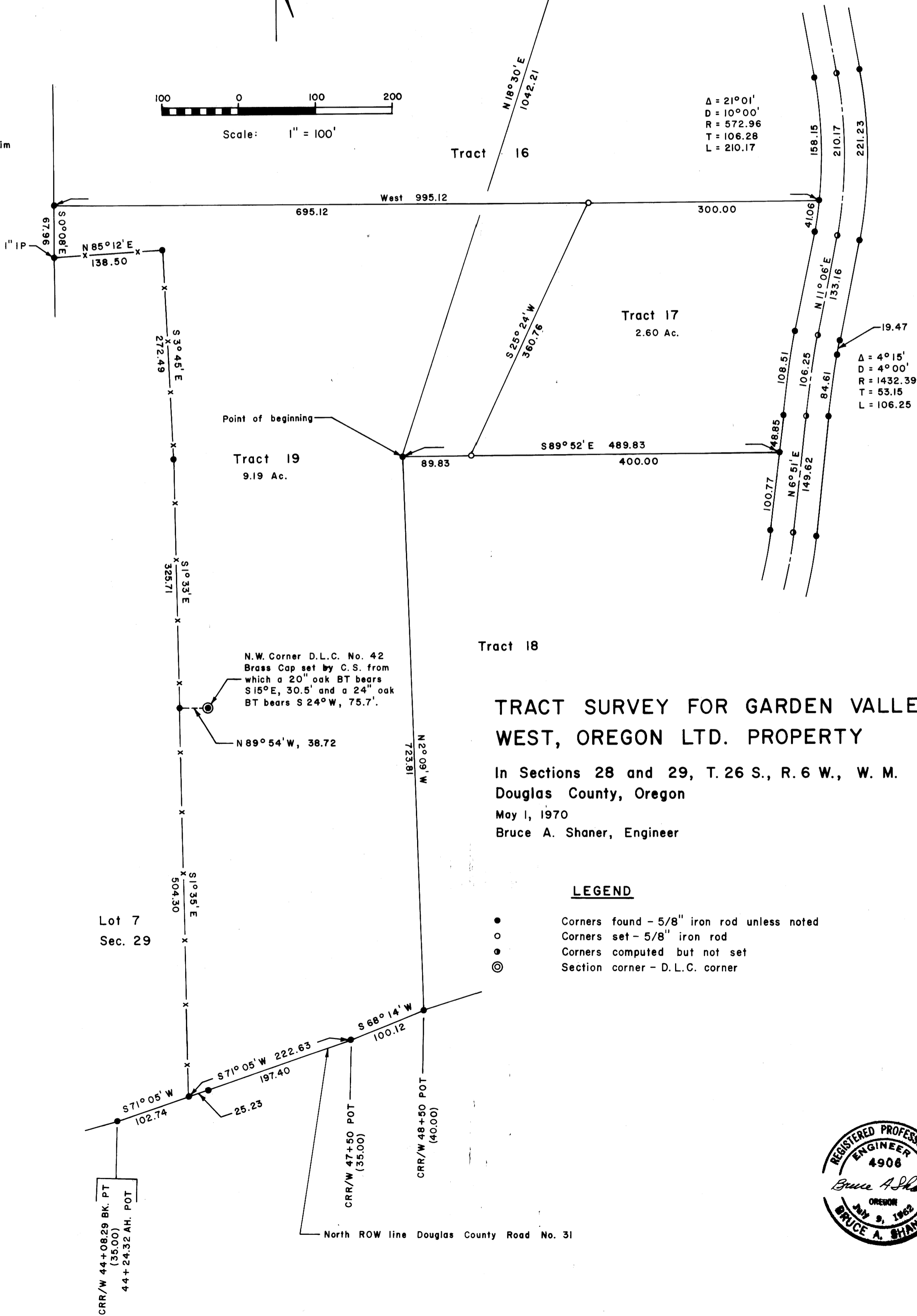
COUNTY SURVEYORS FILE DATA
DO NOT REMOVE FROM OFFICE

MAY 1 1970

COUNTY SURVEYOR
DOUGLAS COUNTY, OREGON



Donation Land Claim
No. 40



TRACT SURVEY FOR GARDEN VALLEY WEST, OREGON LTD. PROPERTY

In Sections 28 and 29, T. 26 S., R. 6 W., W. M.
Douglas County, Oregon

May 1, 1970
Bruce A. Shaner, Engineer

LEGEND

- Corners found - 5/8" iron rod unless noted
- Corners set - 5/8" iron rod
- ⊙ Corners computed but not set
- ⊙ Section corner - D.L.C. corner

