

COUNTY SURVEYORS FILE DATA  
DO NOT REMOVE FROM OFFICE

SURVEY FOR DEED DESCRIPTION  
IN SEC. 3, T26S, R7W. W.M.  
DOUGLAS COUNTY, ORE.

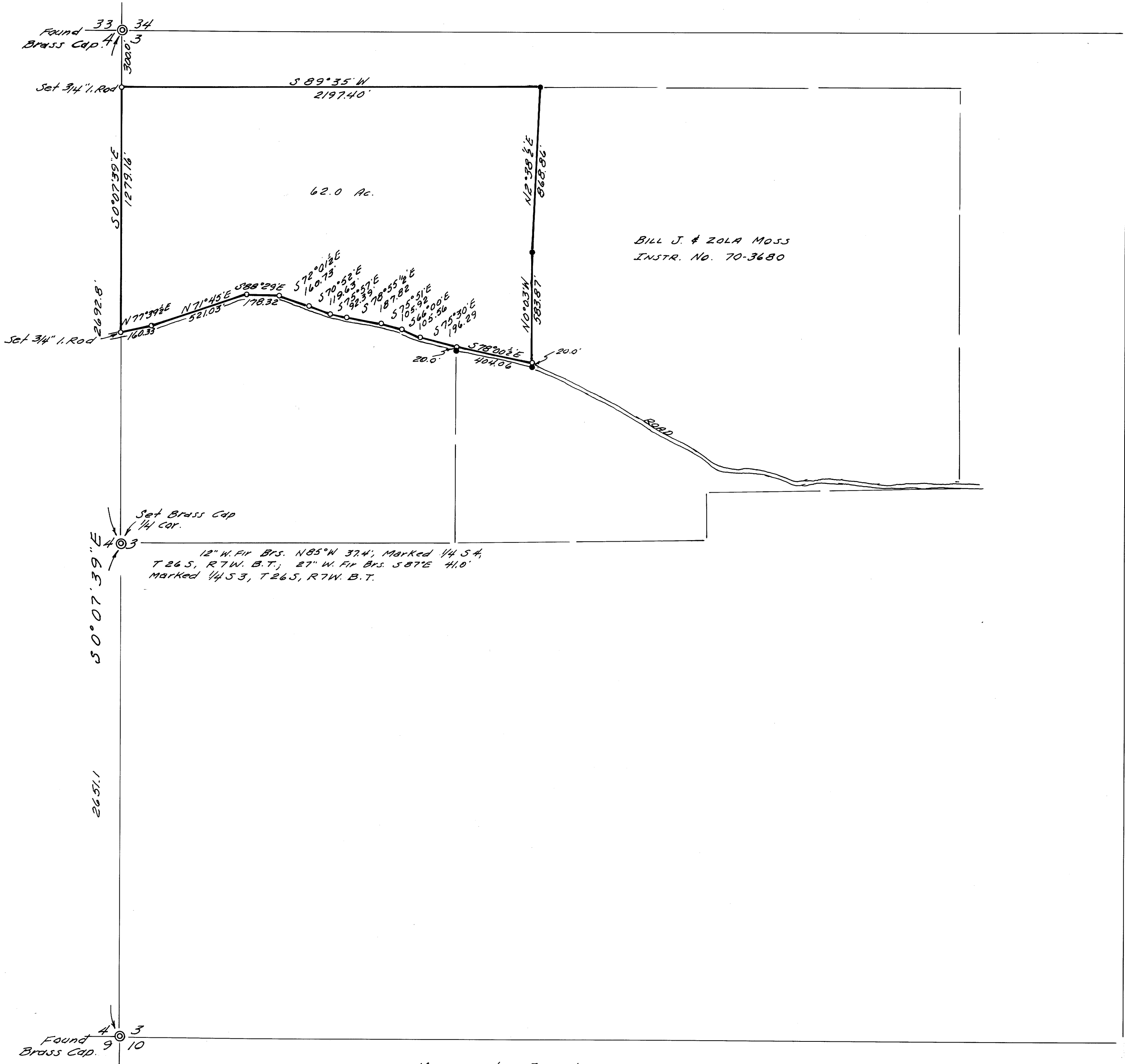
SURVEYED FOR - JOHN THOMAS  
SURVEYED BY - W.S. BARNES

APR. 1970  
SCALE 1" = 400'

FILED  
RECEIVED

MAY 8 1970

COUNTY SURVEYOR  
DOUGLAS COUNTY, ORE.



- Monuments Found.
  - 5/8" iron rods set, except as noted.
- Base bearing taken from BILL MOSS'S west line.  
Reference - M 39-29

