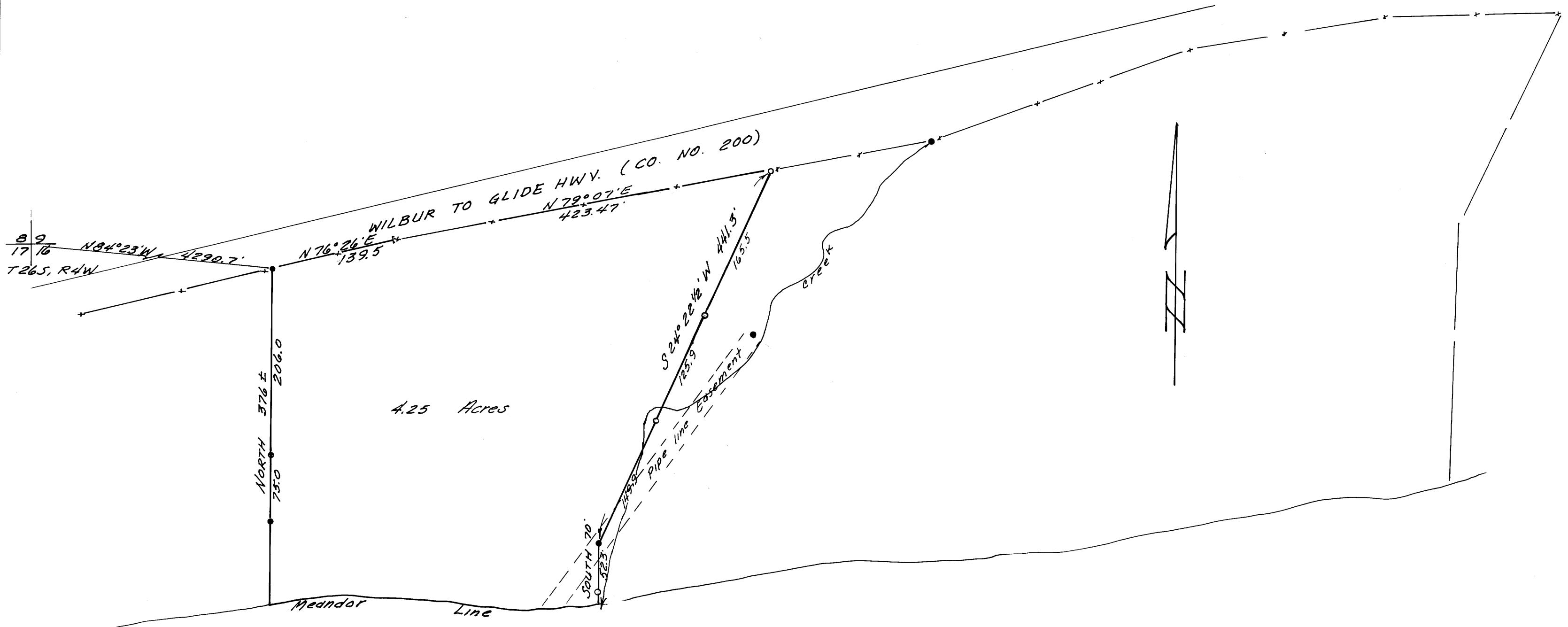


COUNTY SURVEYORS FILE
DO NOT REMOVE FROM OFFICE

SURVEY FOR DEED DESCRIPTION
IN SEC. 16, T26S, R4W. W.M.
DOUGLAS COUNTY, ORE.

SURVEYED FOR- PETE SERAFIN REALTY APR. 1970
SURVEYED BY- W.S. BARNES SCALE 1"=100'

ll



4.25 Acres

← NORTH UMPQUA RIVER

- Monuments found.
 - 3/4" iron rods set.
- Base bearing taken from West property line.
Refr- R.M. 1-59



M 39-62

M 39-62