

SURVEY IN SECTION 32, T26S, R3W, W.M.

SURVEYED FOR R.A. STANDLEY
SURVEYED BY DON E. GARRETT
JANUARY, 1970 SCALE: 1"=100'
• - DENOTES SET 5/8" IRON ROD

REGISTERED
OREGON
LAND SURVEYOR

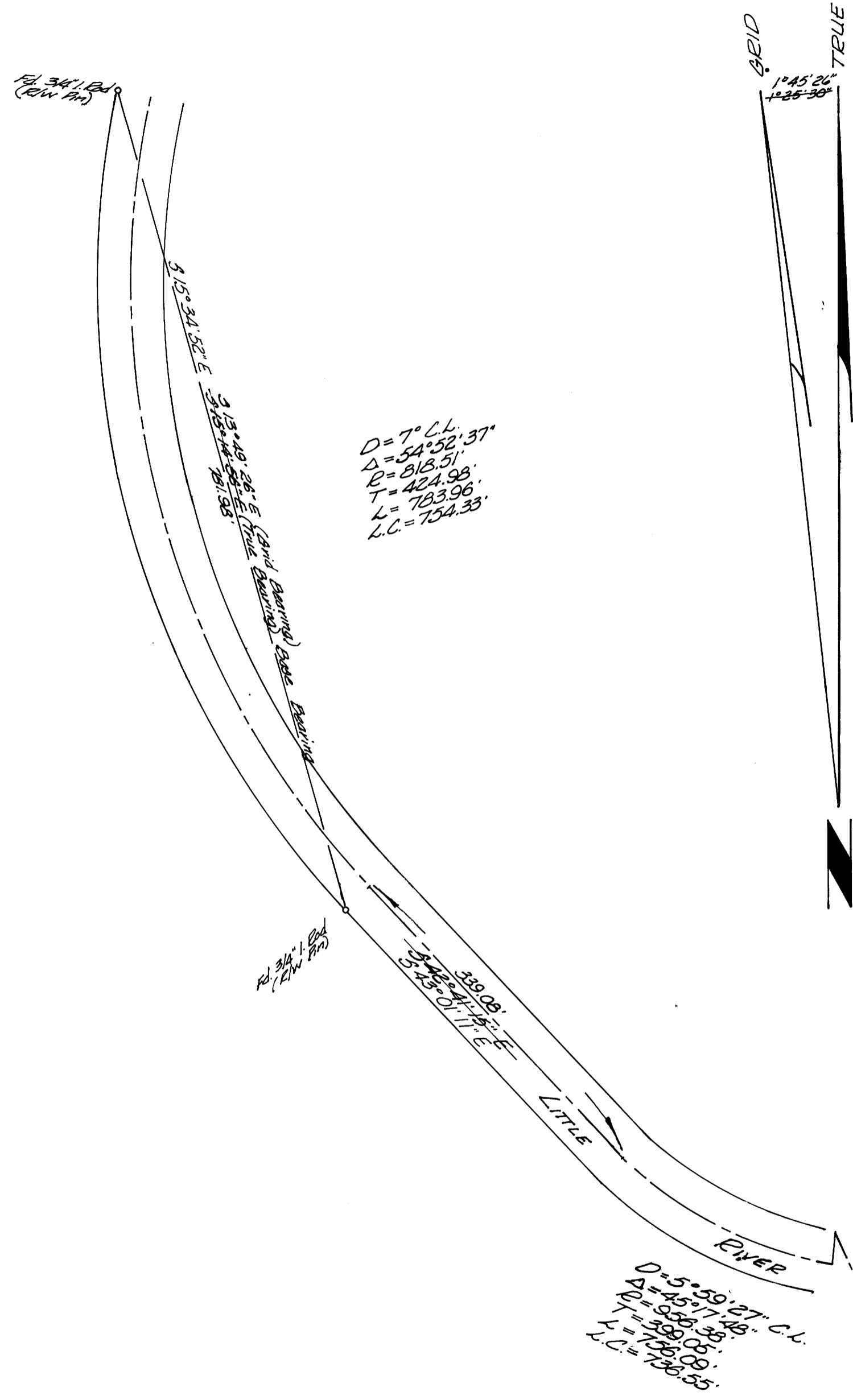
Don E. Garrett

JULY 14, 1961
DON E. GARRETT,
544

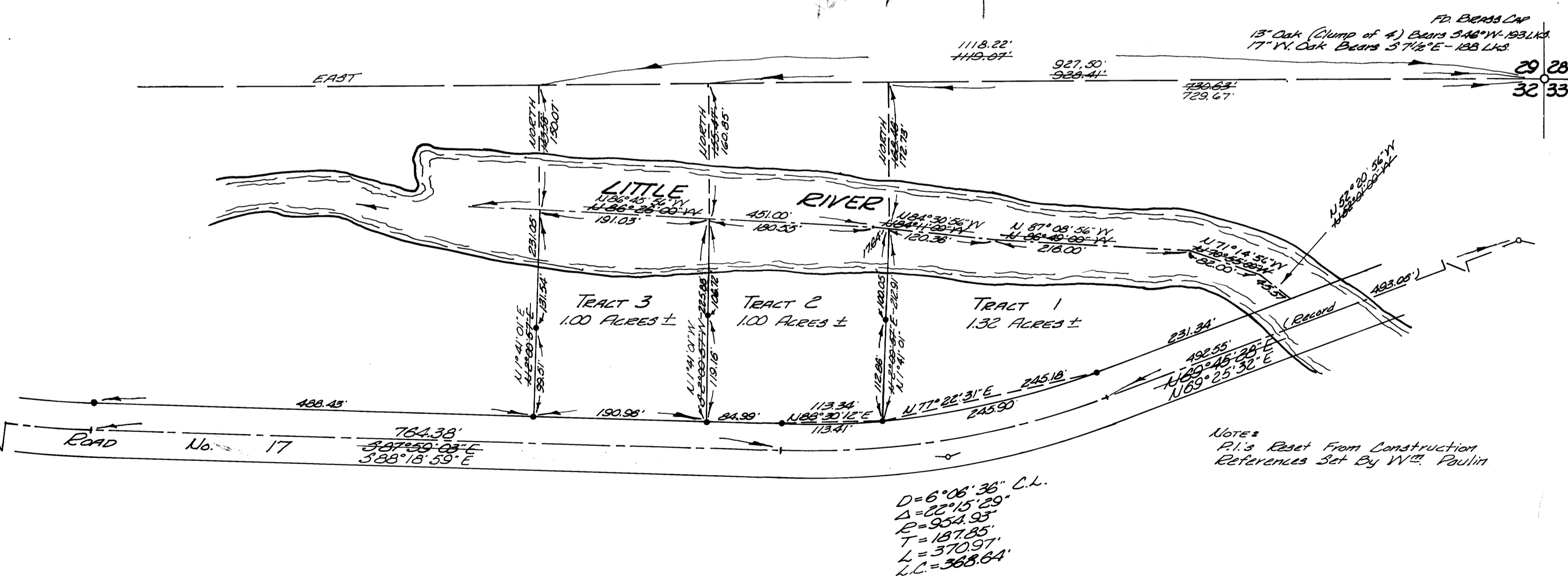
$D = 7^{\circ} 11'$
 $\Delta = 54^{\circ} 52' 37''$
 $R = 318.51'$
 $T = 424.98'$
 $L = 783.96'$
 $L.C. = 754.33'$

NOTES: Bearings shown on this plat were changed February 18, 1970
Due to error between Grid North and True North.

OLD
SEE SURVEY M 39-73



$D = 5^{\circ} 59' 27''$ C.L.
 $\Delta = 45^{\circ} 17' 46''$
 $R = 588.08'$
 $T = 108.08'$
 $L = 126.35'$



$D = 6^{\circ} 06' 36''$ C.L.
 $\Delta = 22^{\circ} 15' 29''$
 $R = 954.95'$
 $T = 187.85'$
 $L = 370.97'$
 $L.C. = 368.64'$

Notes:
P.I.'s Reset From Construction
References Set By W.D. Paulin