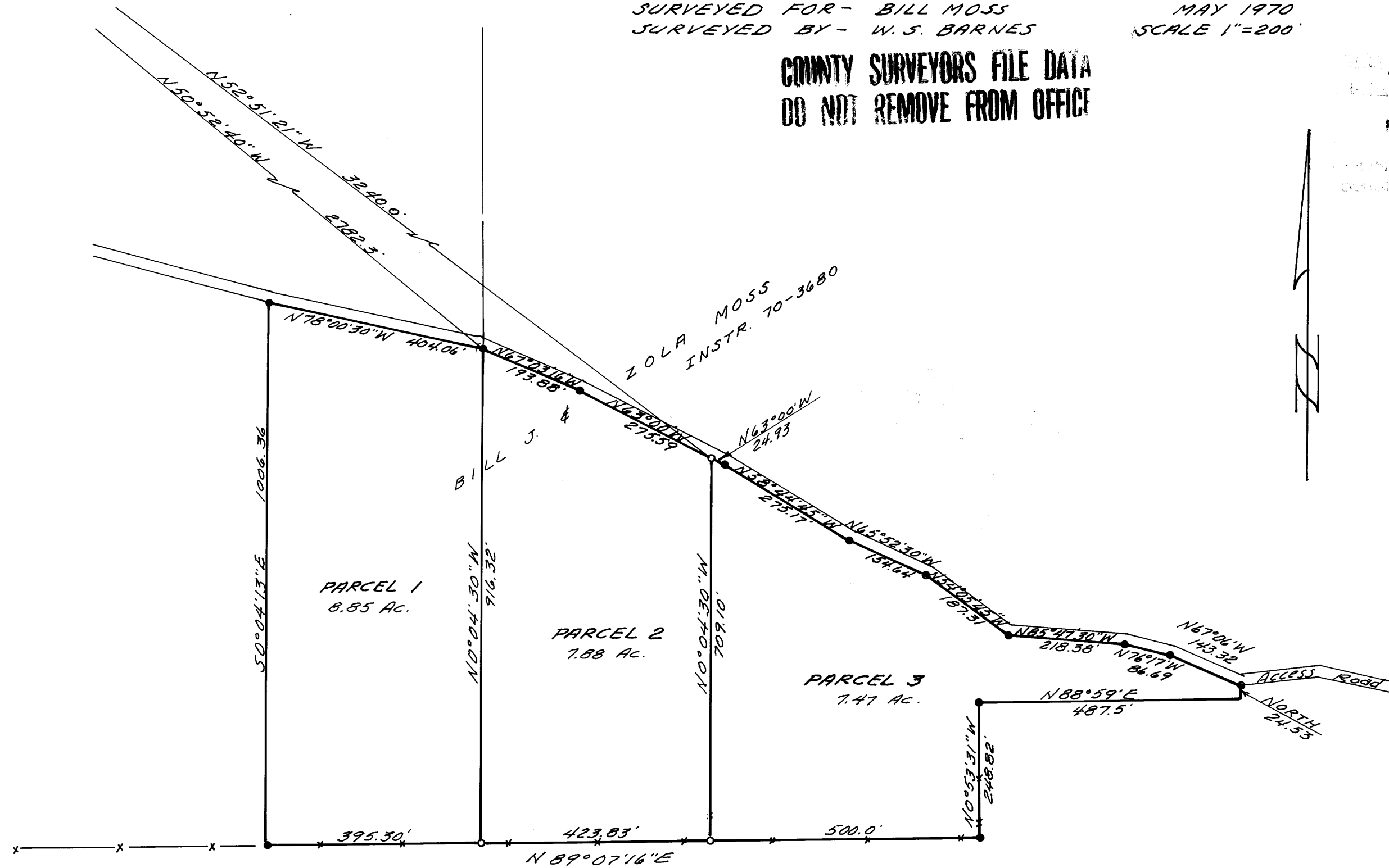


T25S, R7W 33 34
 T26S, R7W 4 3

SURVEY FOR DEED DESCRIPTIONS
 IN SEC. 3, T26S, R7W, W.M.
 DOUGLAS COUNTY, ORE.
 SURVEYED FOR - BILL MOSS
 SURVEYED BY - W.S. BARNES
 MAY 1970
 SCALE 1"=200'

COUNTY SURVEYORS FILE DATA
 DO NOT REMOVE FROM OFFICE

REC'D
 L.P.
 MAY 5 1970
 COUNTY SURVEYORS
 DOUGLAS COUNTY, ORE.



- 5/8" iron rods found
 - " " " set.
- Base bearing taken from C.S. File -
 Refr. -



M39 + 58

M39 + 58