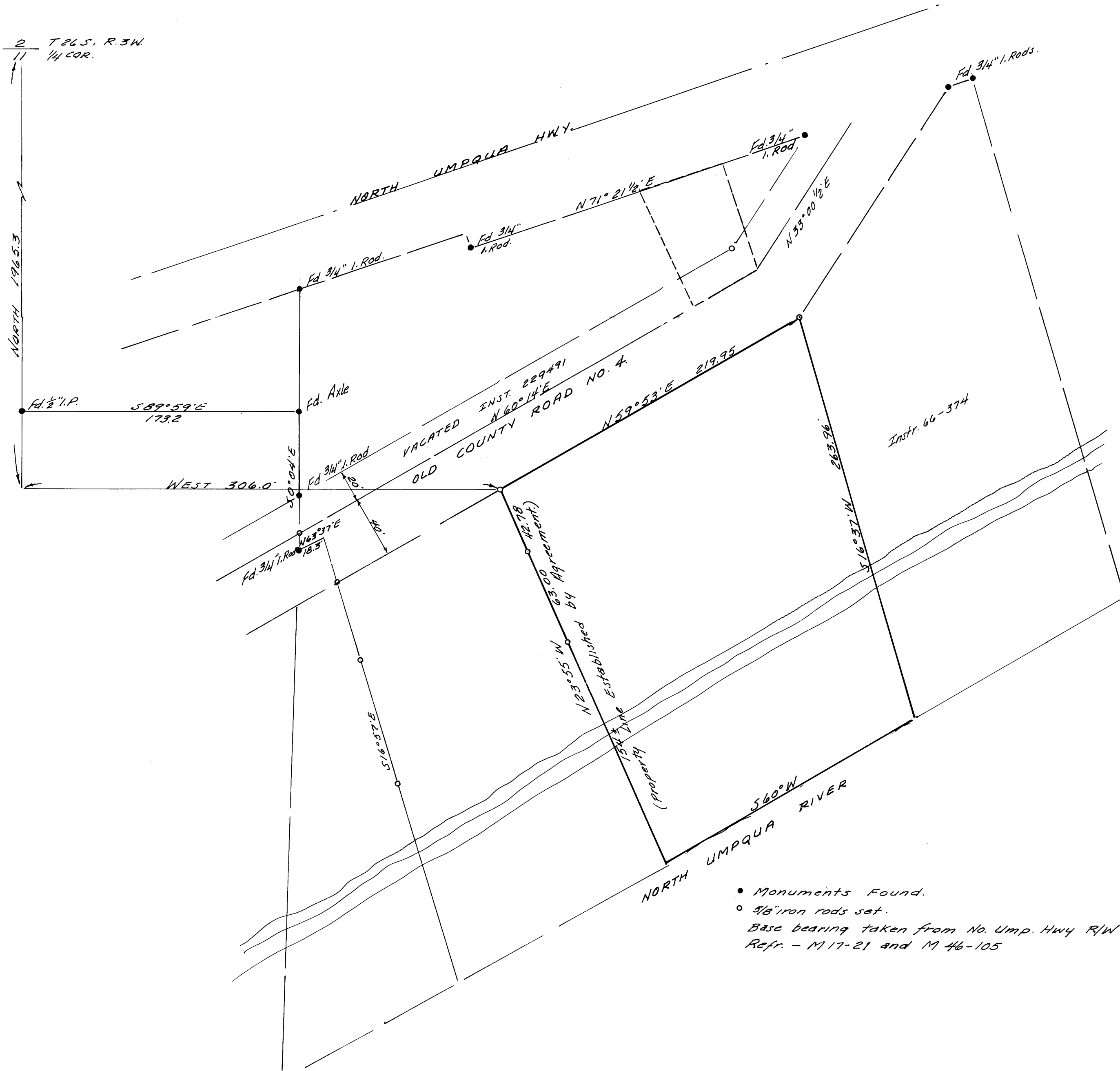


COUNTY SURVEYORS FILE DATA
DO NOT REMOVE FROM OFFICE

SURVEY IN SEC. 11, T26 S, R3 W. W.M.
DOUGLAS COUNTY, ORE.
SURVEYED FOR - FORREST LOSEE
SURVEYED BY - W.S. BARNES
APR. 1970
SCALE 1" = 50'

LL

2 T26 S, R3 W.
11 1/4 COR.



- Monuments Found.
- 5/8" iron rods set.
- Base bearing taken from No. Ump. Hwy R/W line.
- Refr. - M17-21 and M46-105

