

SE 1/4 NW 1/4 SECT. 13, T 22 S., R 6 W W.M.

THOMAS E. PLUMB

DRAIN OREG.

Scale: 1" = 50'

April 1970

PLUMB

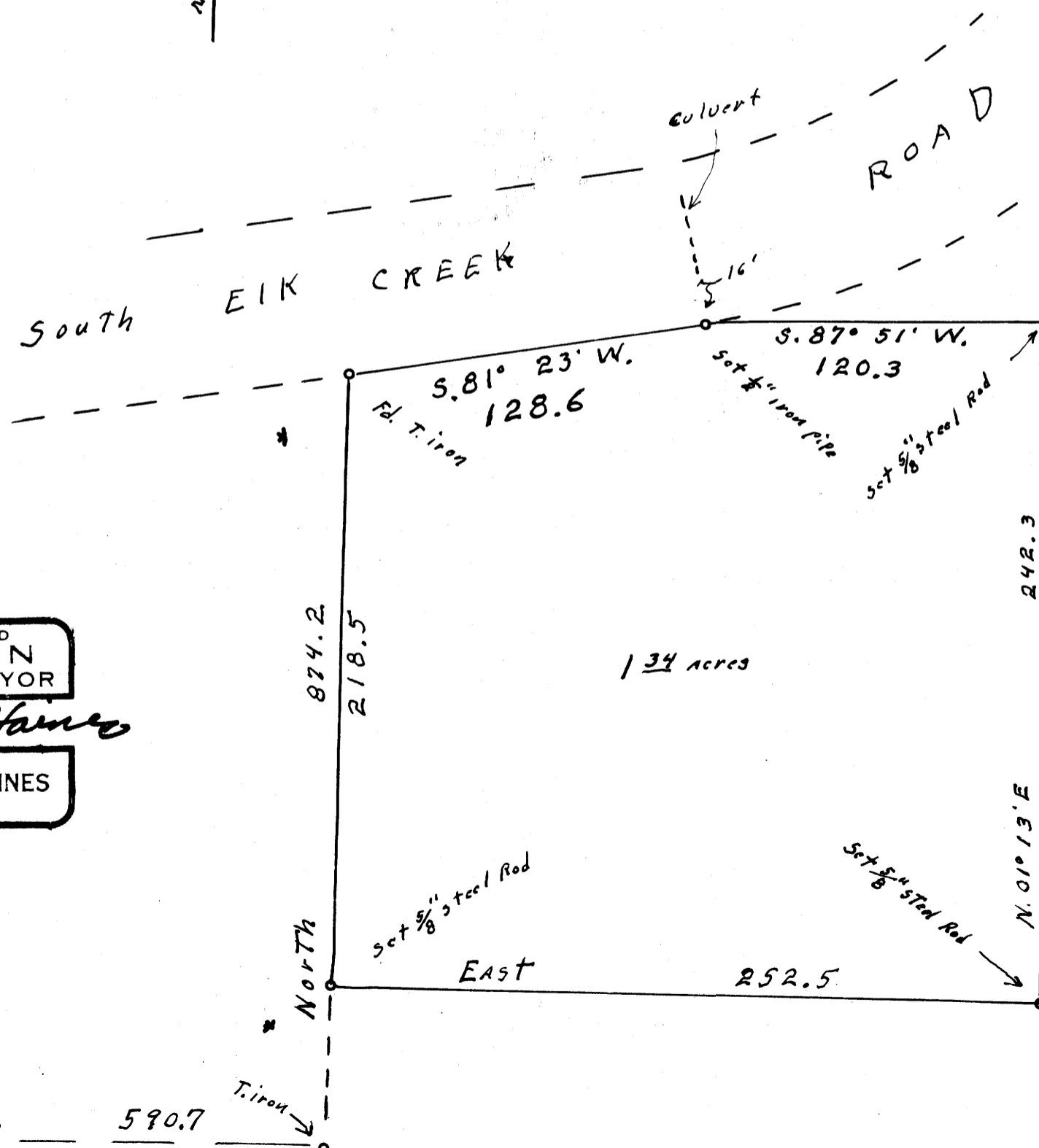
FILED
RECEIVED

APR 30 1970

COUNTY SURVEYOR
DOUGLAS COUNTY, ORE

North ↑

* Record bearing used



REGISTERED
OREGON
LAND SURVEYOR

Wilford N. Haines

MAY 7, 1948
WILFORD N. HAINES
239

SU Corner
SE 1/4 NW 1/4
Sect. 13
T. 22 S., R. 6 W. W.M.

N. 89° 39' E.

590.7

North ↑
T. iron

MAP FILE M39-54

MAP FILE M 39-54