

COUNTY SURVEYORS FILE  
DO NOT REMOVE FROM OFFICE

FILED  
RECEIVED

APR 30 1970

COUNTY SURVEYOR  
DOUGLAS COUNTY, ORE.

E 1/2 Line Sect. 34, T22S., & Sect. 3 T.23S., R.4.W. W.M.

JIM WEIST

YONCALLA, ORE.

APRIL 24, 1970

REGISTERED  
OREGON  
LAND SURVEYOR

*Wilford N. Haines*

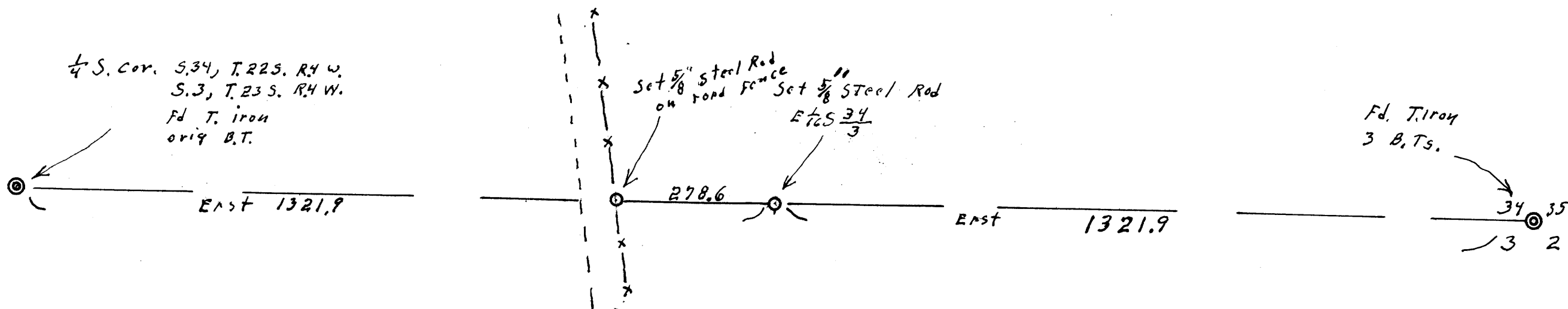
MAY 7, 1948  
WILFORD N. HAINES  
239

North  
Based on East  
for the Sect. Line

Scale 1" = 200'

⊙ Monuments Found

○ Set 5/8" steel Rod this survey  
"Rebar"



MAD FILE M39-53

M39-53