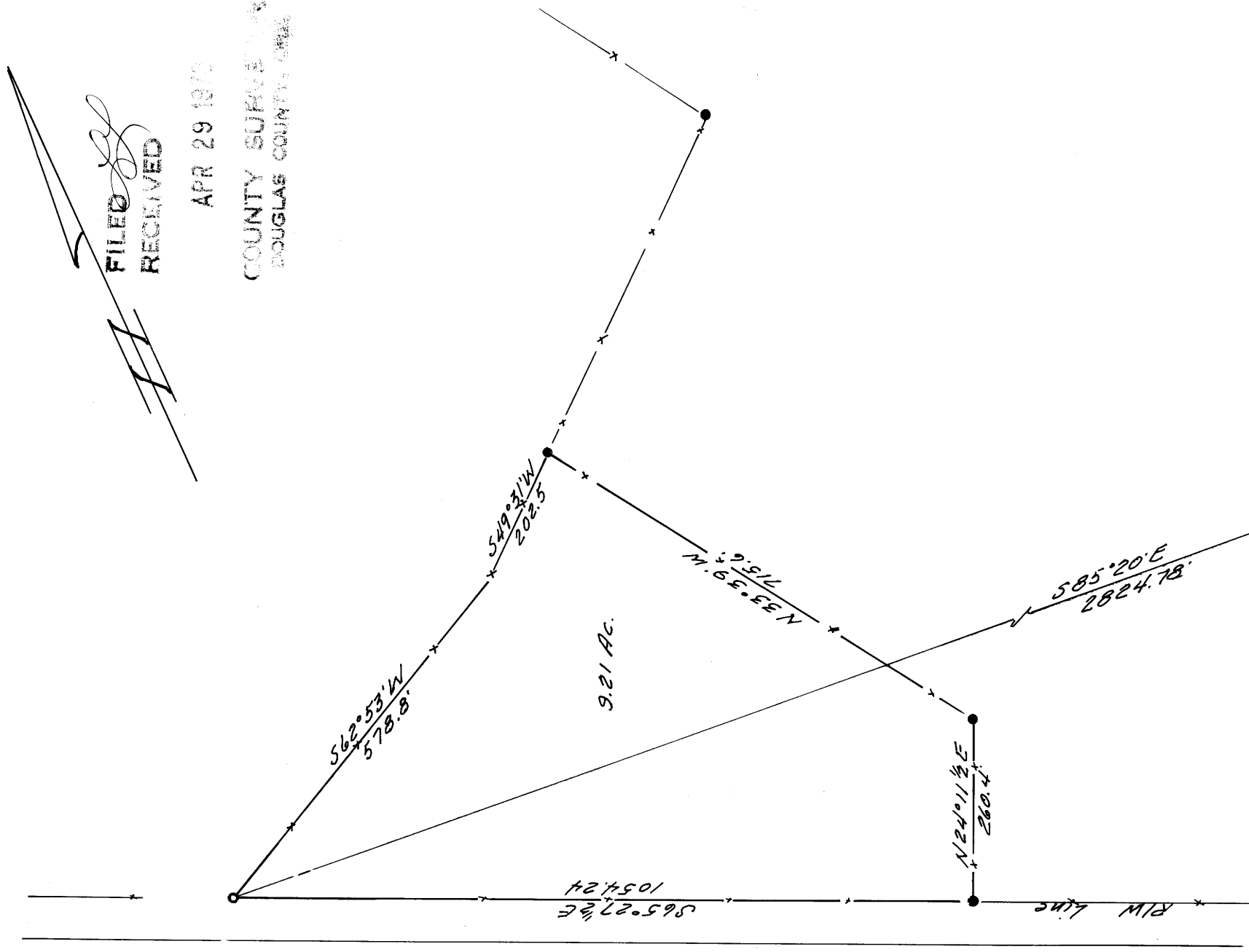


**SURVEY FOR DEED DESCRIPTION  
IN SECTIONS 8 and 17, T26 S, R4W. W.M.  
DOUGLAS COUNTY, ORE.**

SURVEYED FOR - JIM BEVANS  
SURVEYED BY - W.S. BARNES

APR. 1970  
SCALE 1"=200'

**COUNTY SURVEYORS FILE DATA  
DO NOT REMOVE FROM OFFICE**



FILED  
RECEIVED

APR 29 1970

COUNTY SURVEYOR  
DOUGLAS COUNTY, ORE.

- 3/4" iron rods found.
  - 3/4" iron rods set.
- Base bearing taken from M33-39 survey.

