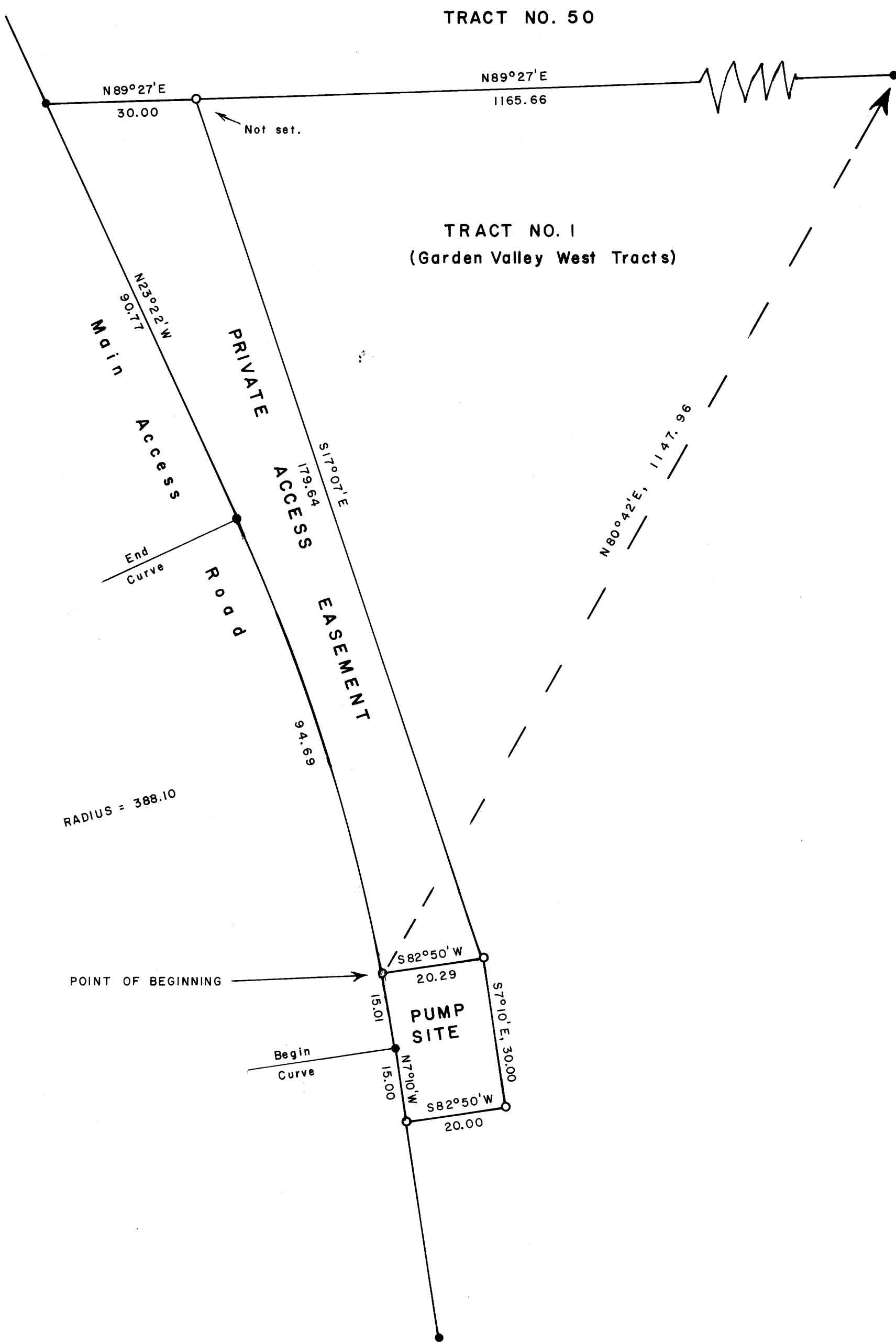


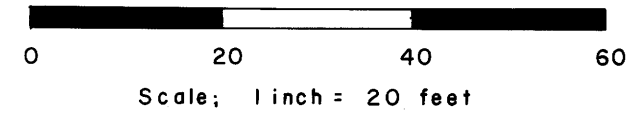
FILED
RECEIVED

JAN 27 1970

COUNTY SURVEYOR
DOUGLAS COUNTY, ORE.



1/4 Section Corner
Sections 21 & 28, T26S, R6W, W.M.
(See C. S. Map File I-68)



- LEGEND
- Corner Found (5/8" iron rods)
 - Corner Set (5/8" iron rod)

COUNTY SURVEYORS FILE DATA
DO NOT REMOVE FROM OFFICE

PUMP SITE SURVEY
for
GARDEN VALLEY WEST, OREGON, LTD.
in NW 1/4, Section 28, T26S, R6W, W.M.

Bruce A. Shaner, Engineer
January 27, 1970