

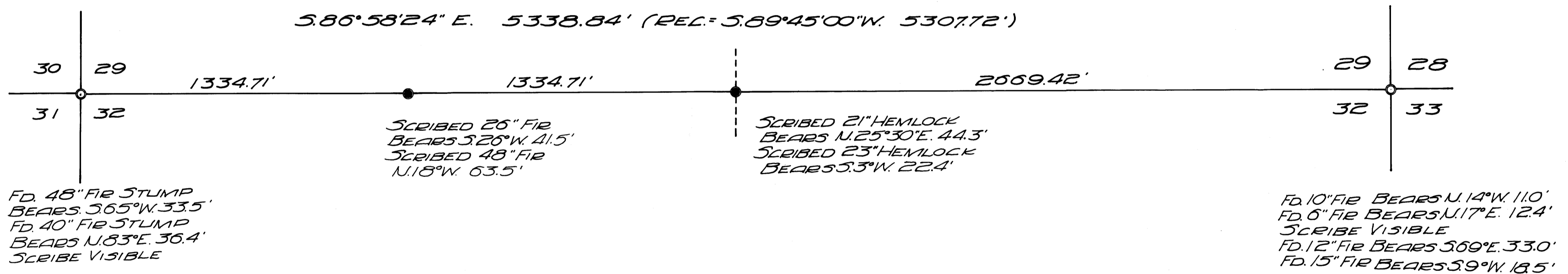
# SURVEYED TO ESTABLISH 1/4 & W. 1/16 CORNERS OF SEC'S. 29 & 32, TWP. 20 S., R. 6.11 W. W.M.

SURVEYED FOR THE Siuslaw NATIONAL FOREST  
SMITH RIVER CADASTRAL CONTRACT NO. 01901  
SURVEYED BY BAUGHMAN & ACKARET INC.  
SCALE 1"=300' APRIL 1970

COUNTY SURVEYORS FILE DATA  
DO NOT REMOVE FROM OFFICE

APR 18 1970

C.S. FILE 55 / 147  
Map File M33-48



I, GLENN S. BAUGHMAN, A REGISTERED LAND SURVEYOR IN THE STATE OF OREGON, HEREBY CERTIFY THAT THIS PLAT & THE NOTES HEREON, OR ATTACHED, ARE A CORRECT REPRESENTATION OF A SURVEY I PERFORMED DURING MARCH & APRIL 1970, FOR THE U.S. FOREST SERVICE, IN ACCORDANCE WITH THE STATUTES OF THE STATE OF OREGON & WITH THE ARTICLES OF MY CONTRACT.

- FD. BEARS CAP
- SET BEARS CAP

REGISTERED  
OREGON  
LAND SURVEYOR

*Glenn S. Baughman*  
JULY 14, 1967  
GLENN S. BAUGHMAN  
536

*Glenn S. Baughman*  
GLENN S. BAUGHMAN  
REGISTERED LAND SURVEYOR  
STATE OF OREGON  
O. L. S. No. 536

M33-48  
55 / 147

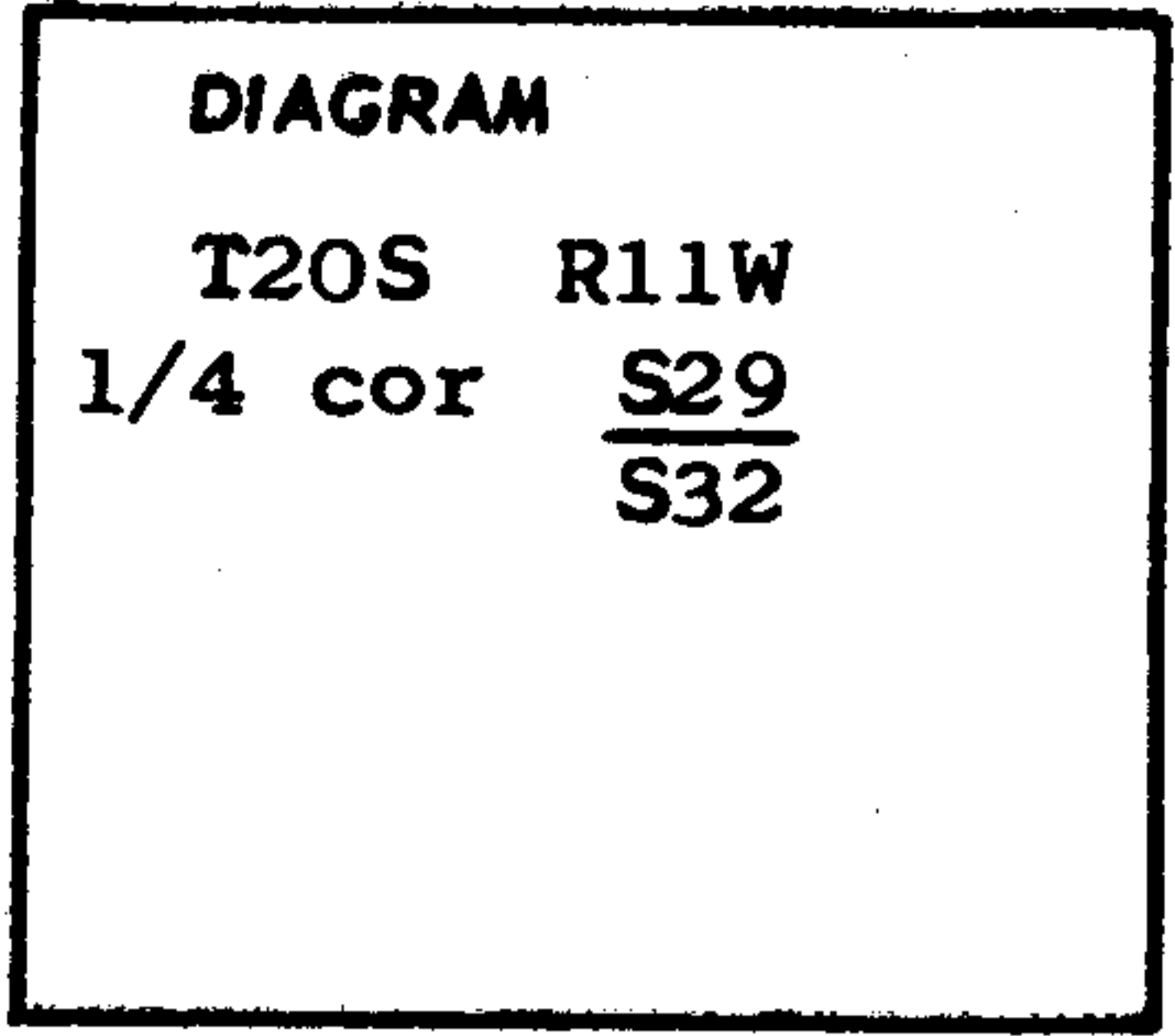
CERTIFIED RECORD OF LAND CORNER MONUMENTATION

History of original corner establishment:

As surveyed by William Thiele

Under Contract # 567, Dated 1891

He states that he erected a mound of stone 1 1/2 ft high, 2 ft base alongside a sandstone 9x8x7 ins, 6 ins. in the ground, marked 1/4 on N face for 1/4 sec cor.



Description of corner evidence found:

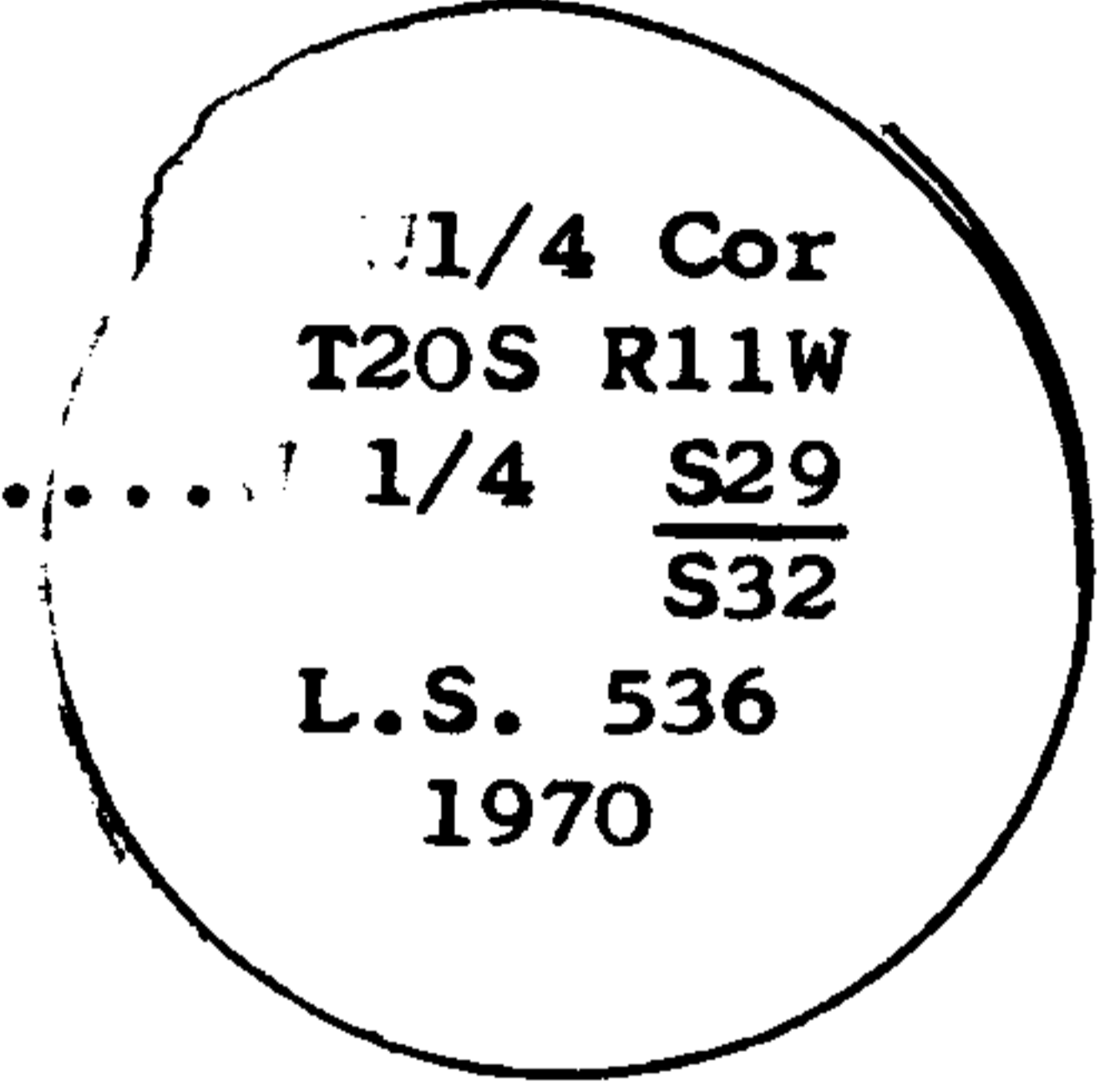
None

Description of monument and accessories I established to perpetuate the original location of this corner

I set a 2" x 30" galvanized iron pipe with a brass cap, 24" in the ground

I stamped the disk .....

From the pipe monument I marked new bearing trees, a 23" hemlock bears S3°W at 22.4 ft. a 21" hemlock bears N25°30' E at 44,3 ft.



REGISTERED  
OREGON  
LAND SURVEYOR

*Glenn S. Baughman*

JULY 14, 1966  
GLENN S. BAUGHMAN  
536

Office of SURVEYOR County of DOUGLAS

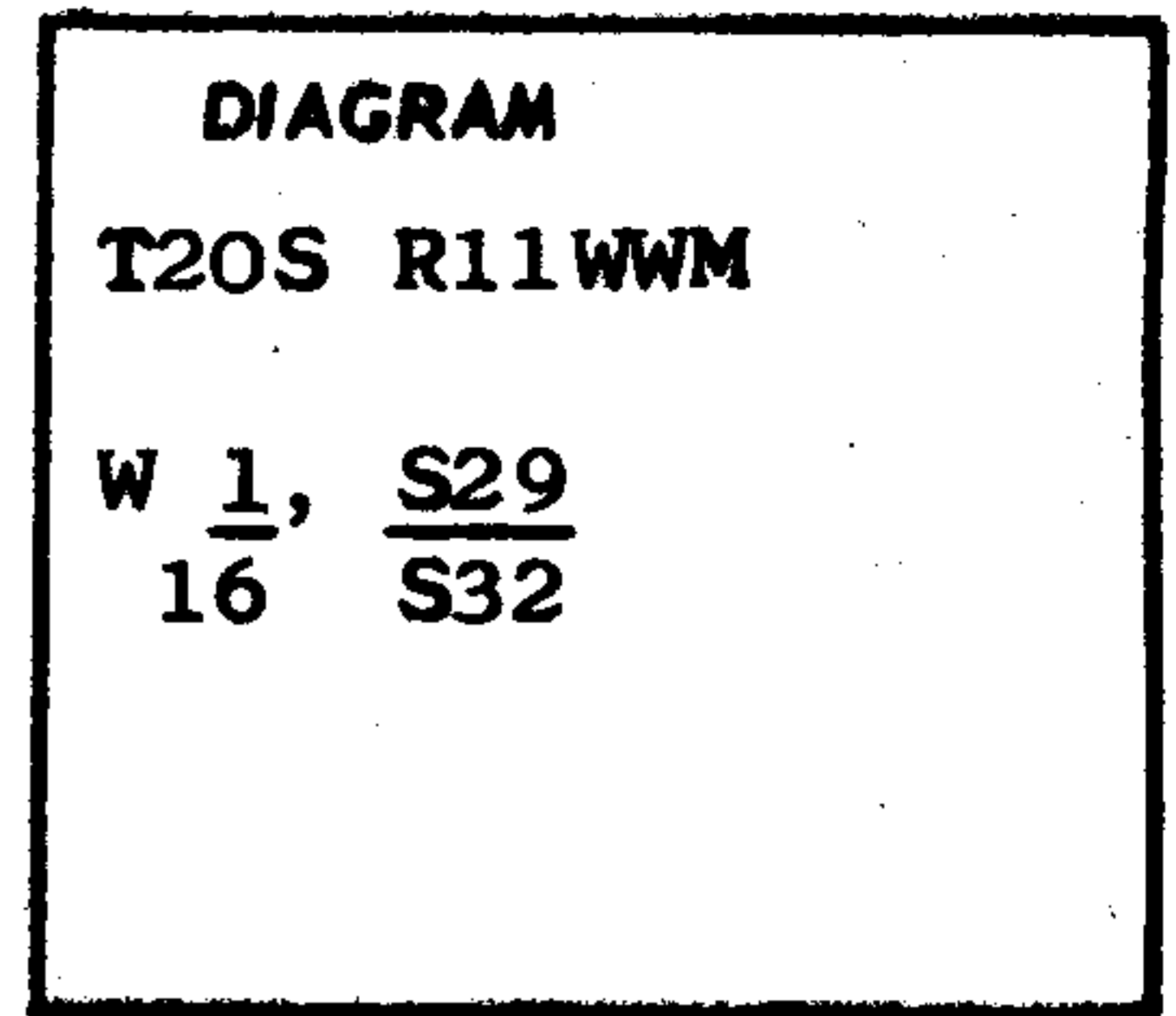
State of Oregon, I hereby certify that the within instrument was filed in this office for record on the 28 day of APRIL, 1970, at 11 o'clock A.m., (signed)

James W. Ryan by .....  
(COUNTY OFFICIAL) (DEPUTY)

CERTIFIED RECORD OF LAND CORNER MONUMENTATION

History of original corner establishment:

No Record



Description of corner evidence found:

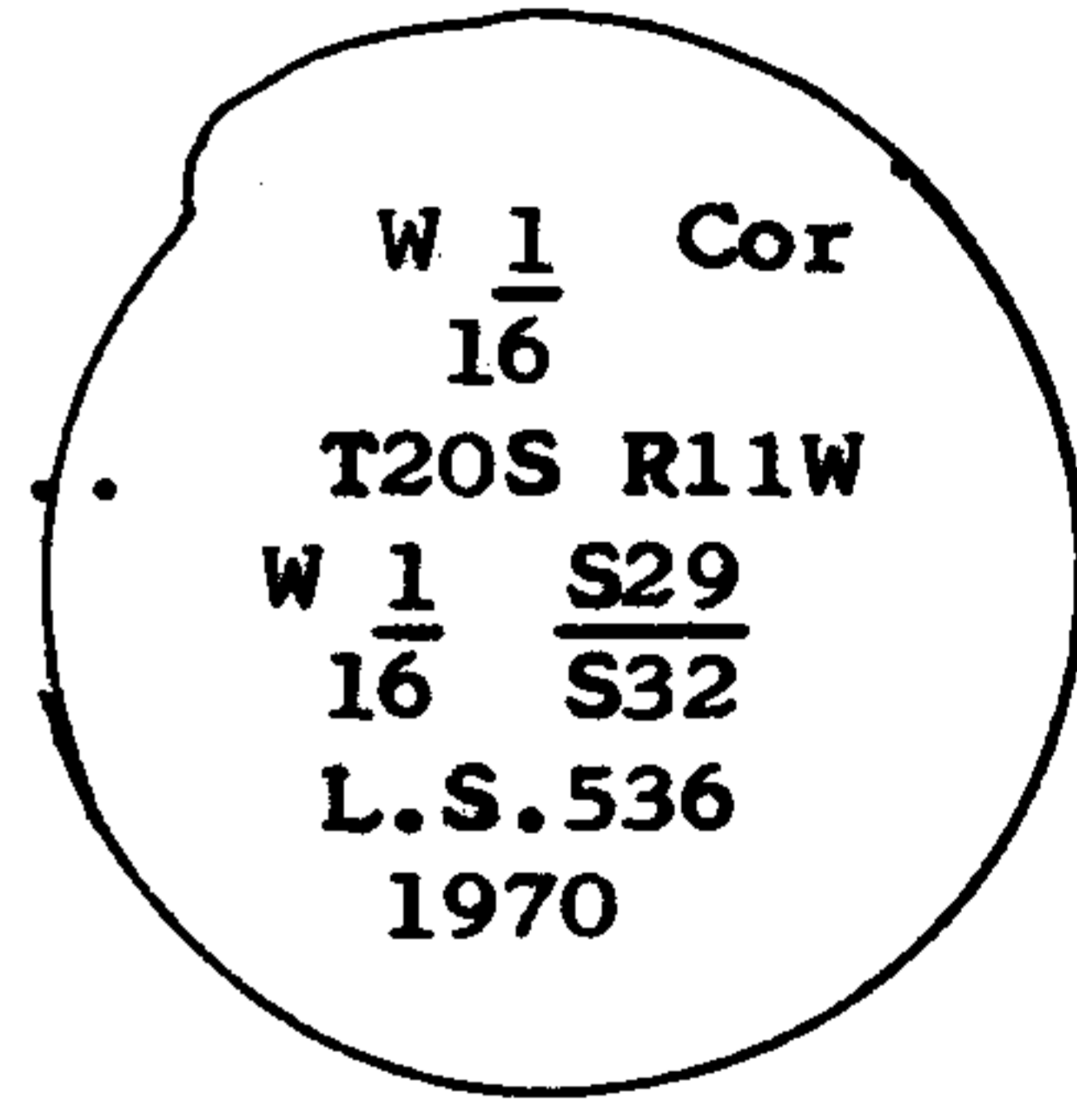
None

Description of monument and accessories I established to perpetuate the original location of this corner

I set a 2" x 30" galvanized iron pipe with a brass cap, 24" in the ground.

I stamped the disk .....

From the pipe monument I marked new bearing trees,  
a 26" fir bears S26°W at 41.5 ft,  
a 48" fir bears N18°W at 63.5 ft.



REGISTERED  
OREGON  
LAND SURVEYOR

*Glenn S. Baughman*

JULY 14, 1961  
GLENN S. BAUGHMAN  
536

Office of SURVEYOR County of DOUGLAS

State of Oregon, I hereby certify that the within instrument was filed in this office

for record on the 28 day of APRIL, 1970, at 11 o'clock A.m., (signed)

*James W. [Signature]*  
(COUNTY OFFICIAL)

by ..... (DEPUTY)