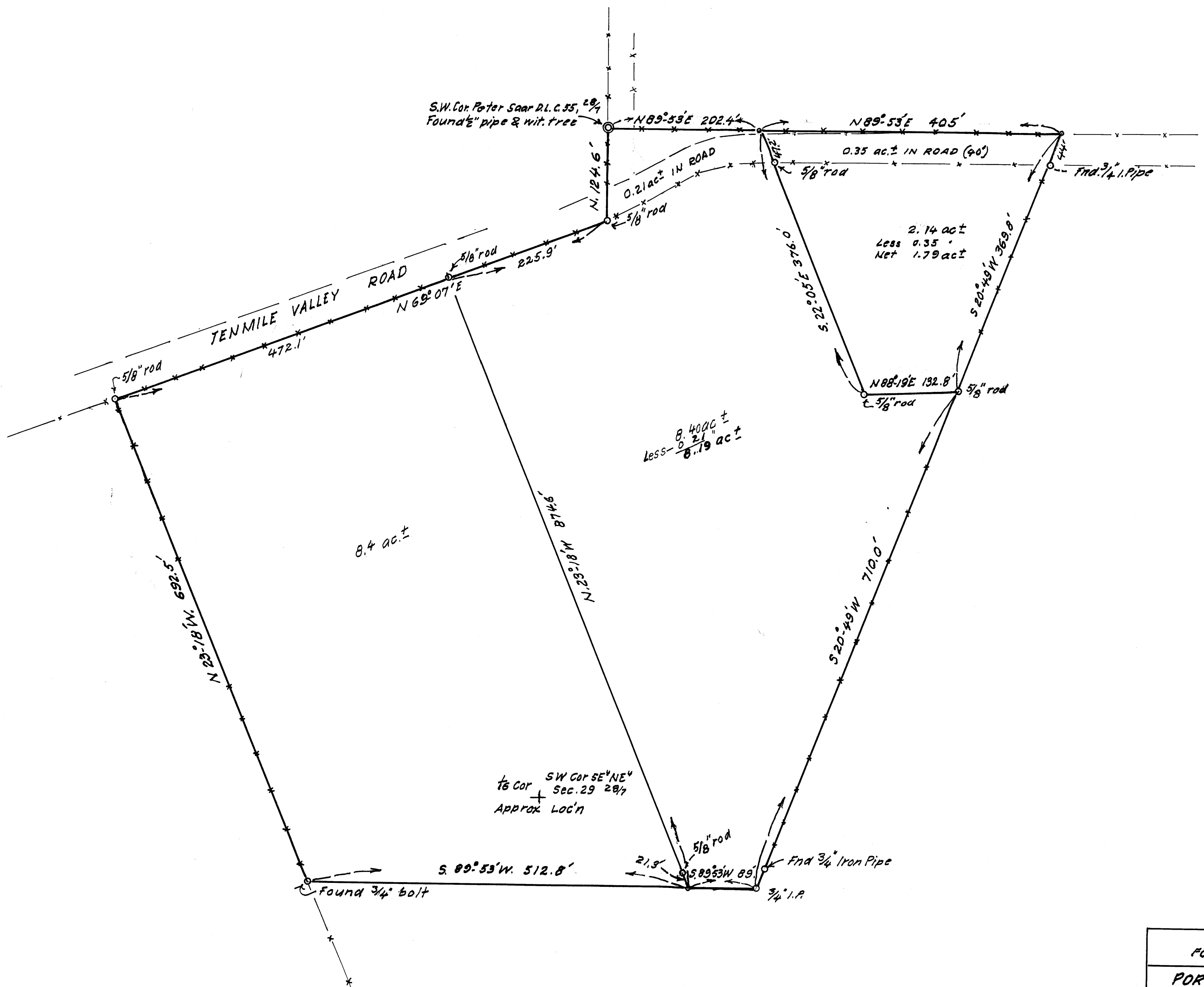


FILED
RECEIVED

APR 9 1970

COUNTY SURVEYOR
DOUGLAS COUNTY, ORE.

M 39 - 44



COUNTY SURVEYORS FILE DATA
DO NOT REMOVE FROM OFFICE

ELTON ZUVER ET AL. FORMERLY J.G. & BLANCHE DICKOVER
PORTION LOT 7, IRWINGTON GARDEN TRACTS IN SEC. 29, T28S, R7W, W.M.; DOUGLAS COUNTY, ORE.
MAR 1970 A.B. 1"=100 FT.

M 39 - 44