

SURVEY FOR DEED DESCRIPTION
IN SE 1/4 OF SECTION 16, T27S, R5W. W.M., IN S. HARKNESS D.L.C. 41.
DOUGLAS COUNTY, OREGON.

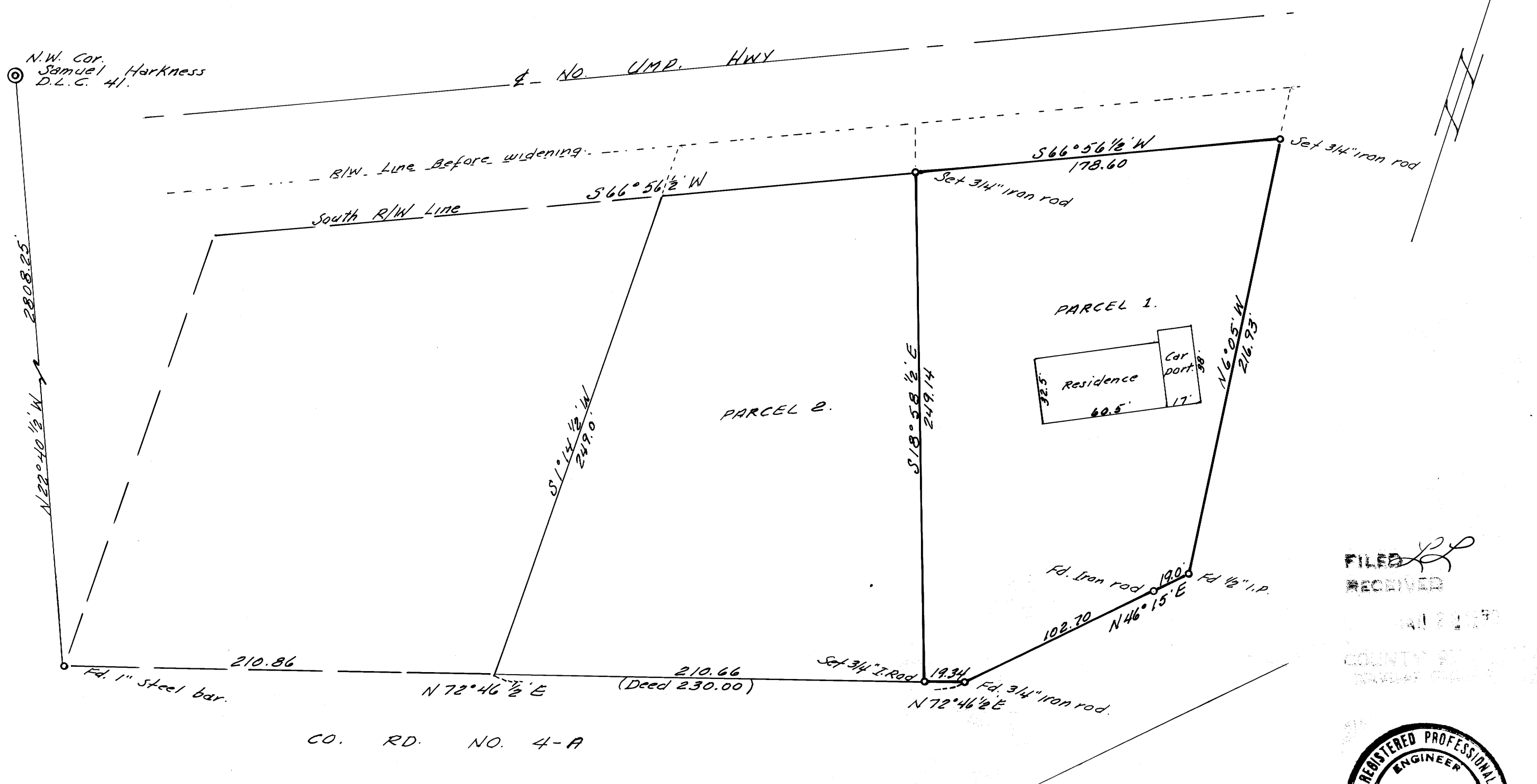
SURVEYED FOR - H.E. KELSO
 SURVEYED BY - W.S. BARNES

COUNTY SURVEYORS FILE DATA
DO NOT REMOVE FROM OFFICE

JAN. 1970
 SCALE 1" = 50'

N.W. Cor.
 Samuel Harkness
 D.L.C. 41.

NO. U.M.P. HWY



FILED
 RECEIVED
 COUNTY OF DOUGLAS
 JAN 21 1970

REGISTERED PROFESSIONAL
 ENGINEER
 2128
W.S. Barnes
 OREGON
 SEPT 5, 1941
 William S. Barnes

M39-4

M39-4