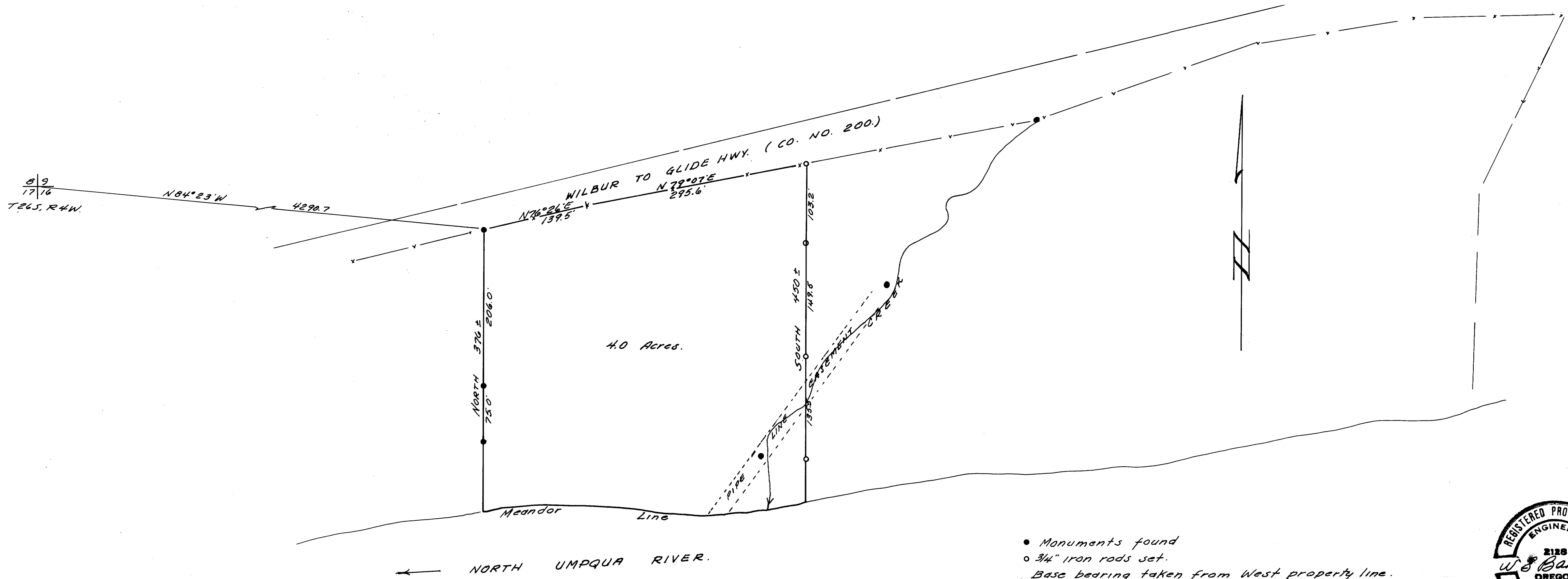


COUNTY SURVEYORS FILE DATA
DO NOT REMOVE FROM OFFICE

SURVEY FOR DEED DESCRIPTION
IN SEC. 16, T26S, R4W, W.M.
DOUGLAS COUNTY, ORE.
SURVEYED FOR - PETE SERAFIN REALTY MAR. 1970
SURVEYED BY - W.S. BARNES SCALE 1"=100'

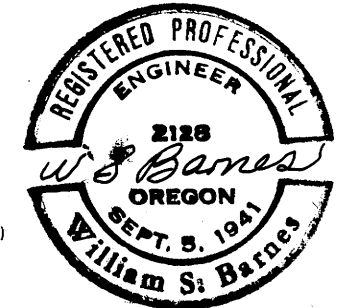
FILED
RECEIVED
MAR 21 1970
COUNTY SURVEYOR
DOUGLAS COUNTY, ORE.



4.0 Acres.

- Monuments found
 - 3/4" iron rods set.
- Base bearing taken from West property line.
Refr. - RM 1-59

SEE SUBSEQUENT SURVEY
M 29-62



M 39 - 35

MAP FILE M 39 - 35