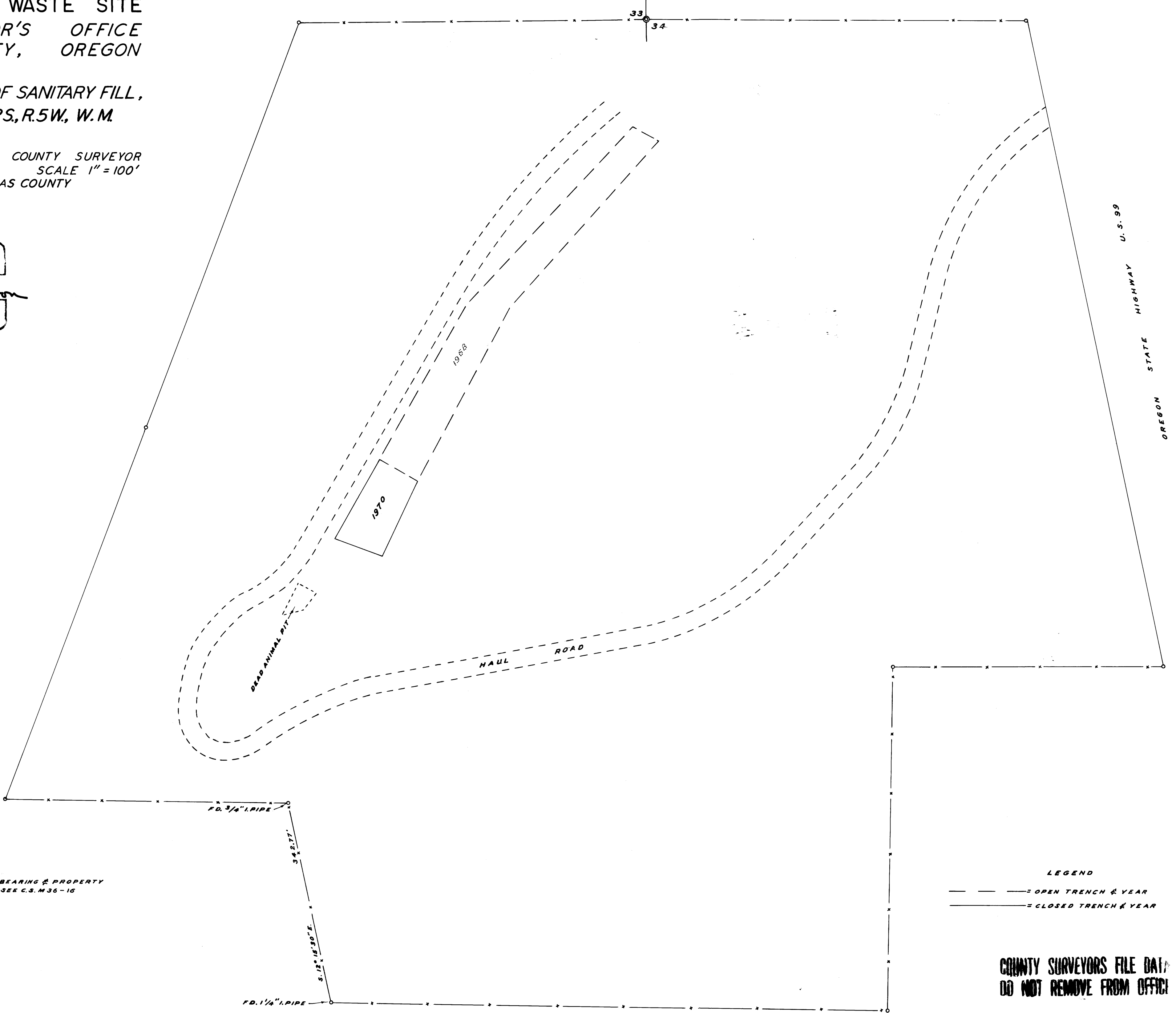
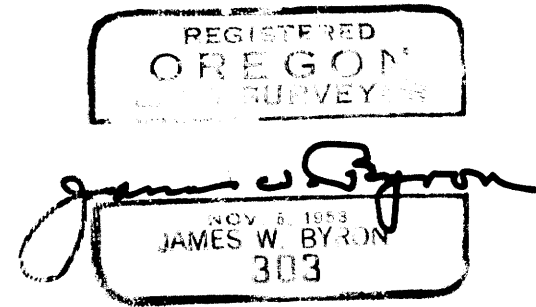


YONCALLA SOLID WASTE SITE  
 COUNTY SURVEYOR'S OFFICE  
 DOUGLAS COUNTY, OREGON

TOPOGRAPHY SURVEY OF SANITARY FILL,  
 SECTION 33 & 34, T.22S., R.5W., W.M.

JAMES W. BYRON COUNTY SURVEYOR  
 SURVEYED MAR. 14, 1970 SCALE 1" = 100'  
 SURVEYED FOR DOUGLAS COUNTY



NOTE:-  
 FOR BASE OF BEARING & PROPERTY  
 LINE SURVEY, SEE C.S. M 36-16

LEGEND  
 - - - - - OPEN TRENCH & YEAR  
 ———— CLOSED TRENCH & YEAR

COUNTY SURVEYORS FILE DAT:  
 DO NOT REMOVE FROM OFFICE

C.S. FILE 54/107  
 M 36-33