

SURVEY TO ESTABLISH PROPERTY CORRS.

IN SECS. 6 & 7 T27S R6W W.M.

SURVEYED FOR JOHN WOLUM

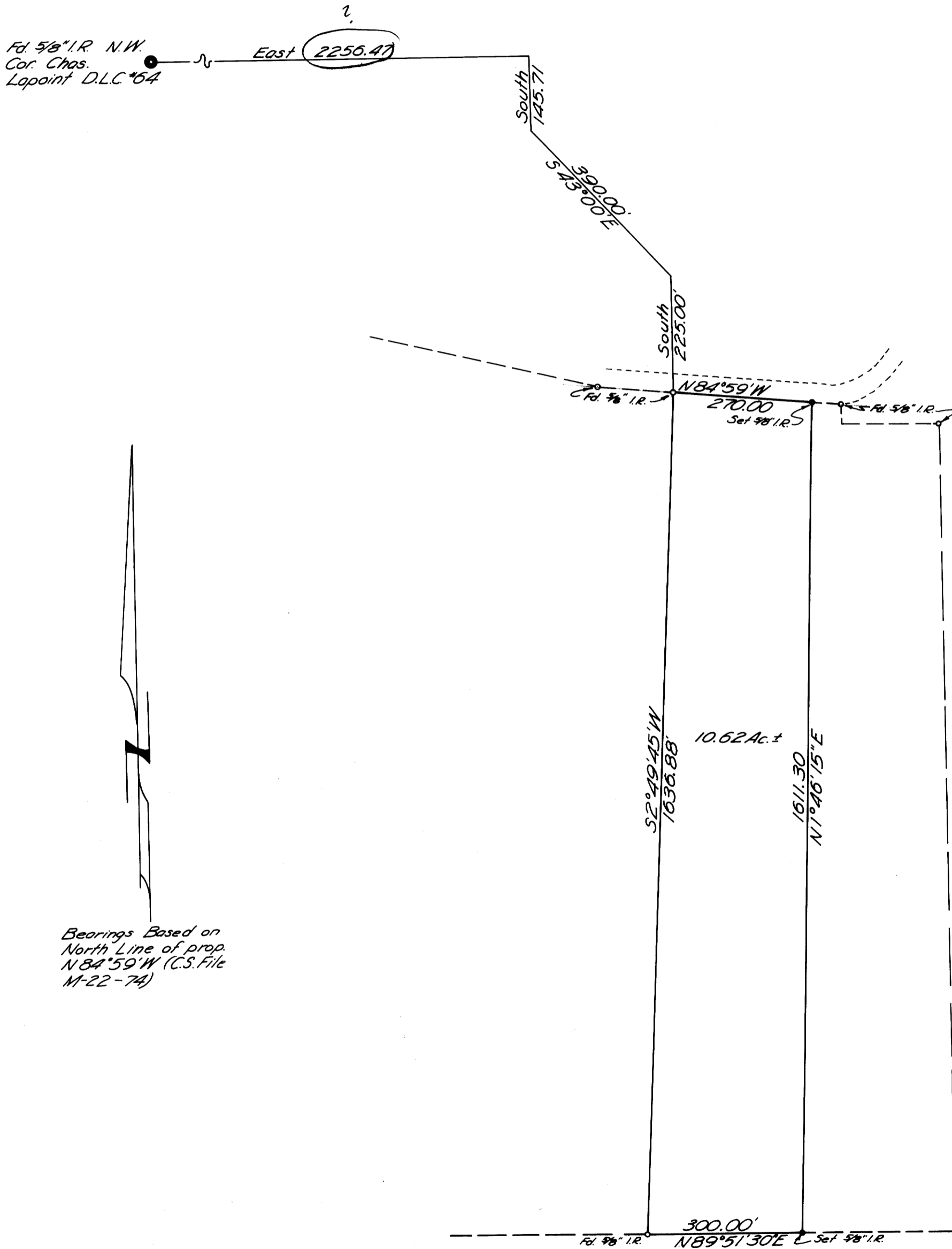
SURVEYED BY H.N. HOOVER FEB. 23, 1970 SCALE 1" = 200'

FILED *[Signature]*
RECEIVED

MAR 11 1970

COUNTY SURVEYOR
DOUGLAS COUNTY, ORE.

**COUNTY SURVEYORS FILE DATA
DO NOT REMOVE FROM OFFICE**



REGISTERED
OREGON
LAND SURVEYOR

[Signature]
JUL 23, 1967
NILE HOOVER
799