



LEGEND

- - - - - OPEN TRENCH & YEAR.
- — — — — CLOSED TRENCH & YEAR.

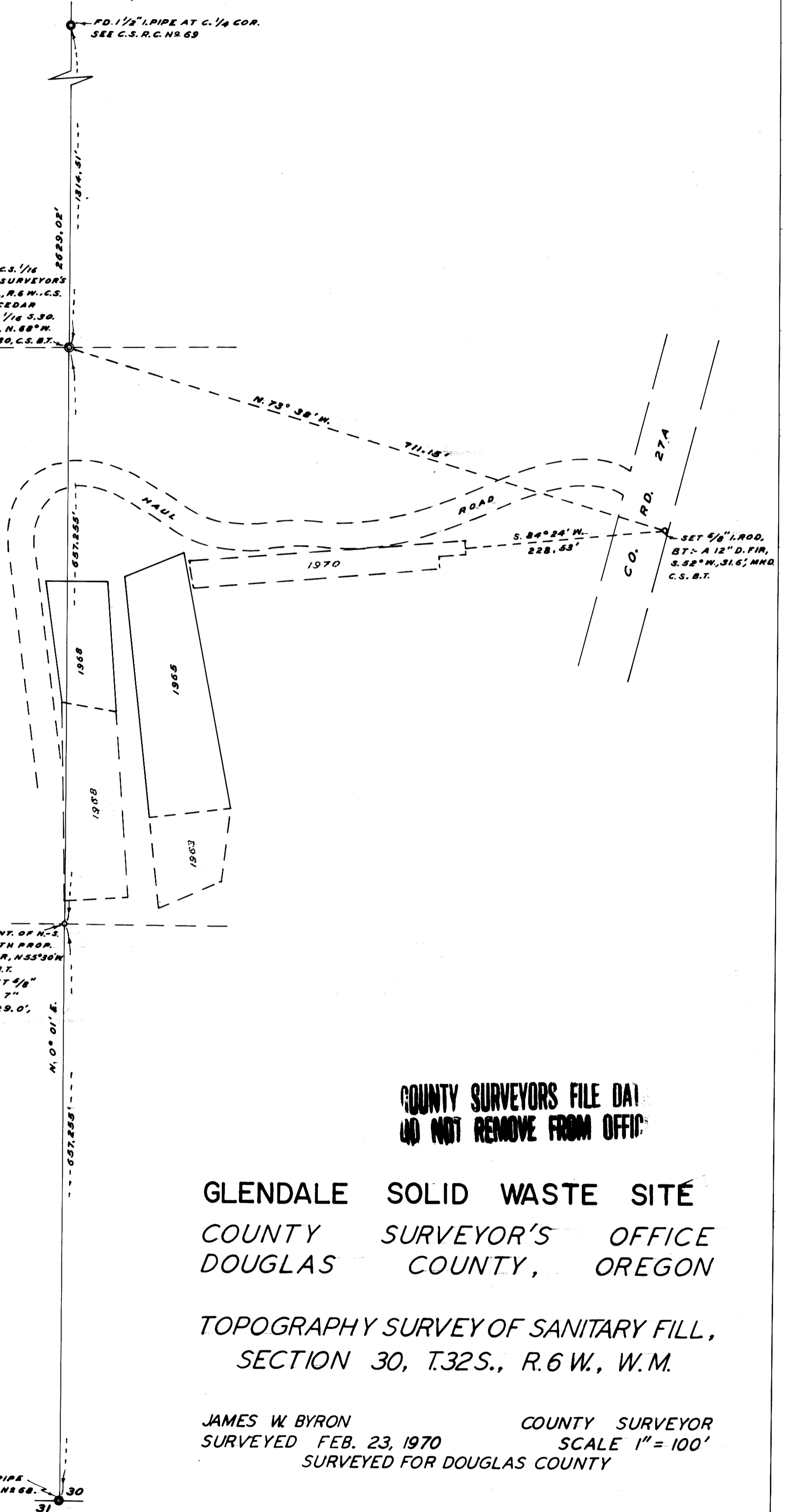
NOTE: - BEARING ARE MAGNETIC,
VAR. = 20°00'

SET BRASS CAP AT C.S. 1/16
COR., MKD. COUNTY SURVEYORS
OFFICE, 1970. T.32S., R.6 W., C.S.
1/16 S.30. BT: - 13" CEDAR
S.51°E. 78.5'; MKD. C.S. 1/16 S.30.
C.S. BT; A 10' LAUREL N. 88°W.
34.8'; MKD. C.S. 1/16 S.30, C.S. BT.

FD. 1/2" PIPE AT C. 1/4 COR.
SEE C.S. R.C. NR 69

SET 5/8" I. ROD AT INT. OF N-S
CENTER LINE & SOUTH PROP.
LINE. BT: - 13" D. FIR, N53°30'W
42.8'; MKD. P.L. C.S. B.T.
AUG. 3, 1970: RESET 5/8"
I. ROD, NEW BT: - A 7"
LAUREL, S. 81°W. 29.0';
MKD. P.L. C.S. B.T.

SET 5/8" I. ROD,
BT: - A 12" D. FIR,
S. 52°W. 31.6'; MKD.
C.S. B.T.



COUNTY SURVEYORS FILE DAI
DO NOT REMOVE FROM OFFICE

GLENDALE SOLID WASTE SITE
COUNTY SURVEYOR'S OFFICE
DOUGLAS COUNTY, OREGON

TOPOGRAPHY SURVEY OF SANITARY FILL,
SECTION 30, T.32S., R.6 W., W.M.

JAMES W. BYRON COUNTY SURVEYOR
SURVEYED FEB. 23, 1970 SCALE 1" = 100'
SURVEYED FOR DOUGLAS COUNTY

REGISTERED
OREGON
LAND SURVEYOR

James W. Byron
BYRON