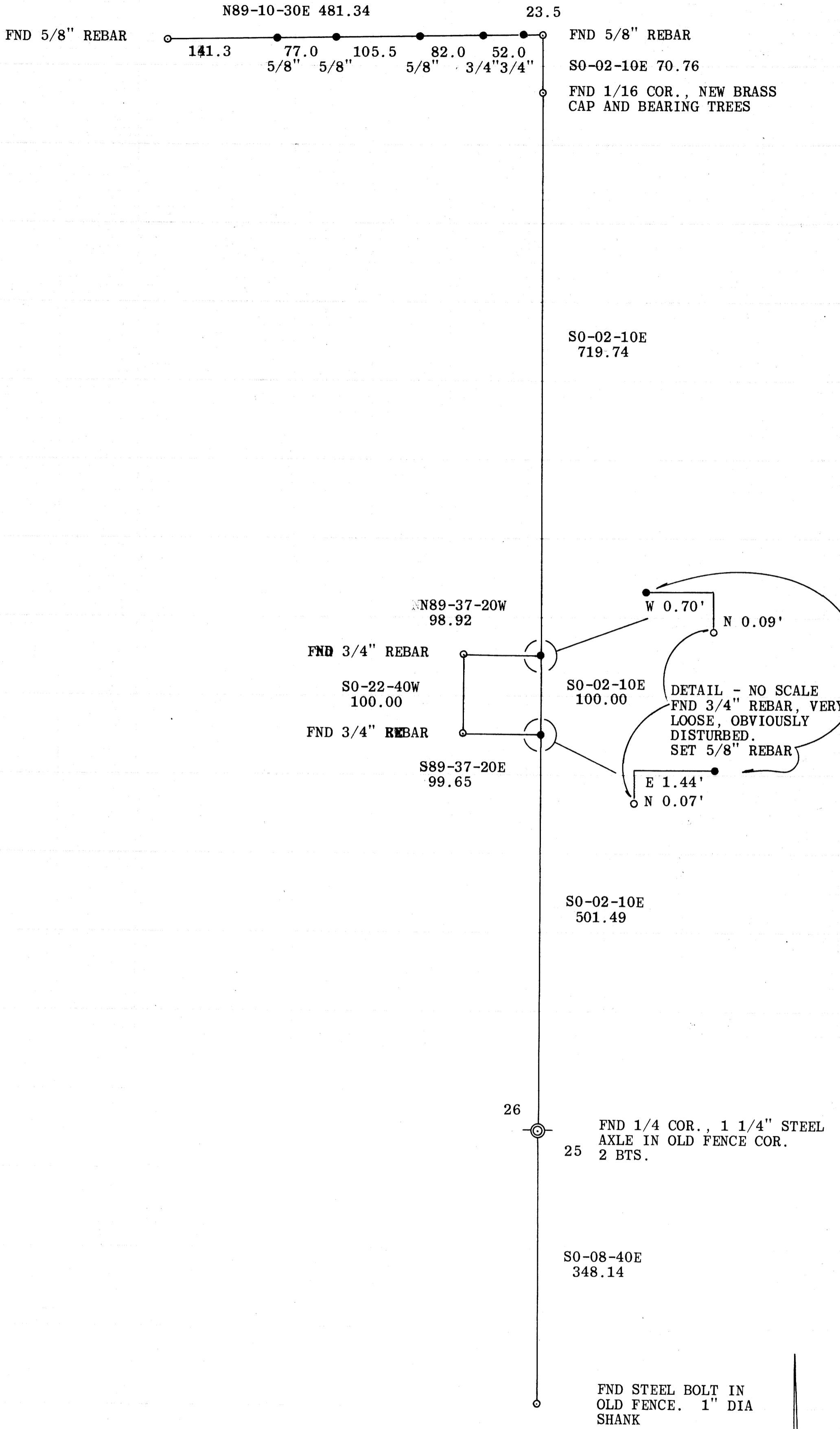


FEB 11 1970

COUNTY SURVEYOR
DOUGLAS COUNTY, ORE.



- FOUND AS NOTED
- SET STEEL REINFORCING BAR OF DIAMETER SHOWN

SURVEY FOR LYNN COOPER
TO SET CORNERS AS SHOWN
S26 T27S R7W., WM
February, 1970

1"=100'

BASE OF BEARINGS: Solar of Douglas County Road
Department survey of 1969

COUNTY SURVEYORS FILE DATA
DO NOT REMOVE FROM OFFICE

