

COUNTY SURVEYORS FILE DATA
DO NOT REMOVE FROM OFFICE

FILED
RECEIVED

FEB 16 1970

COUNTY SURVEYOR
DOUGLAS COUNTY, ORE.

M 32-15

RE-ESTABLISHMENT OF COMMON CORNER

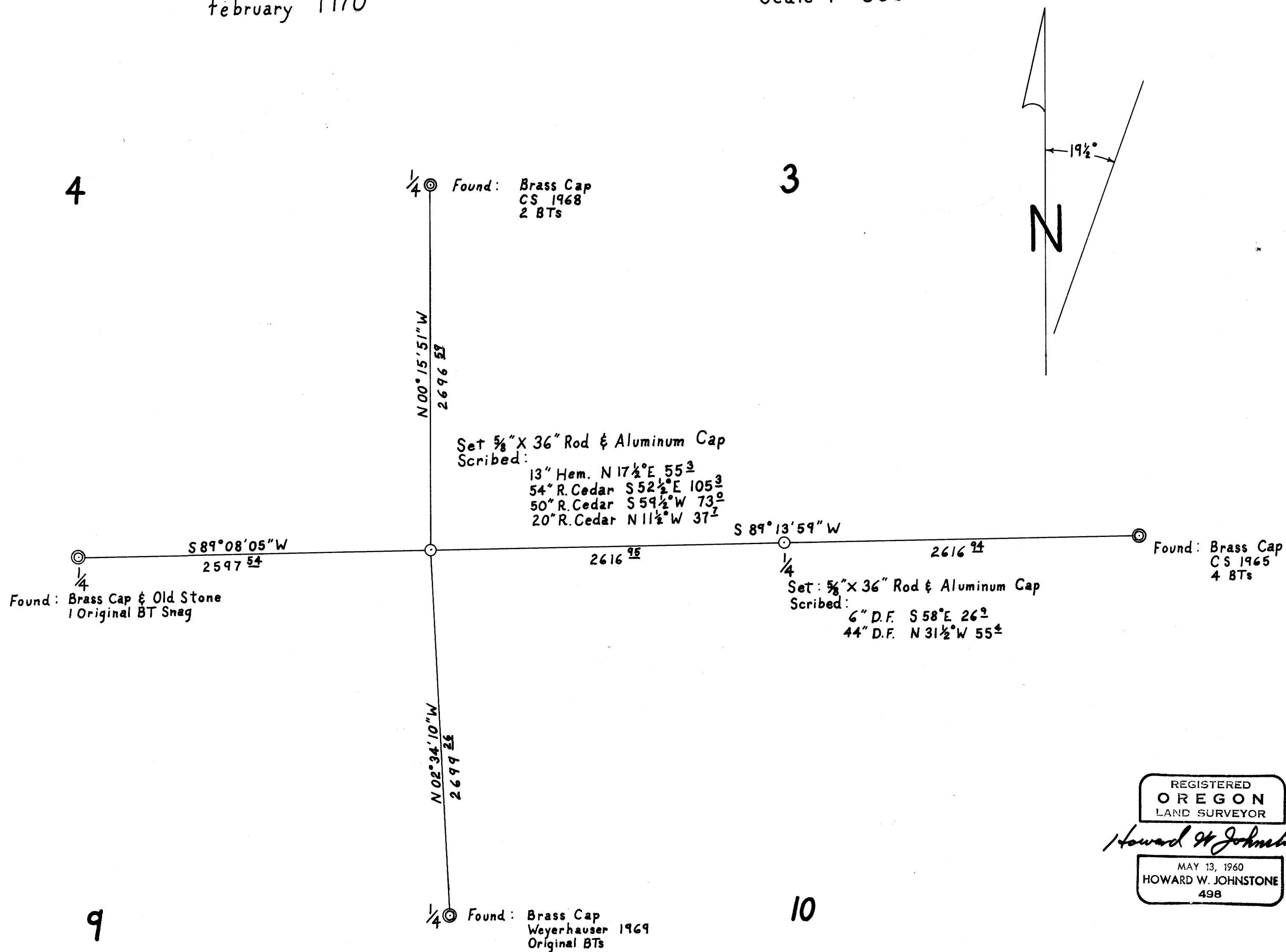
Sec. 3, 4, 9 & 10, T. 24 S. R. 8 W.

Surveyed For Roseburg Lumber Company

Surveyed By Howard W. Johnstone

February 1970

Scale 1" = 600'



REGISTERED
OREGON
LAND SURVEYOR

Howard W. Johnstone

MAY 13, 1960
HOWARD W. JOHNSTONE
498

MAP FILE M 32-15