

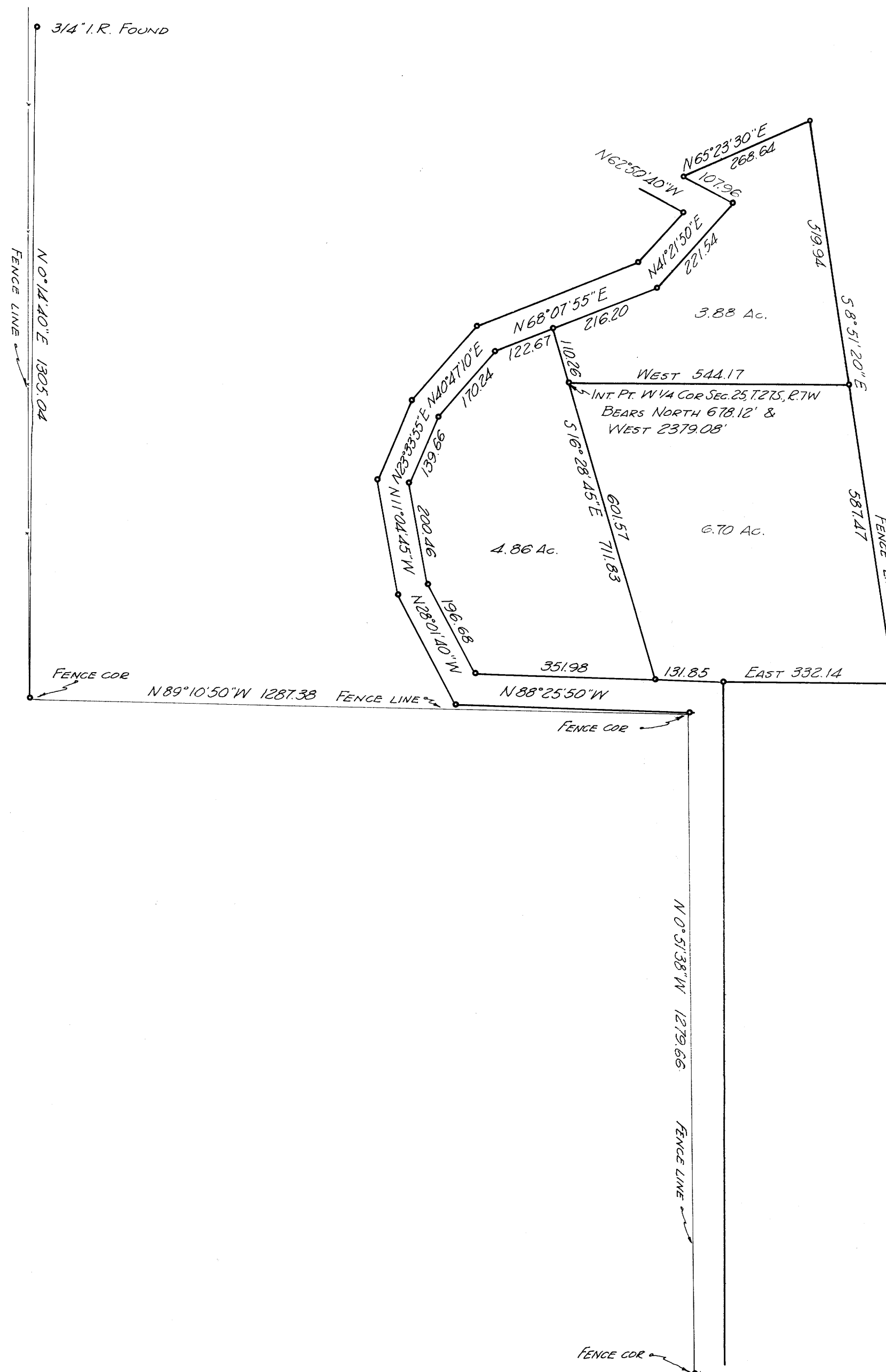
SURVEY IN SECTION 25, T. 27 S., R. 7 W., W.M.
 SURVEYED FOR ED ZEIGLER
 SURVEYED BY R. H. GEE NOVEMBER, 1969
 SCALE 1" = 200'

COUNTY SURVEYORS FILE DATA
 DO NOT REMOVE FROM OFFICE

FILED *LL*
 RECEIVED

DEC 23 1969

COUNTY SURVEYOR
 DOUGLAS COUNTY, ORE.



BASE BEARING
 W 1/4 SEC. 36 TO W 1/4 COR. SEC. 25 = NORTH
 • DENOTES 5/8" I.R. SET

