

SURVEY TO SET PROPERTY CORNERS & TO CORRECT ERROR
IN REVERSE CURVES-LOCATED IN SECTIONS 6 & 7, T27S, R6W, W.M.

SURVEYED FOR HERMAN STOFFEL
SURVEYED BY DON E. GARRETT
DECEMBER, 1969 SCALE: 1"=100'

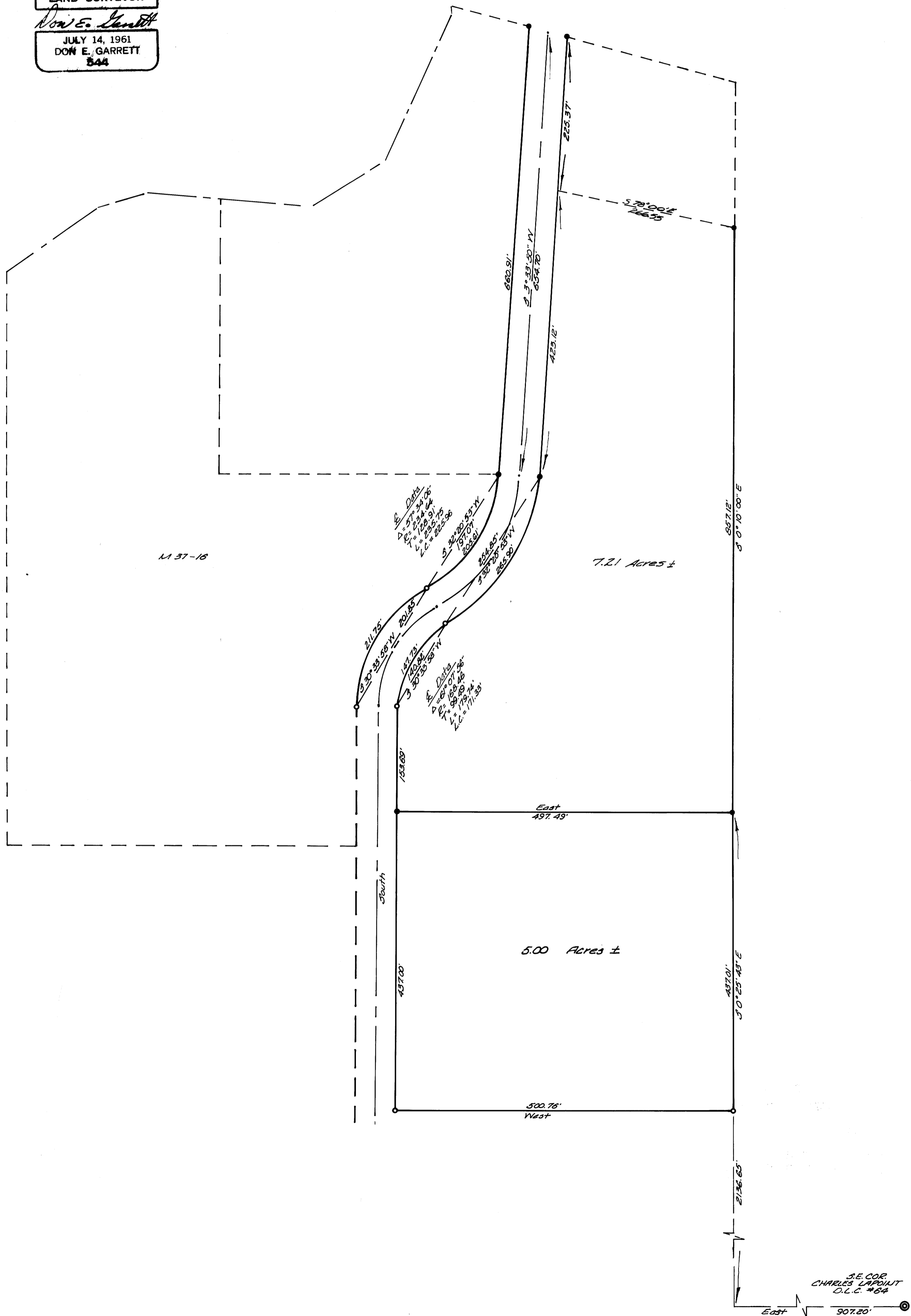
● - Fd. 5/8" I. ROD
○ - SET 3/8" I. ROD
FOR BASE BEARING SEE M37-16
SEE M37-16 & M38-29 FOR INCORRECT REVERSE CURVES

FILED
RECEIVED

DEC 22 1969

COUNTY SURVEYOR
DOUGLAS COUNTY, ORE.

REGISTERED
OREGON
LAND SURVEYOR
Don E. Garrett
JULY 14, 1961
DON E. GARRETT
544



SE COR
CHARLES LAPOINT
O.C.C. #84
East 907.20'