

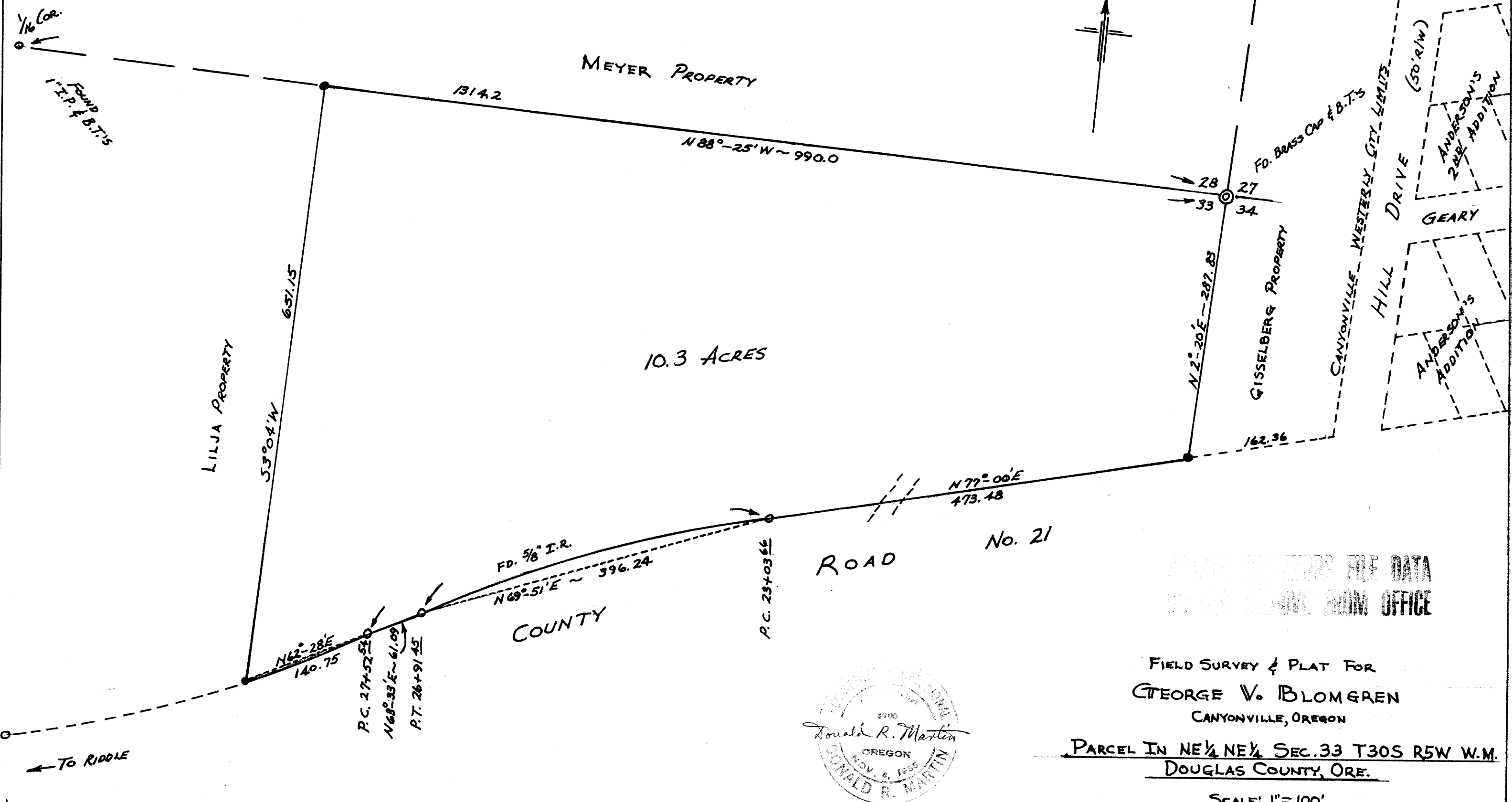
FILED  
RECEIVED

DEC 10 1969

COUNTY SURVEYOR  
DOUGLAS COUNTY, ORE.

BASE OF BEARINGS { SEC. LINE N88°-25'W - M38-62  
SEC. LINE N2°-20'E - CS M15-33

• SET 5/8" IRON PIPE MONUMENTS



ENGINEERS FILE DATA  
BY THE REMOVE FROM OFFICE

FIELD SURVEY & PLAT FOR  
GEORGE V. BLOMGREN  
CANYONVILLE, OREGON

PARCEL IN NE 1/4 NE 1/4 SEC. 33 T30S R5W W.M.  
DOUGLAS COUNTY, ORE.

SCALE: 1" = 100'

MARTIN ENGINEERING SERVICE - MYRTLE CREEK, OREGON



REVISED: Nov. 1969 (THIS PARCEL NOW IN CITY LIMITS)

M 38-70

M 38-70