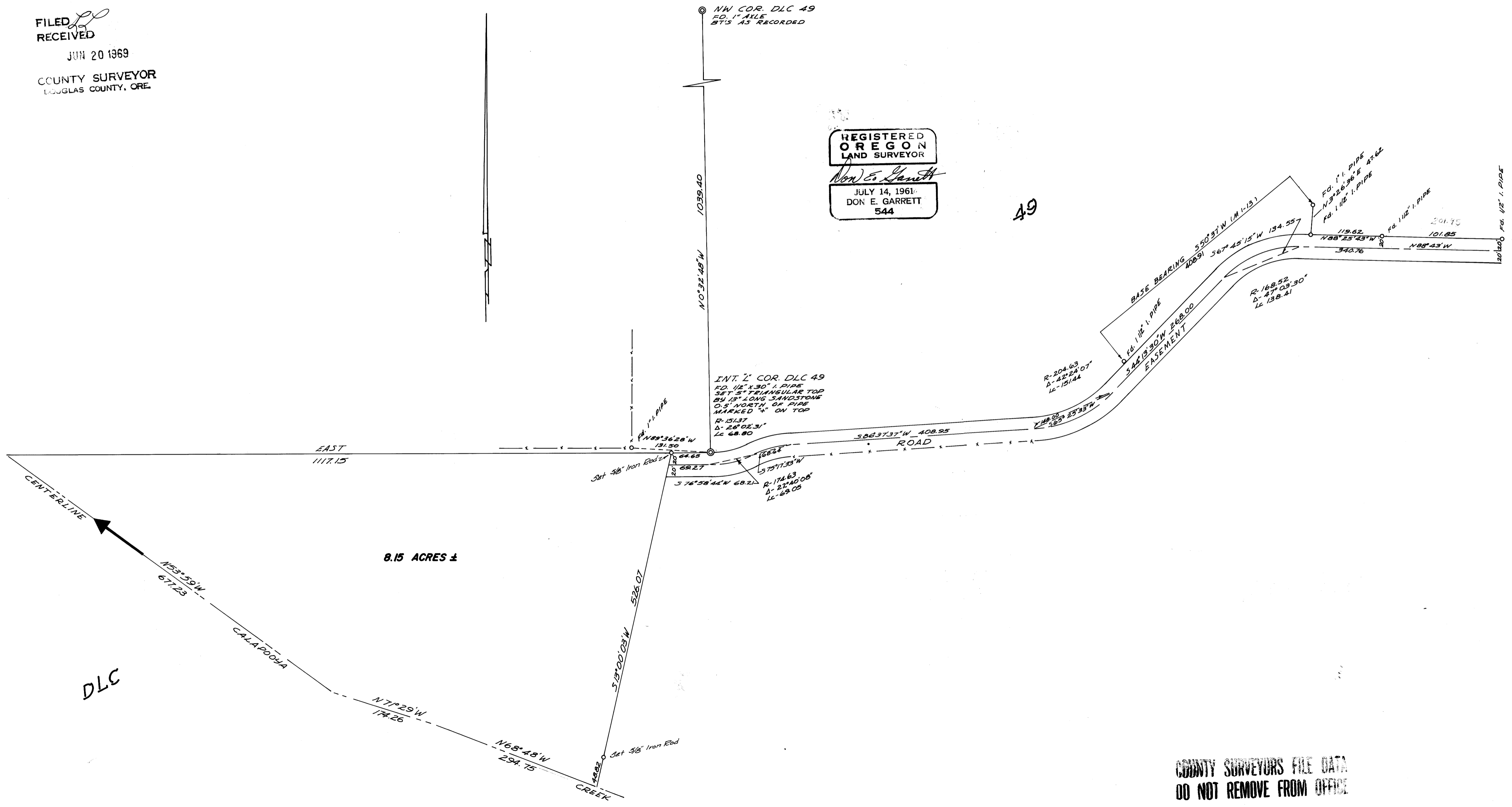


SURVEY IN SECTION 9, DLC 49, TWP. 25 SOUTH, RNG. 4 WEST, W.M.
 Surveyed for Walter Faas by Don E. Garrett
 June 1969
 Scale 1" = 100'

FILED
 RECEIVED
 JUN 20 1969
 COUNTY SURVEYOR
 DOUGLAS COUNTY, ORE.

REGISTERED
 OREGON
 LAND SURVEYOR
Don E. Garrett
 JULY 14, 1961
 DON E. GARRETT
 544



COUNTY SURVEYORS FILE DATA
 DO NOT REMOVE FROM OFFICE

MAP FILE M 38-17

MAP FILE M 38-17