

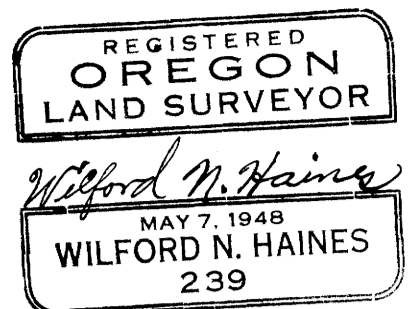
M38-69
F.B. H-126, H-133, H-194

COUNTY SURVEYORS FILE DATA
DO NOT REMOVE FROM OFFICE

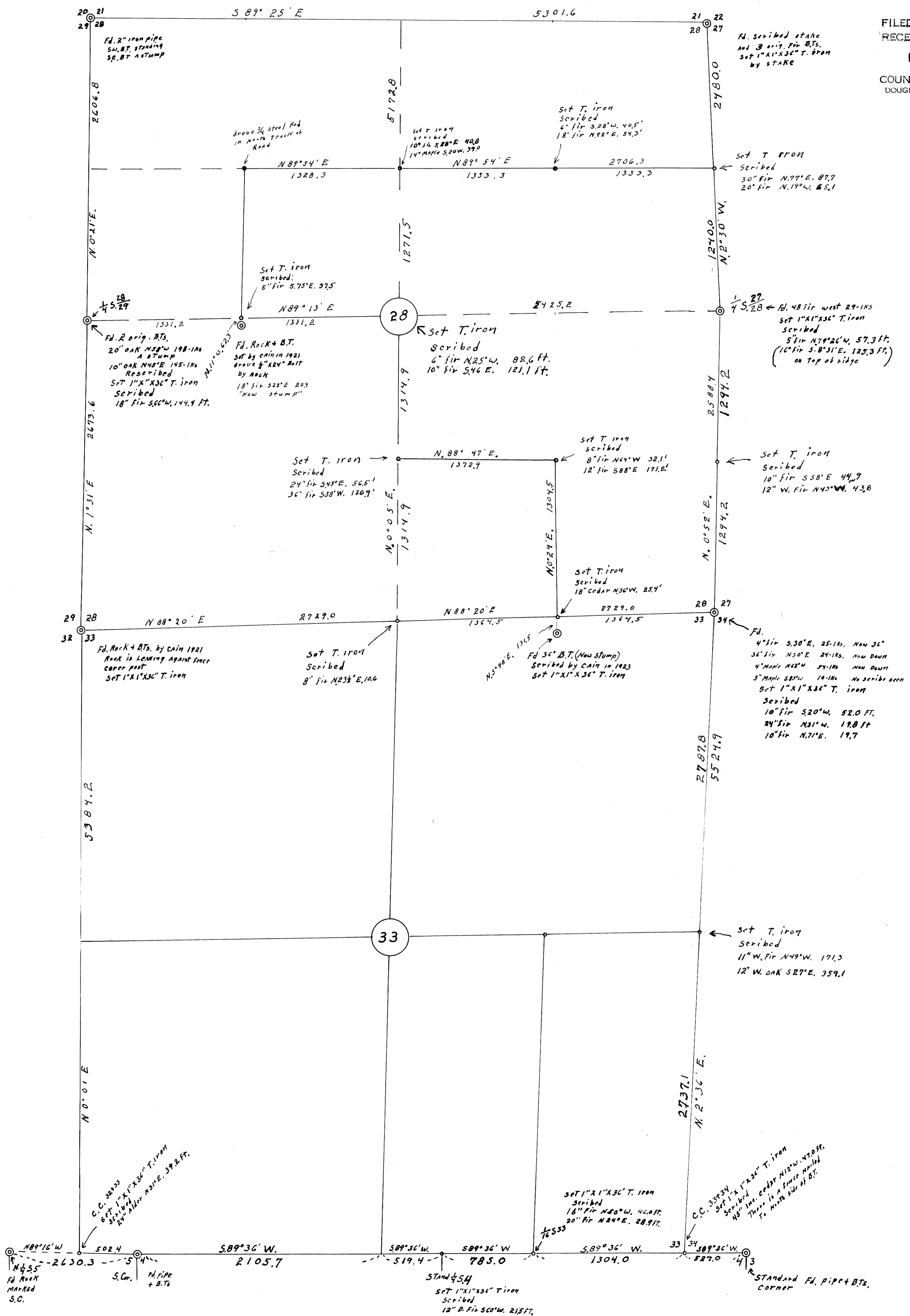
TOWNSHIP 22 SOUTH, RANGE 7 WEST, WILLAMENT MERIDIAN,
SECTIONS 28 & 33

Scale 1" = 500' April 1961

for
WOOLLEY LOGGING CO. & E.G. WHIPPLE MILL, DRAIN, ORE.



FILED
RECEIVED
DEC 8 1969
COUNTY SURVEYOR
DOUGLAS COUNTY, ORE.



F.B. H-126, H-133, H-194
C.S. FILE 51/191
M38-69