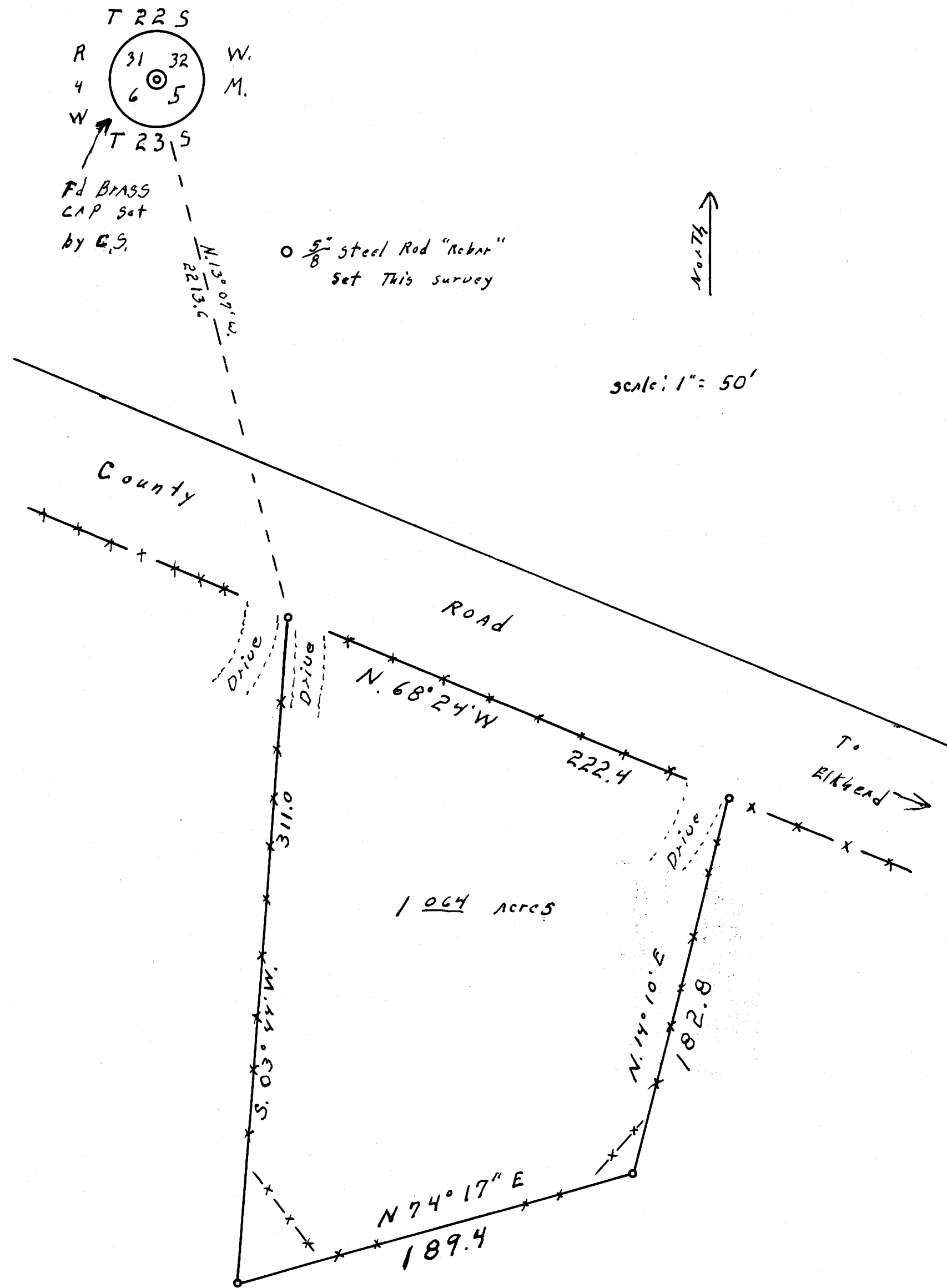


COUNTY SUPERVISORS FILE DATA  
DO NOT REMOVE FROM OFFICE

M38-68



SECT. 5, T.23S., R.4W., W.M.

"Fred" Applegate you call it, Oreg.

Nov. 1969

This 1.064 acres includes the one acre with houses that is called for in Deed Description.

REGISTERED  
OREGON  
LAND SURVEYOR

*Wilford N. Haines*

MAY 7, 1948  
WILFORD N. HAINES  
239

COUNTY SURVEYOR  
DOUGLAS COUNTY, OREG.

FILED  
RECEIVED  
DEC 8 1969

M38-68