

SURVEY TO ESTABLISH PROPERTY CORNERS  
 IN SECTIONS 8 and 17, T 26 S, R 4 W. W.M.  
 DOUGLAS COUNTY, ORE.

SURVEYED FOR - JIM BEVANS  
 SURVEYED BY - W.S. BARNES

NOV. 1969  
 SCALE 1" = 100'

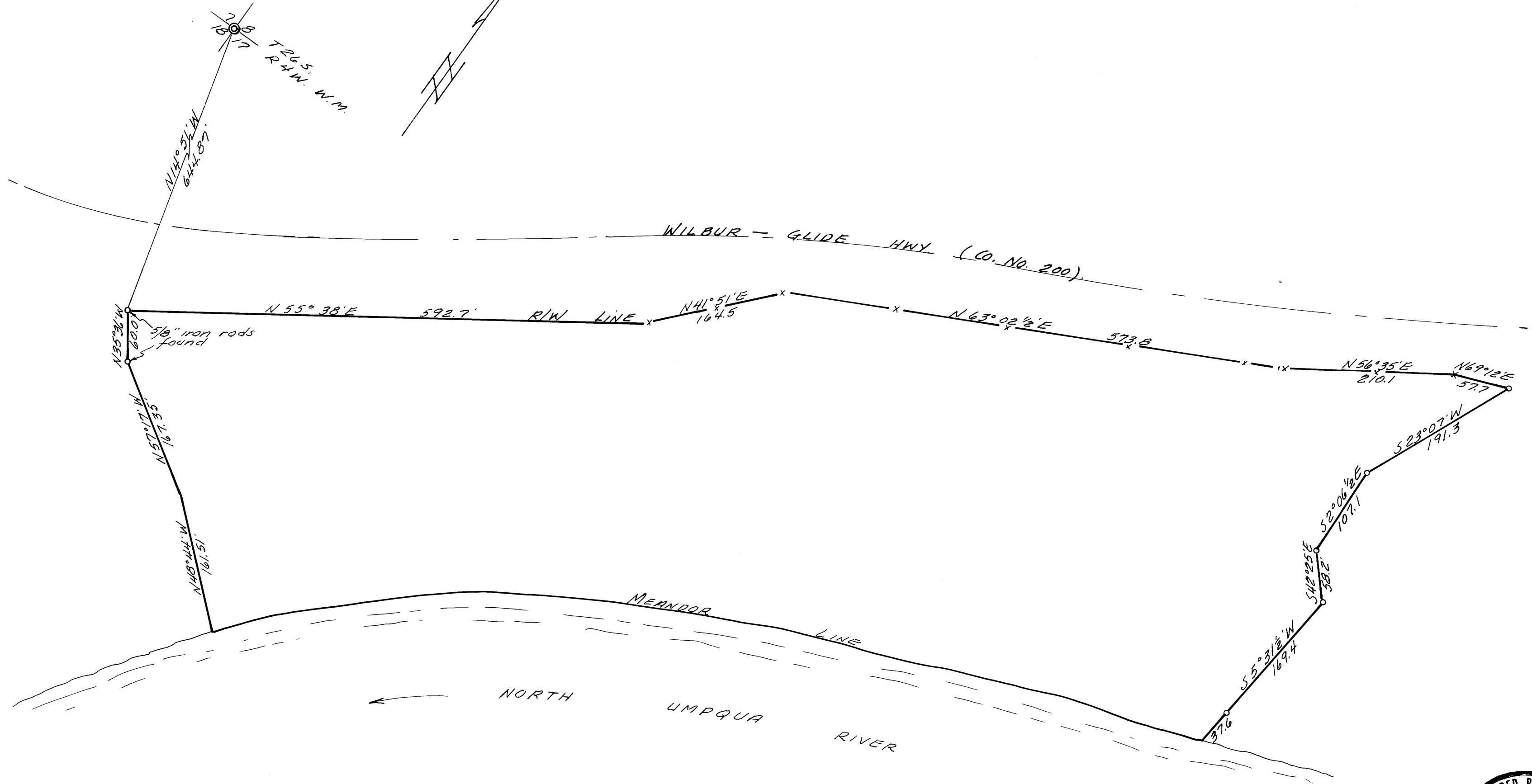
COUNTY SURVEYORS FILE DATA  
 TO BE REMOVED FROM OFFICE

FILED *SL*  
 RECEIVED

DEC 2 1969

COUNTY SURVEYOR  
 DOUGLAS COUNTY, ORE.

M 38-65



o Denotes 3/4" iron rods set.  
 Base bearing taken from section corner tie,  
 see reference C.S. File 55/81



M 38 - 65