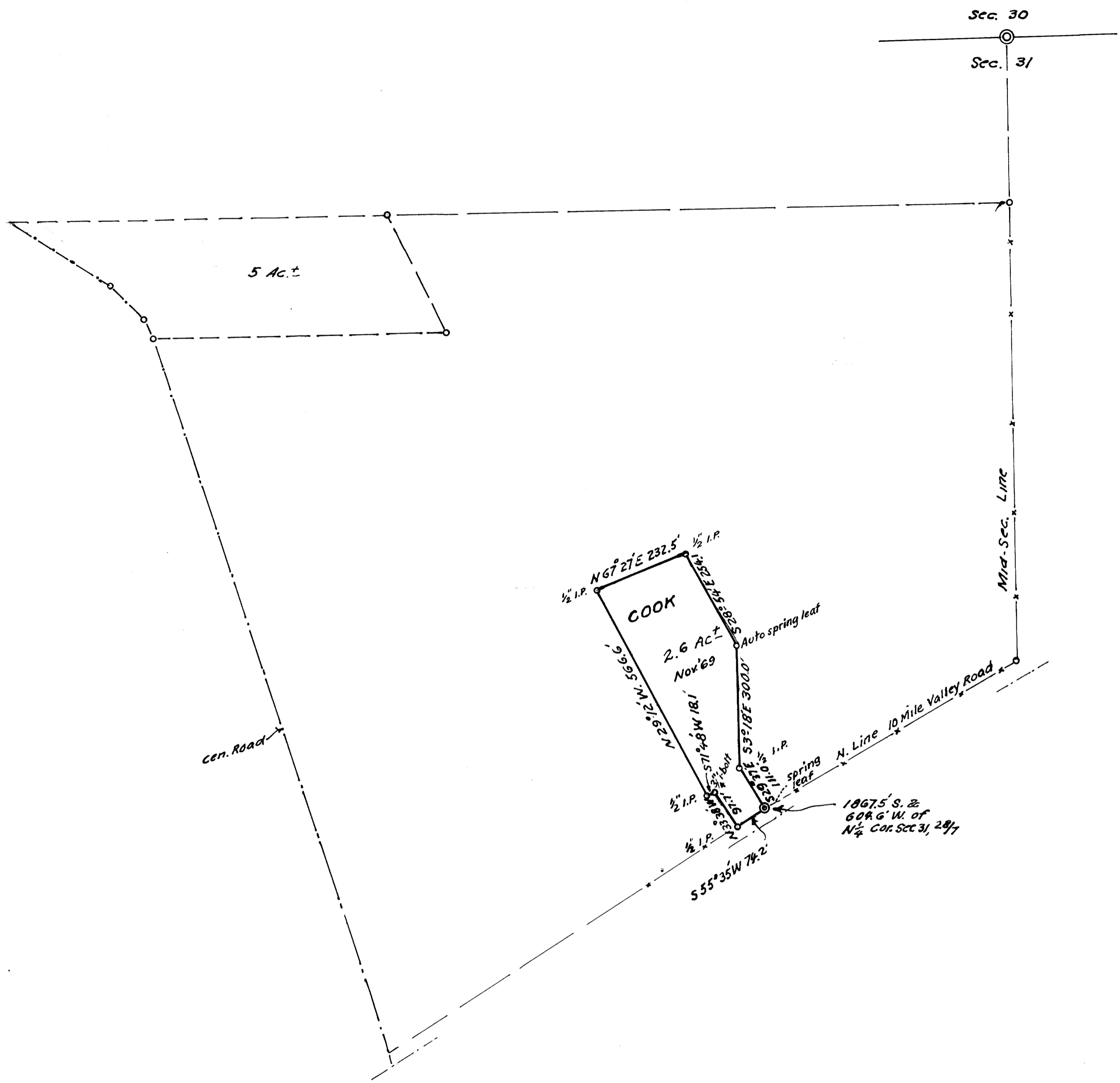


FILED
RECEIVED
NOV 12 1969
COUNTY SURVEYOR
DOUGLAS COUNTY, ORE



RALPH & ALTA HOWARD
TO MR & MRS WM. COOK
IN NW 1/4 SEC. 31, T28S; R7W; W.M.;
DOUGLAS COUNTY, ORE.
NOV. 1969 1" = 200'

PLANNING FILE DATA
COUNTY ENGINEERING OFFICE