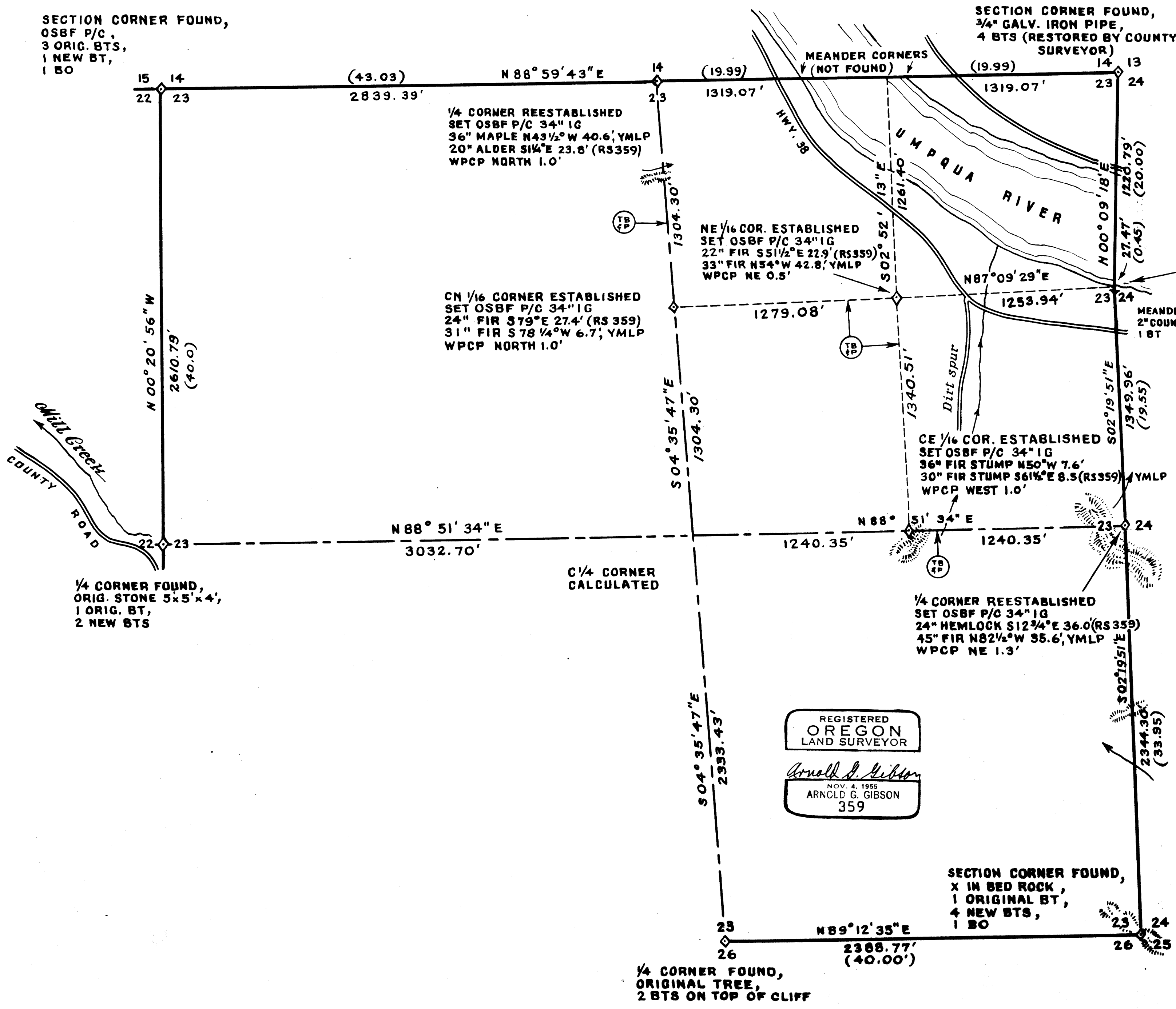




COUNTY SURVEYORS FILE DATA  
DO NOT REMOVE FROM OFFICE

SECTION CORNER FOUND,  
OSBF P/C,  
3 ORIG. BTS,  
1 NEW BT,  
1 BO

SECTION CORNER FOUND,  
3/4" GALV. IRON PIPE,  
4 BTS (RESTORED BY COUNTY  
SURVEYOR)



SURVEY FOR  
STATE OF OREGON - DEPARTMENT OF FORESTRY  
**SECTION 23, T 22 S, R 10 W, W.M.**

DOUGLAS COUNTY, OREGON

TRANSIT AND CHAIN SURVEY BY: D. SMITH, W. COOK, D. BROWN, B. METCALF,  
AND B. HANSEN  
DRAWN BY: D. SMITH. OCTOBER 27, 1969  
SCALE: 1" = 400'

**LEGEND**

- OSBF P/C = OREGON STATE BOARD OF FORESTRY 1/2" x 36" GALV. IRON PIPE WITH 3" BRONZE CAP
- WPCP = WHITE PAINTED CEDAR POST, 4" x 4" x 72"
- YMLP = YELLOW METAL LOCATION POSTER
- IG = IN GROUND
- = TRUE BLAZED & POSTED
- BTS = BEARING TREES
- BO = BEARING OBJECT (X ON ROCK)
- ( ) = RECORD (ORIGINAL) DISTANCE

FOR DETAILED REPORT ON FOUND CORNERS SEE COUNTY RECORDS. NEW CORNERS AND ACCESSORIES MARKED ACCORDING TO "MANUAL OF INSTRUCTIONS FOR THE SURVEY OF THE PUBLIC LANDS OF THE U.S.", OTHER MARKINGS AS INDICATED (-----).  
ESTABLISHED = NEW CORNER SET  
REESTABLISHED = LOST GLO, CADASTRAL OR OTHER CORNER RESET BY PROPORTIONATE MEASUREMENT OR AS NOTED.

REGISTERED  
OREGON  
LAND SURVEYOR  
*Arnold G. Gibson*  
NOV. 4, 1955  
ARNOLD G. GIBSON  
359

**SOLAR OBSERVATION**  
*Taken by E.D. Moore for section line 22, 23, 26 & 27, T22S, R10W, W.M.*

MAGNETIC VARIATION	19° 23' E
DATE	MARCH 31, 1967
STANDARD TIME	05:00:50 PM
LOCAL TIME	02:48:32 PM
REF. & PAR. CORRECTION	-1.13'
TRUE ALTITUDE	36° 54' 02"
LATITUDE	43° 38' 16"
SUN'S DECLINATION	N 04° 10' 35"
PLACE OF OBSERVATION	S 77° 40' 16" E
451.78' FROM WITNESS CORNER 26 & 27, T 22 S, R 10 W, W.M.	