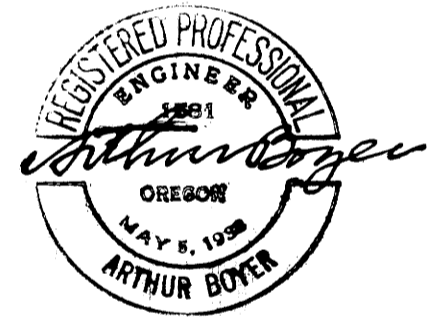
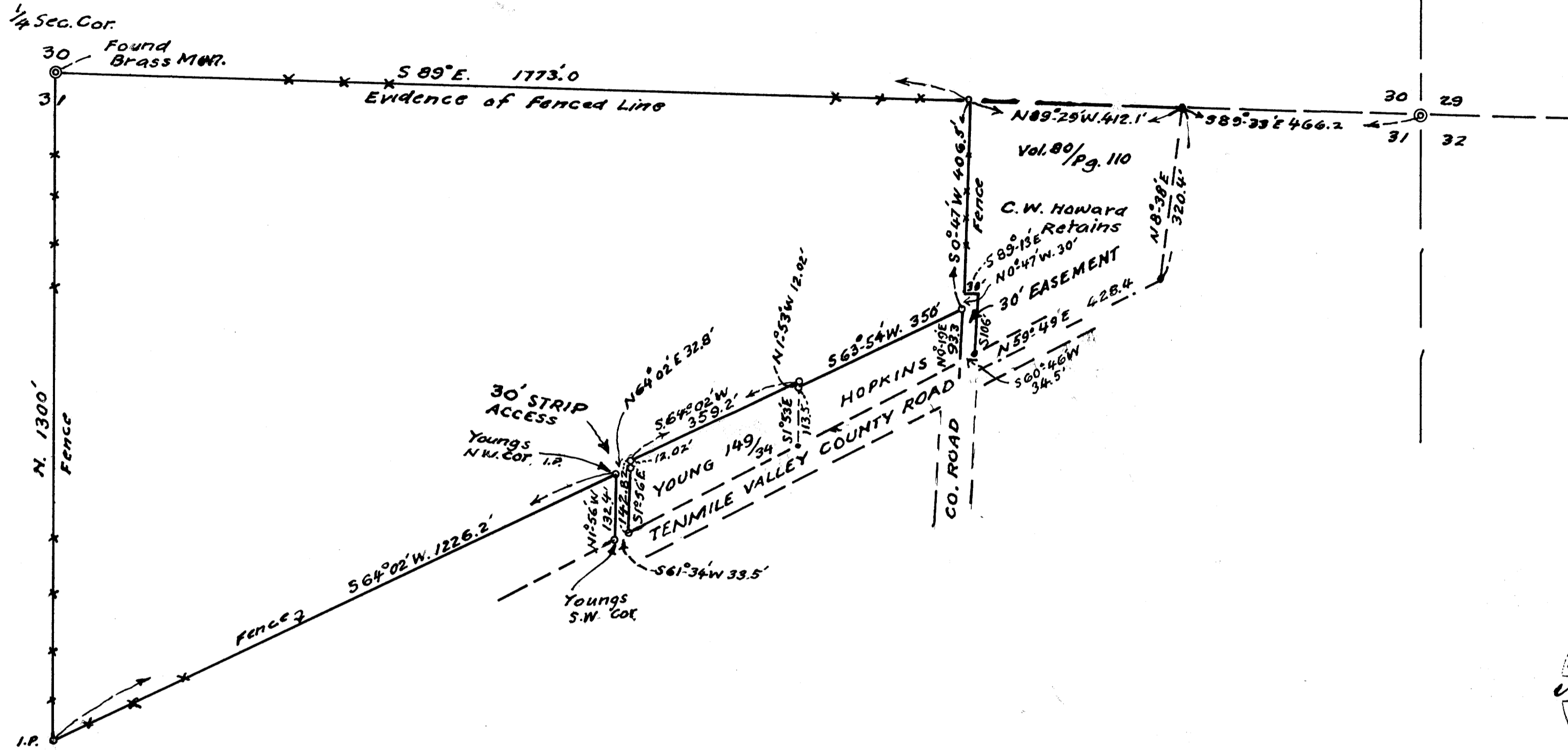


FILED
RECEIVED

OCT 24 1969

COUNTY SURVEYOR
DOUGLAS COUNTY, ORE.



CHESTER W. HOWARD
ACREAGE FOR TRANSFER IN
SEC. 31, T28S; R7W; WM.
DOUGLAS COUNTY, ORE.
OCT 1969 BB. 1" = 200'

COUNTY SURVEYORS FILE DATA
DO NOT REMOVE FROM OFFICE