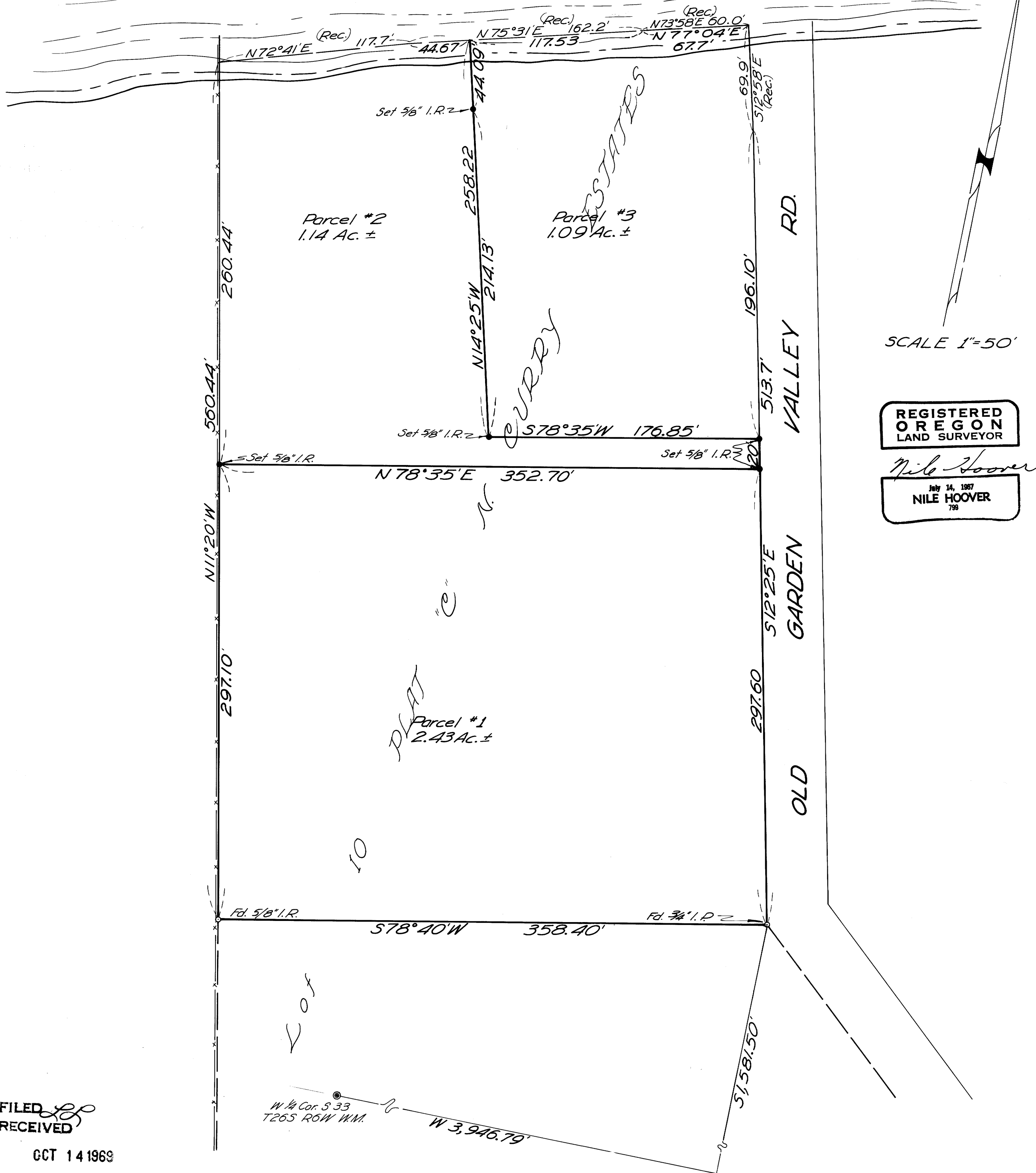


A SURVEY TO ESTABLISH PROPERTY CORNERS IN A PORTION OF LOT 10 PLAT C N. CURRY ESTATES, DOUGLAS COUNTY, ORE. SURVEYED FOR THE OTT ESTATE, OCT. 1969, N. H. HOOVER, SURVEYOR.

← NORTH UMPQUA RIVER



FILED RECEIVED

OCT 14 1969

COUNTY SURVEYOR DOUGLAS COUNTY, ORE.

COUNTY SURVEYORS FILE DATA DO NOT REMOVE FROM OFFICE