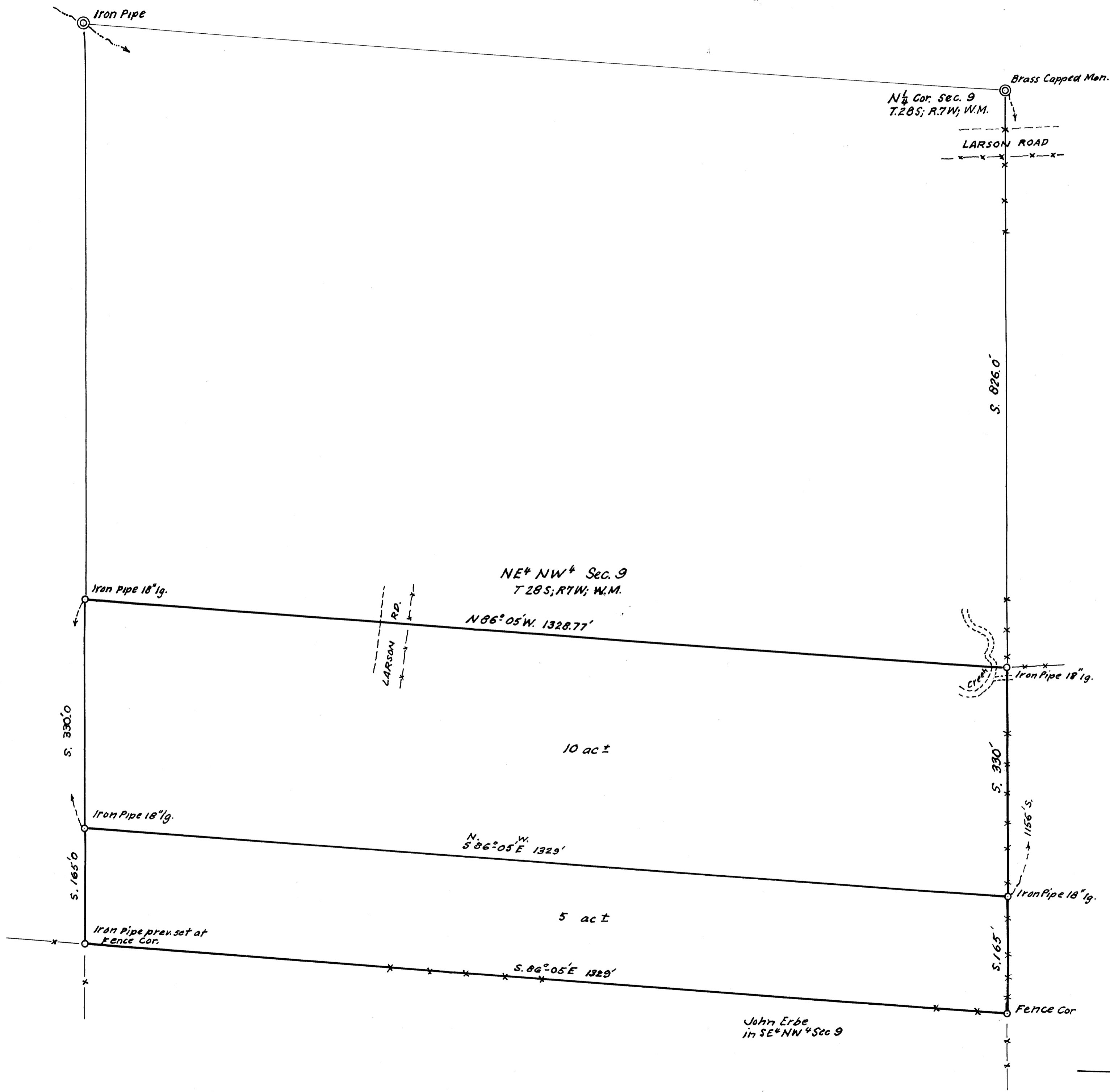


FILED
RECEIVED

SEP 26 1969

COUNTY SURVEYOR
DOUGLAS COUNTY, ORE

FILE NO. M 38 + 49



NE¹/₄ NW¹/₄ Sec. 9
T.28S; R.7W; W.M.

N 86° 05' W 1328.77'

10 ac ±

N 86° 05' E 1329'

5 ac ±

S. 86° 05' E 1329'

John Erbe
in SE¹/₄ NW¹/₄ Sec 9



R. E. WYLIE ACREAGE
IN NE¹/₄ NW¹/₄ SEC. 9, T28S; R.7W; W.M.
DOUGLAS COUNTY, ORE

SEPT. 1969

1" = 100 ft.

COUNTY SURVEYORS FILE DATA
DO NOT REMOVE FROM OFFICE

M 38 - 49