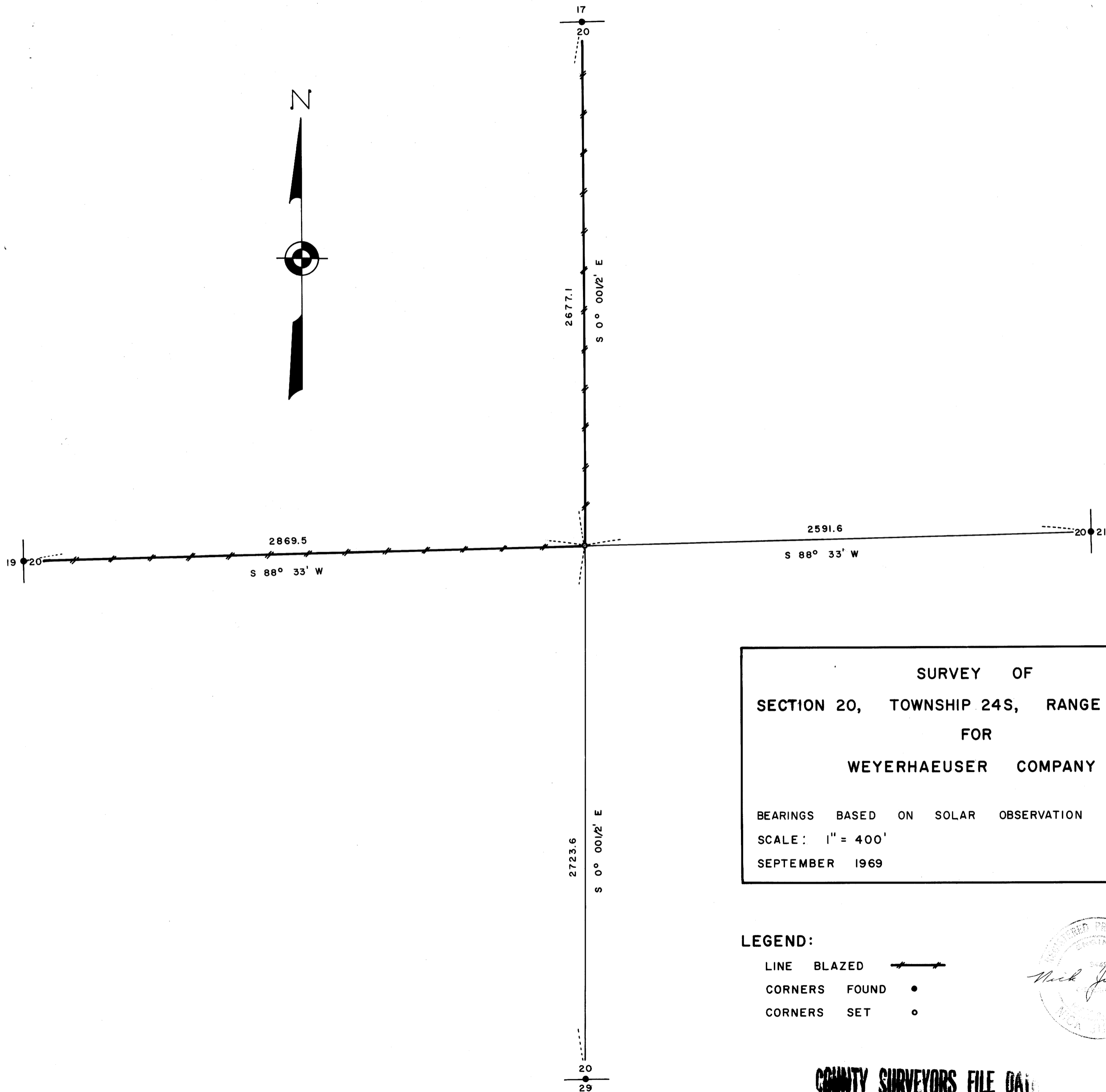


FILED *SL*
RECEIVED


SEP 18 1969

COUNTY SURVEYOR
DOUGLAS COUNTY, ORE.



SURVEY OF
SECTION 20, TOWNSHIP 24S, RANGE 8W, W.M.
FOR
WEYERHAEUSER COMPANY
BEARINGS BASED ON SOLAR OBSERVATION
SCALE: 1" = 400'
SEPTEMBER 1969

LEGEND:

- LINE BLAZED 
- CORNERS FOUND •
- CORNERS SET ○



COUNTY SURVEYORS FILE DATA
DO NOT REMOVE FROM OFFICE

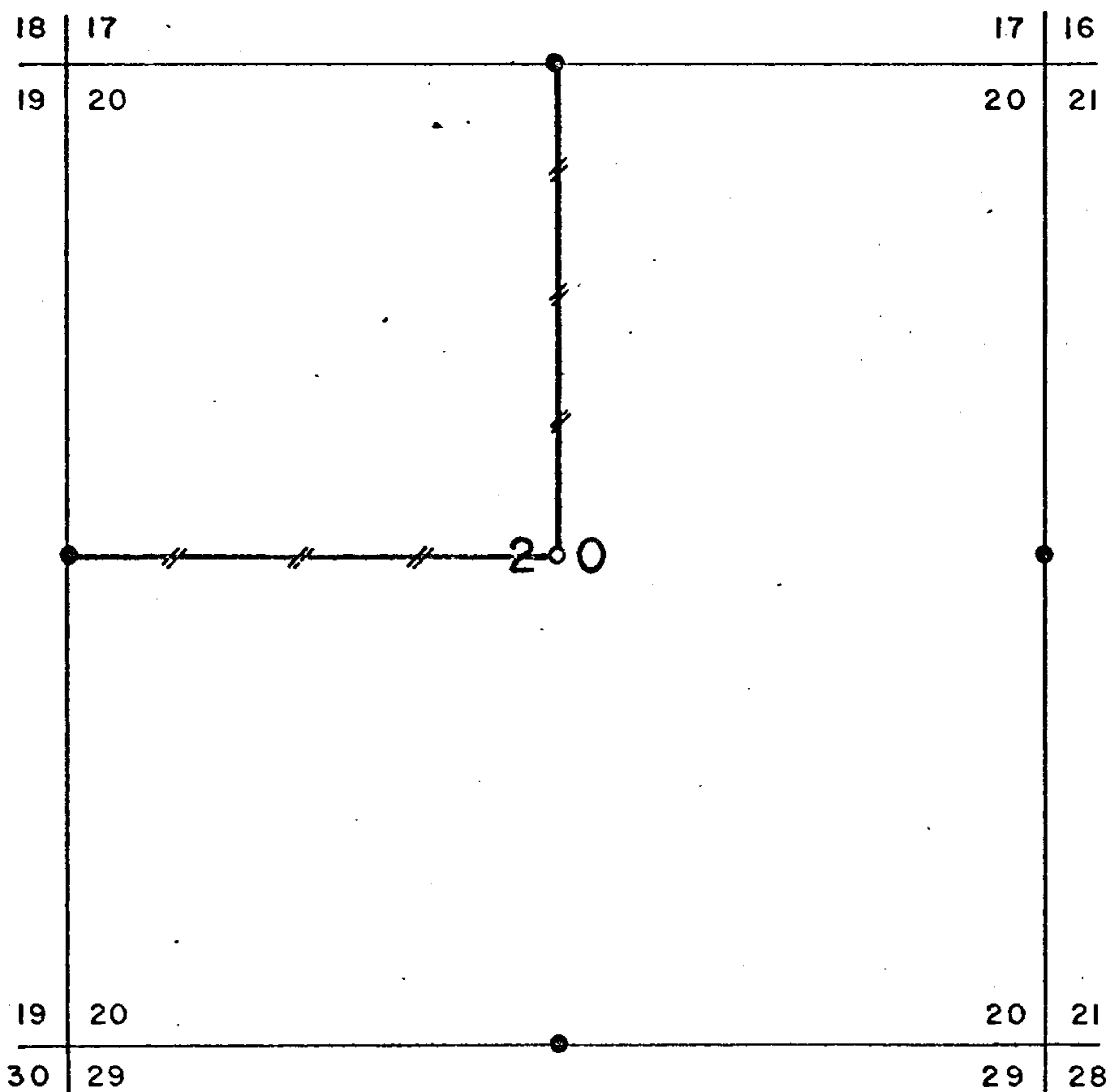
O.S. File 55/120

Map File M32-42


TRIANGLE ENGINEERING CO.

SURVEY OF

SECTION 20, TOWNSHIP 24S, RANGE 8W, W.M.



Line Blazed 

Corners Found 

Corners Set 

Transit and slope chain survey

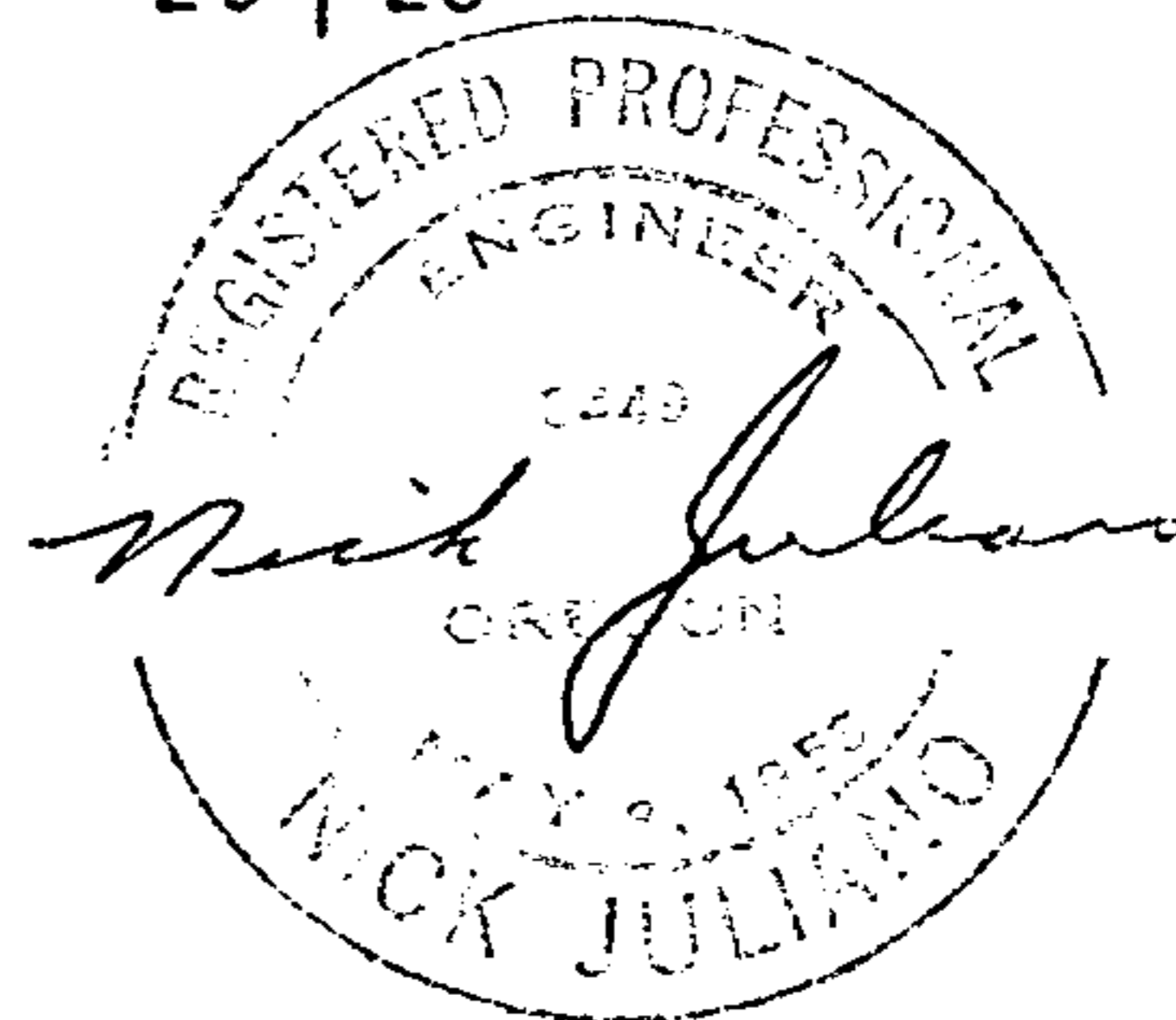
This survey was made for Weyerhaeuser Company, North Bend, Oregon by Nick Juliano Oregon Professional Engineer, Reg. No. 3449

Helpers: Donald Peel and Leslie Roberts

Date of survey: July 21 through August 29, 1969

Filed for record at Douglas Co. Surveyors Office, September 1969. Douglas County Surveyors File No. _____

Distribution:
 Triangle Engineering Co.
 Weyerhaeuser Company
 Douglas Co. Surveyors Office



Reported Sept. 1969

By Nick Juliano

SUBDIVISION OF SECTION 20, TOWNSHIP 24 SOUTH, RANGE 8 WEST,
WILLAMETTE MERIDIAN

The following corners were found and used for control:

- $\frac{1}{4}$ corner common to Sections 19&20, T24S, R8W
- $\frac{1}{4}$ corner common to Sections 17&20, T24S, R8W
- $\frac{1}{4}$ corner common to Sections 20&21, T24S, R8W
- $\frac{1}{4}$ corner common to Sections 20&29, T24S, R8W

Closed traverses were run for the subdivision and true line determination.

Bearings were based on solar observation.

The compass rule was used in balancing the closed traverses.

A closure of not less than 1 in 5000 was obtained, both for the chaining and angles.

SETTING PROPERTY CORNERS AND DETERMINATION OF THE TRUE LINE

The center of section 20 was determined by the intersection of the N-S and E-W centerlines of said section. Said corner was set by staff compass and chain from the nearest control hub. Corner references were set by compass and chain using a declination of 20 degrees.

Offsets in the cardinal direction were calculated from each control hub to the true line. A staff compass was run between the offsets. Trees on both sides of the true line were marked with two blazes angled toward the true line. A notch was cut in each blaze. 2" x 8" aluminum property line tags were periodically nailed to trees along the true line. Plastic red and white striped engineers flagging was also hung along the true line.

FILED
RECEIVED

SEP 9 1969

COUNTY SURVEYOR
DOUGLAS COUNTY, ORE.

REFERENCE METHOD

All corners were referenced by the Weyerhaeuser Method:

A "W" nail was driven low in a tree. An embossed aluminum plate was nailed head high on the same tree with 8d aluminum nails. Stamped on the plate is the bearing and distance from the "W" nail to the corner.

CORNER DATA

19 | 20 $\frac{1}{4}$ corner common to Sections 19&20, T24S, R8W

BLM Survey Record:

| | | |
|---------------|---------------------|--------|
| BLM Brass Cap | | |
| 28" Fir | N49 $\frac{1}{2}$ E | 49 1ks |
| 27" Fir | S78 $\frac{1}{2}$ W | 36 1ks |

Evidence Found:

| | | |
|---------------|---------------------|--------|
| BLM Brass Cap | | |
| 28" Fir | N49 $\frac{1}{2}$ E | 49 1ks |
| 24" Fir Stump | N78 $\frac{1}{2}$ W | 36 1ks |

Referenced with "W" nails and plates:

| | | |
|---------------|------|-------|
| 26" Fir | S87E | 10.7' |
| 22" Fir Stump | N52W | 17.2' |

$\frac{17}{20}$ $\frac{1}{4}$ corner common to Sections 17&20, T24S, R8W

GLO Survey Record:

| | | |
|---------|-------|--------|
| Post | | |
| 60" Fir | North | 29 1ks |
| 30" Fir | S87W | 61 1ks |

Evidence Found:

| | | |
|---------------|-------|--------|
| Aluminum pipe | | |
| 72" Fir Stump | North | 29 1ks |
| 43" Fir Stump | S87W | 61 1ks |

20 | 21 $\frac{1}{4}$ corner common to Sections 20&21, T24S, R8W

BLM Survey Record:

| | | |
|---------------|------|--------|
| BLM Brass Cap | | |
| 18" Fir | S18E | 59 1ks |
| 18" Fir | S77W | 61 1ks |

Evidence Found:

| | | |
|---------------|------|--------|
| 18" Fir | S22E | 59 1ks |
| 16" Fir | S73W | 61 1ks |
| BLM Brass Cap | | |

CS 55/120-2c

55/120-2

$\frac{20}{29}$

$\frac{1}{4}$ corner common to Sections 20&29, T24S, R3W

BLM Survey Record:

| | | |
|---------------|---------------------|--------|
| BLM Brass Cap | | |
| 12" Fir | N12 $\frac{1}{2}$ E | 76 lks |
| 22" Hemlock | S18 $\frac{1}{2}$ E | 6 lks |

Evidence Found:

| | | |
|---------------|---------------------|--------|
| BLM Brass Cap | | |
| 14" White Fir | N12 $\frac{1}{2}$ E | 76 lks |
| 18" Hemlock | S18 $\frac{1}{2}$ E | 6 lks |

Ctr.
Sec.
20

Center of Section 20, T24S, R3W

Set 2" iron pipe with brass cap. Referenced with "W" nails and plates.

#12

| | | |
|---------|------|-------|
| 36" Fir | S21W | 19.2' |
| 40" Fir | N22E | 9.3' |

CS 55/120-2d