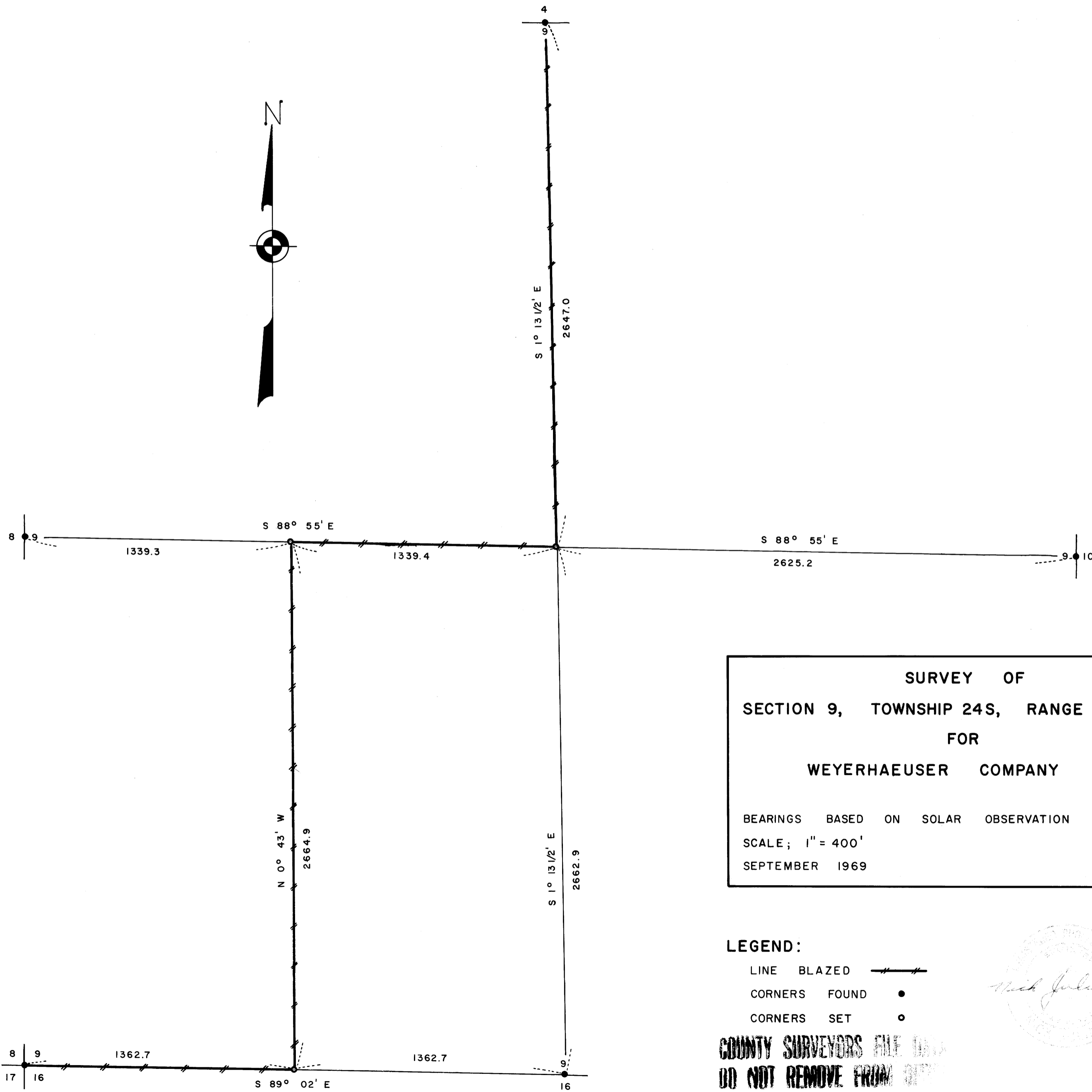


FILED
RECEIVED

SEP 18 1969

COUNTY SURVEYOR
DOUGLAS COUNTY, ORE.



SURVEY OF
SECTION 9, TOWNSHIP 24S, RANGE 8W, W.M.
FOR
WEYERHAEUSER COMPANY

BEARINGS BASED ON SOLAR OBSERVATION
SCALE; 1" = 400'
SEPTEMBER 1969

LEGEND:
LINE BLAZED // // //
CORNERS FOUND •
CORNERS SET ◦

Nick Juliano

COUNTY SURVEYORS FILE ONLY
DO NOT REMOVE FROM OFFICE

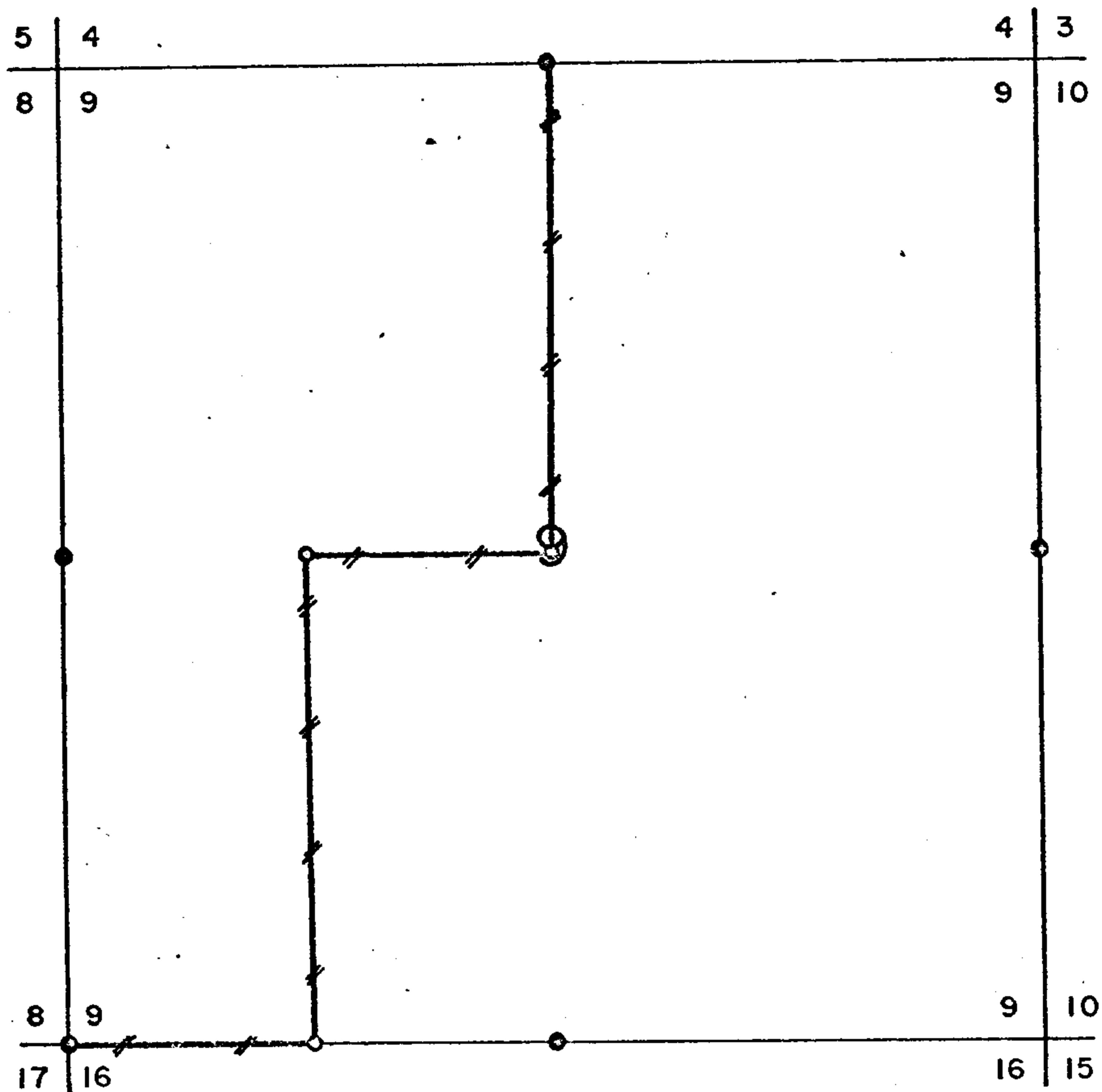
C.S. File 55/120


Map File M38-47


TRIANGLE ENGINEERING CO.

SURVEY OF

SECTION 9, TOWNSHIP 24S, RANGE 8W, W.M.



Line Blazed 

Corners Found 

Corners Set 

Transit and slope chain survey

This survey was made for Weyerhaeuser Company, North Bend, Oregon, by Nick Juliano, Oregon Professional Engineer, Reg. No. 3449

Helpers: Donald Peel and Leslie Roberts

Date of survey: July 21 through August 29, 1969

Filed for record at Douglas Co. Surveyors Office, September 1969. Douglas County Surveyors File No. _____

Distribution:
 Triangle Engineering Co.
 Weyerhaeuser Company
 Douglas Co. Surveyors Office

Reported Sept. 1969

By Nick Juliano



SUBDIVISION OF SECTION 9, TOWNSHIP 24 SOUTH, RANGE 8 WEST,
WILLAMETTE MERIDIAN

The following corners were found and used for control:

- $\frac{1}{4}$ corner common to Sections 4&9, T24S, R8W
- $\frac{1}{4}$ corner common to Sections 9&10, T24S, R8W
- $\frac{1}{4}$ corner common to Sections 9&16, T24S, R8W
- $\frac{1}{4}$ corner common to Sections 8&9, T24S, R8W
- Section corner common to Sections 8, 9, 16, 17, T24S, R8W

Closed traverses were run for the subdivision and true line determination.

Bearings were based on solar observation.

The compass rule was used in balancing the closed traverses.

A closure of not less than 1 in 5000 was obtained, both for the chaining and angles.

SETTING PROPERTY CORNERS AND DETERMINATION OF THE TRUE LINE

The center of section 9 was determined by the intersection of the N-S and E-W centerlines of said section. The CW 1/16 corner and the W 1/16 corner between Sections 9&16 were set by single proportional measurement. All subdivisional corners were set by staff compass and chain from the nearest control hub. Corner references were set by staff compass and chain using a declination of 20 degrees.

Offsets in the cardinal direction were calculated from each control hub to the true line. A staff compass was run between the offsets. Trees on both sides of the true line were marked with two blazes angled toward the true line. A notch was cut in each blaze. 2" x 8" aluminum property line tags were periodically nailed to trees along the true line. Plastic red and white striped engineers flagging was also hung along the true line.

FILED
RECEIVED

SEP 9 1969

COUNTY SURVEYOR
DOUGLAS COUNTY, ORE.

REFERENCE METHOD

All corners were referenced by the Weyerhaeuser Method:

A "W" nail was driven low in a tree. An embossed aluminum plate was nailed head high on the same tree with 3d aluminum nails. Stamped on the plate is the bearing and distance from the "W" nail to the corner.

CORNER DATA

$\frac{1}{4}$ corner common to Sections 4&9, T24S, R8W

GLO Survey Record:

Stone		
16" Fir	S30 $\frac{1}{2}$ E	28 1ks
20" Fir	N61 $\frac{1}{2}$ E	32 1ks

Evidence Found:

Stone marked $\frac{1}{4}$		
18" Fir Snag	N36E	18.5'
24" Fir Snag	N62E	21.1'

Set 1 $\frac{1}{2}$ " iron pipe with brass cap. Referenced with "W" nails and plates.

12" Fir	N79E	63.4'
16" Fir	S78W	16.1'

$\frac{1}{4}$ corner common to Sections 9&10, T24S, R8W

GLO Survey Record:

Post		
10" Fir	N28E	35 1ks
50" Fir	N07W	11 1ks

Evidence Found:

Post gone		
16" Fir (Down)	N30E	23.1' (Scribe Visible)
60" Fir	S38W	7.3' (Scribe Visible)

Set 1 $\frac{1}{2}$ " iron pipe with brass cap. Referenced with "W" nails and plates.

8" Hemlock	N65E	27.5'
60" Fir	S38W	7.3'

$\frac{9}{16}$

$\frac{1}{4}$ corner common to Sections 9&16, T24S, R8W

GLO Survey Record:

#75

Post		
24" Fir	N35W	75 lks
30" Fir	S30W	50 lks

Evidence Found:

Post gone		
50" Fir	N34W	48.5' (Scar Visible)
60" Fir	S38W	33.0' (Scribe Visible)

Set 2" iron pipe with brass cap. Referenced with "W" nails and plates.

30" Maple	S21E	24.1'
50" Fir	N34W	48.1' (Original B.T.)

8|9

$\frac{1}{4}$ corner common to Sections 8&9, T24S, R8W

GLO Survey Record:

#76

Post		
10" Hemlock	N31E	9 lks
18" Fir	S41W	23 lks

Evidence Found:

Post gone
 18" Hemlock ----- Dozed out by cat (Scar Visible)
 22" Fir ----- Dozed out by cat (Scar Visible)
 $\frac{1}{4}$ corner reset by Weyerhaeuser from road location notes

Set 2" iron pipe with brass cap. Referenced with "W" nails and plates.

32" Fir Stump	S45E	31.7'
74" Fir Stump	North	52.3'

$\frac{8}{17} | \frac{9}{16}$

Section corner common to Sections 8, 9, 16, 17, T24S, R8W

GLO Survey Record:

Post		
24" Fir	N52E	31 lks
22" Fir	S18 $\frac{1}{2}$ E	34 lks
24" Fir	S57W	10 lks
15" Fir	N31W	9 lks

Evidence Found:

Post gone		
BLM Brass Cap		
18" Fir	N25E	35.6'
34" Fir	S07E	122.1'
28" Fir	S69W	122.2'
22" Fir	N29W	24.0'

as 55/120-1d

55/120-

Ctr. Center of Section 9, T24S, R8W

Sec. 9 Set 2" iron pipe with brass cap. Referenced with "W" nails and plates.

#77 32" Fir S63W 25.9'
 40" Fir N01W 18.0'

Ctr. Center west 1/16 corner Section 9, T24S, R8W

W 1/16 Set 2" iron pipe with brass cap. Referenced with "W" nails and plates.

 26" Fir S05E 8.4'
 32" Fir S31W 19.8'

W 1/16 West 1/16 corner between Sections 9&16, T24S, R8W

$\frac{9}{16}$ Set 2" iron pipe with brass cap. Referenced with "W" nails and plates.

 10" Hemlock N34W 16.2'
 14" Hemlock S37E 25.6'

CS 55/120-1E

S. File No. 55/120-

FILED
RECEIVED

SEP 9 1969

COUNTY SURVEYOR
DOUGLAS COUNTY, ORE.

C.S File 55 / 120

Map File M38 + 47