

SURVEY TO ESTABLISH PROPERTY CORNERS
IN SEC. 18, T 27 S, R 5 W. WM.
DOUGLAS COUNTY, ORE.

SURVEYED BY - W. S. BARNES
SURVEYED FOR - DALE HERMAN

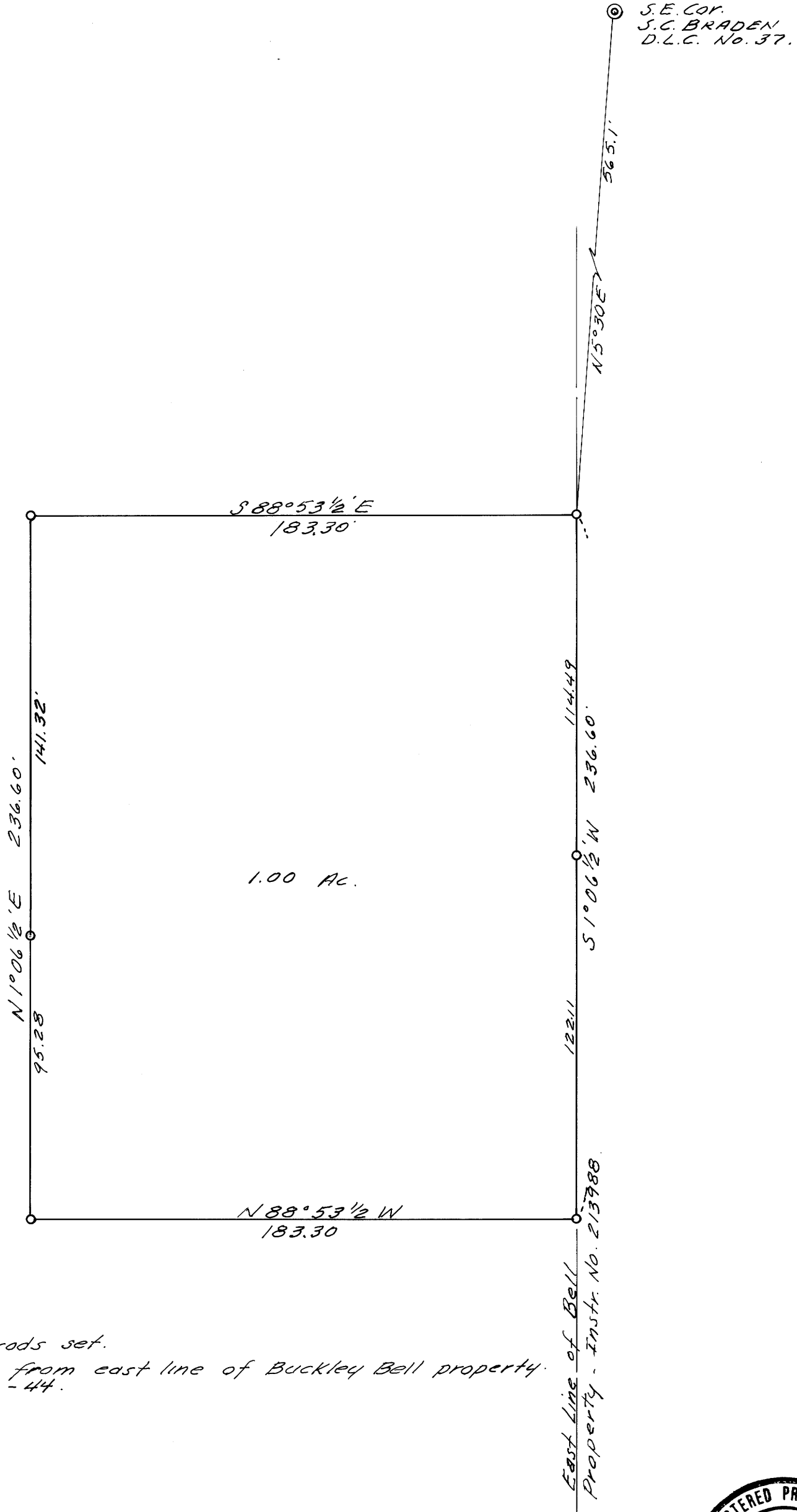
AUG. 1969
SCALE 1" = 40'

FILED
RECORDED

AUG 19 1969

COUNTY SURVEYOR
DOUGLAS COUNTY, ORE.

COUNTY SURVEYORS FILE DATA
DO NOT REMOVE FROM OFFICE



o Denotes 3/4" iron rods set.
Base bearing taken from east line of Buckley Bell property.
See C.S. File M 26 - 44.

