

SURVEY TO ESTABLISH PROPERTY CORNERS  
IN SEC. 18, T 27S, R 5W. W.M.  
DOUGLAS COUNTY, OREGON.

SURVEYED FOR - MRS. B. BELL  
SURVEYED BY - W.S. BARNES

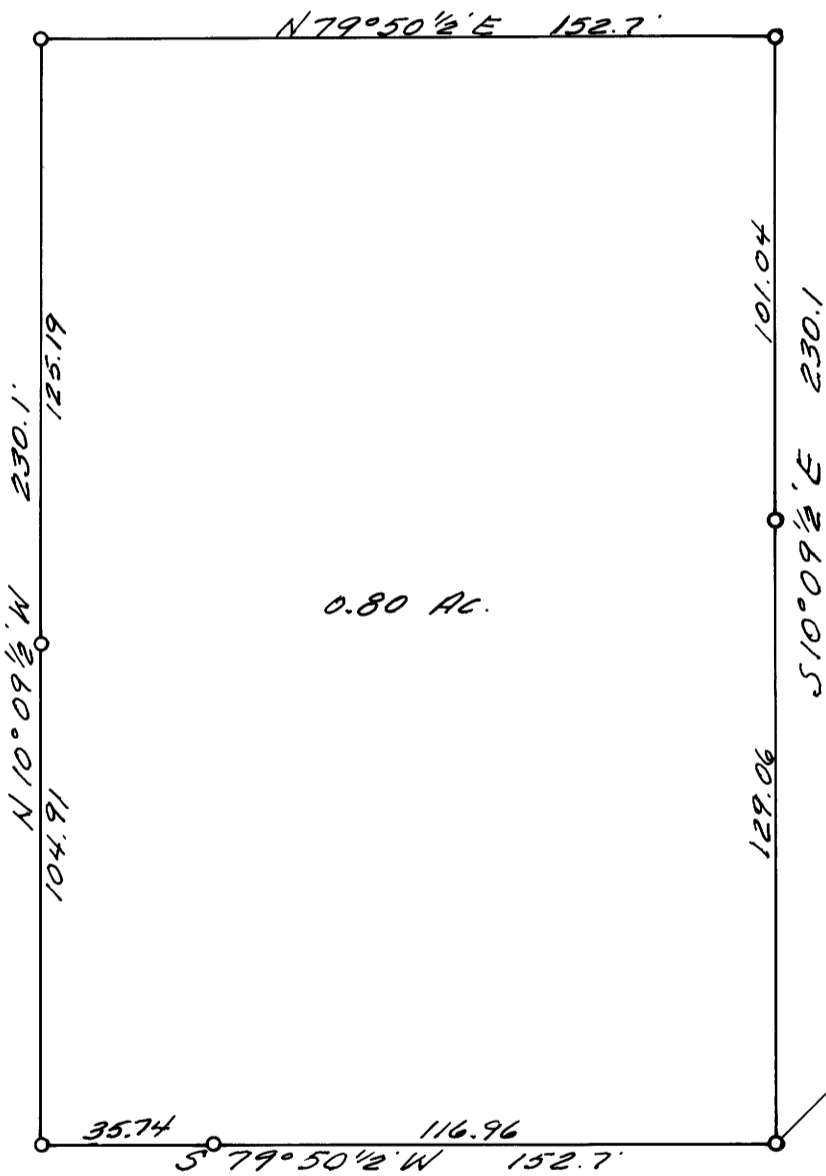
AUG. 1969  
SCALE 1" = 40'

COUNTY SURVEYORS FILE DATA  
DO NOT REMOVE FROM OFFICE

FILED *LL*  
FILED

1969

COUNTY SURVEYOR  
DOUGLAS COUNTY, ORE.



- o Denotes 3/4" iron rods set.
- Base bearing taken from east line of Buckley Bell property.
- See C.S. File M 26-44.

