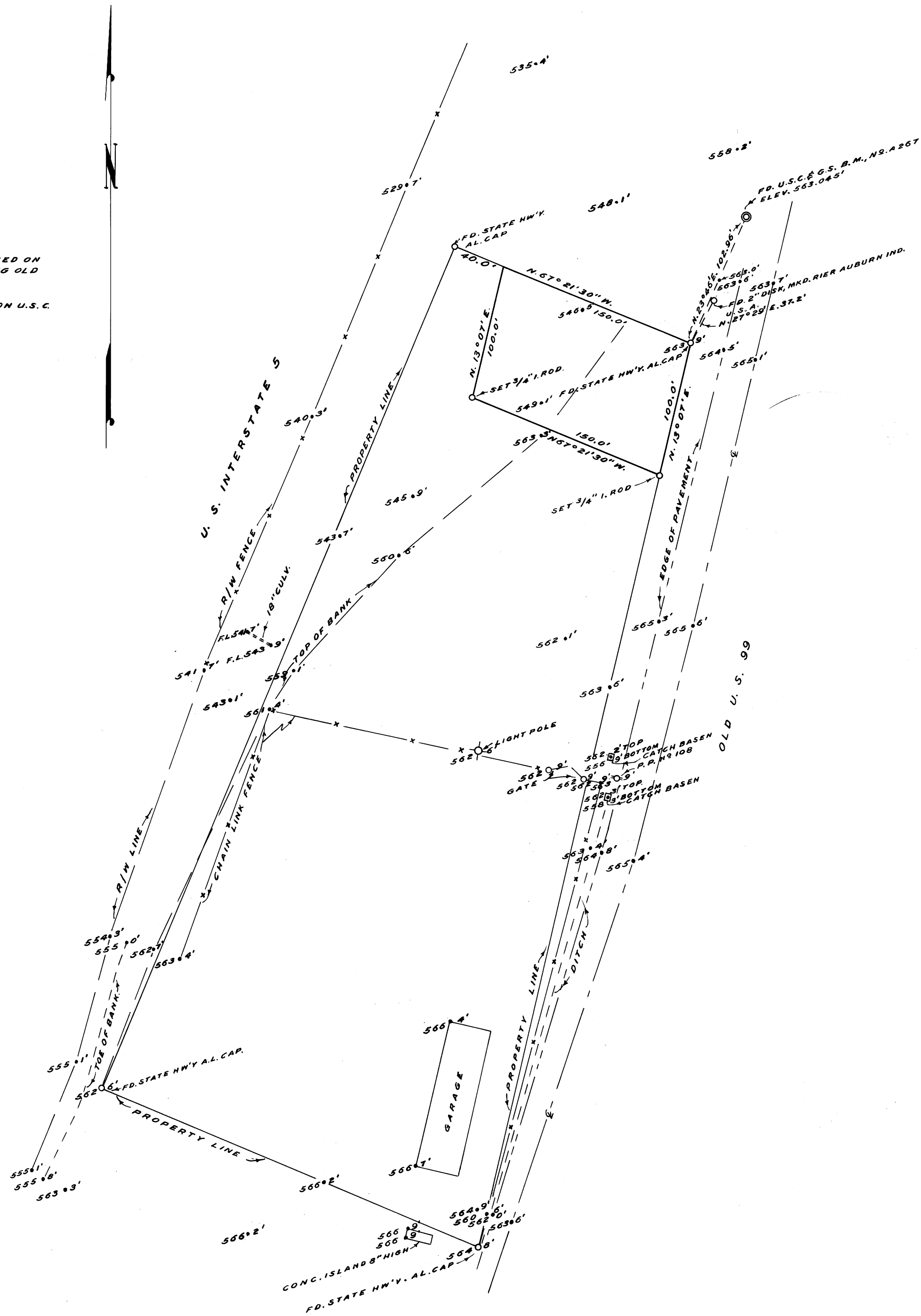


NOTE: - BEARINGS BASED ON  
N 13° 07' E, ALONG OLD  
U.S. 9999.  
ELEVATIONS BASED ON U.S.C.  
G.S. B.M. NR. A 267.



COUNTY SURVEYORS FILE THIS  
DO NOT REMOVE FROM OFFICE

COUNTY SURVEYOR'S OFFICE  
DOUGLAS COUNTY, OREGON

TOPOGRAPHY SURVEY IN  
SECTION 24, T.26 S., R.6 W. W.M.

JAMES W. BYRON COUNTY SURVEYOR  
SURVEYED SEPT. 4, 1969 SCALE: 1" = 60'  
SURVEYED FOR COUNTY LAND DEPT.

REGISTERED  
SURVEYOR  
JAMES W. BYRON  
1969