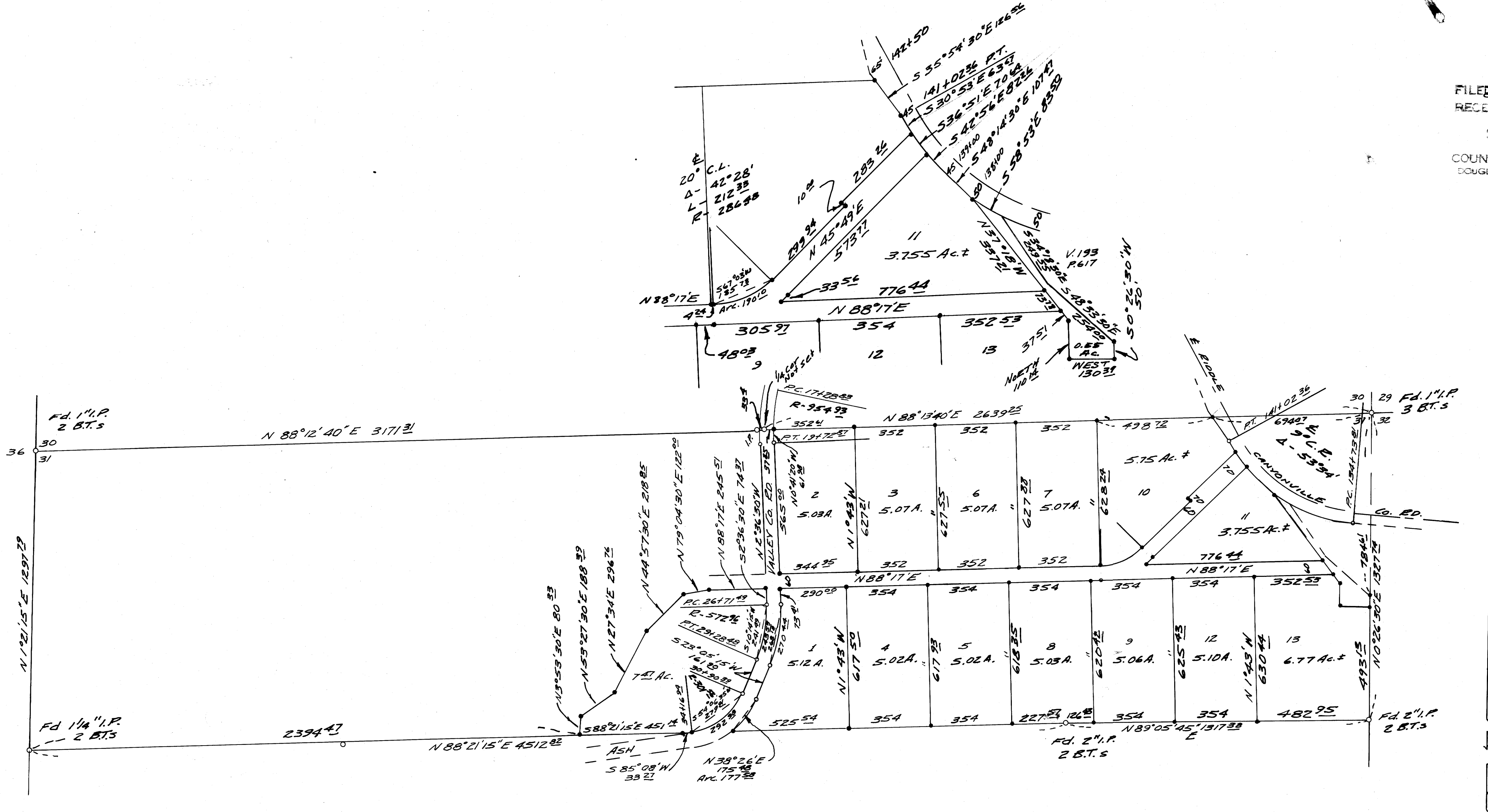


FILED  
RECEIVED

SEP 10 1969

COUNTY SURVEYOR  
DOUGLAS COUNTY, ORE.

M38-41



- Fd. MONUMENTS
- COUNTY E/W PINS
- SET 3/4" or 5/8" I.R.

Bearings Based on  
East Line Ash Cr. Co. Rd.  
For record of Fd. Monuments  
see C.S. M20-24 &  
M 3-17

**DO NOT REMOVE FROM OFFICE**

REGISTERED  
OREGON  
LAND SURVEYOR  
BRUCE R. ROGERS  
JULY 10, 1964  
600

SURVEY FOR DEED DESCRIPTION  
IN THE NORTH 1/2 OF SEC. 31, T30S, R.5 W.W.M.  
SURVEYED FOR WM. THOMPSON  
BY BRUCE R. ROGERS  
MAY, 1969  
1" = 300'

M38-41