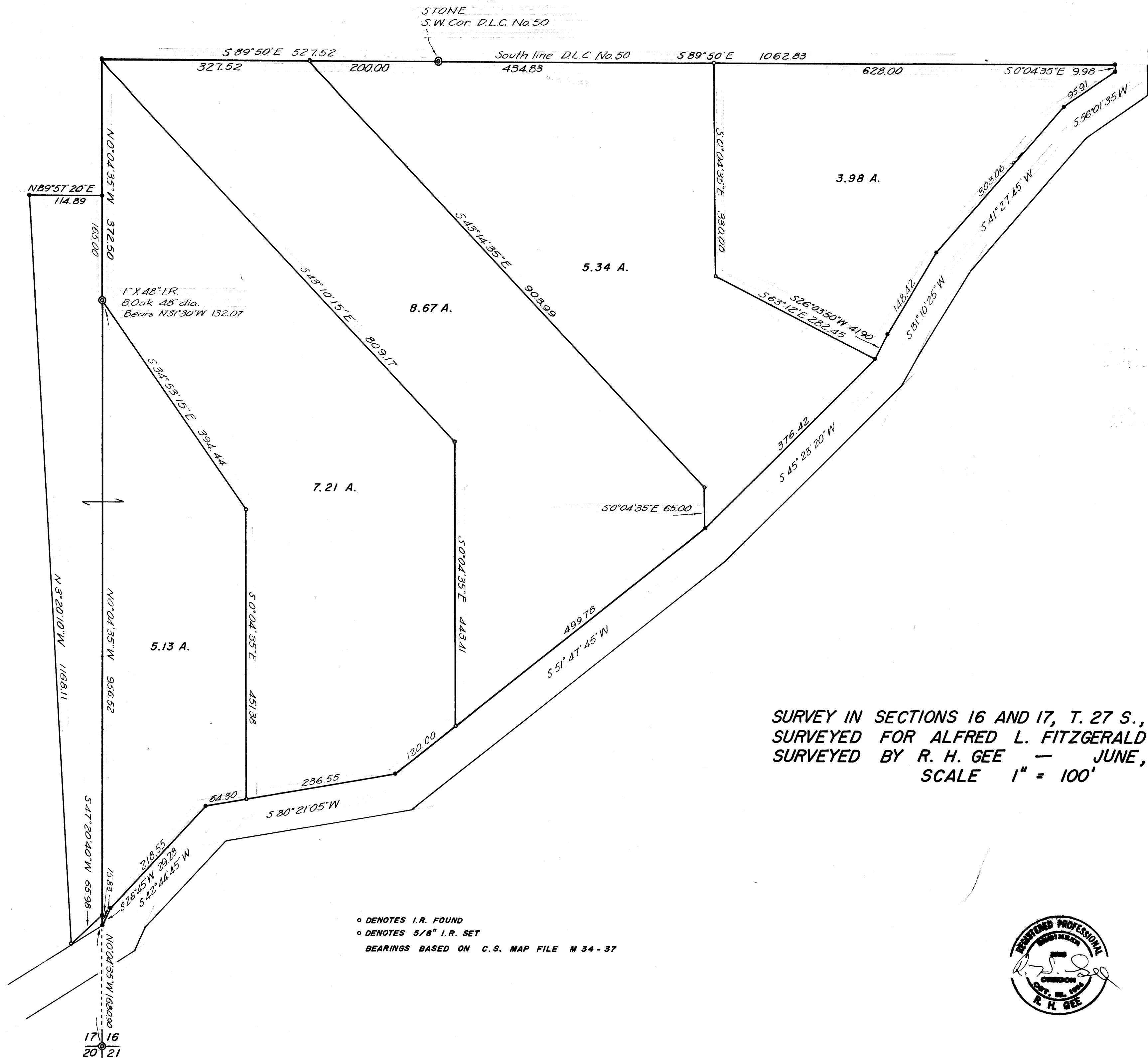


FILED
RECEIVED

JUN 13 1969

COUNTY SURVEYOR
DOUGLAS COUNTY, ORE

MAP FILE M 38 7 4



SURVEY IN SECTIONS 16 AND 17, T. 27 S., R. 6 W., W. M.
 SURVEYED FOR ALFRED L. FITZGERALD
 SURVEYED BY R. H. GEE — JUNE, 1969
 SCALE 1" = 100'



COUNTY SURVEYORS FILE DATA
 DO NOT REMOVE FROM OFFICE

MAP FILE M 38 7 4