

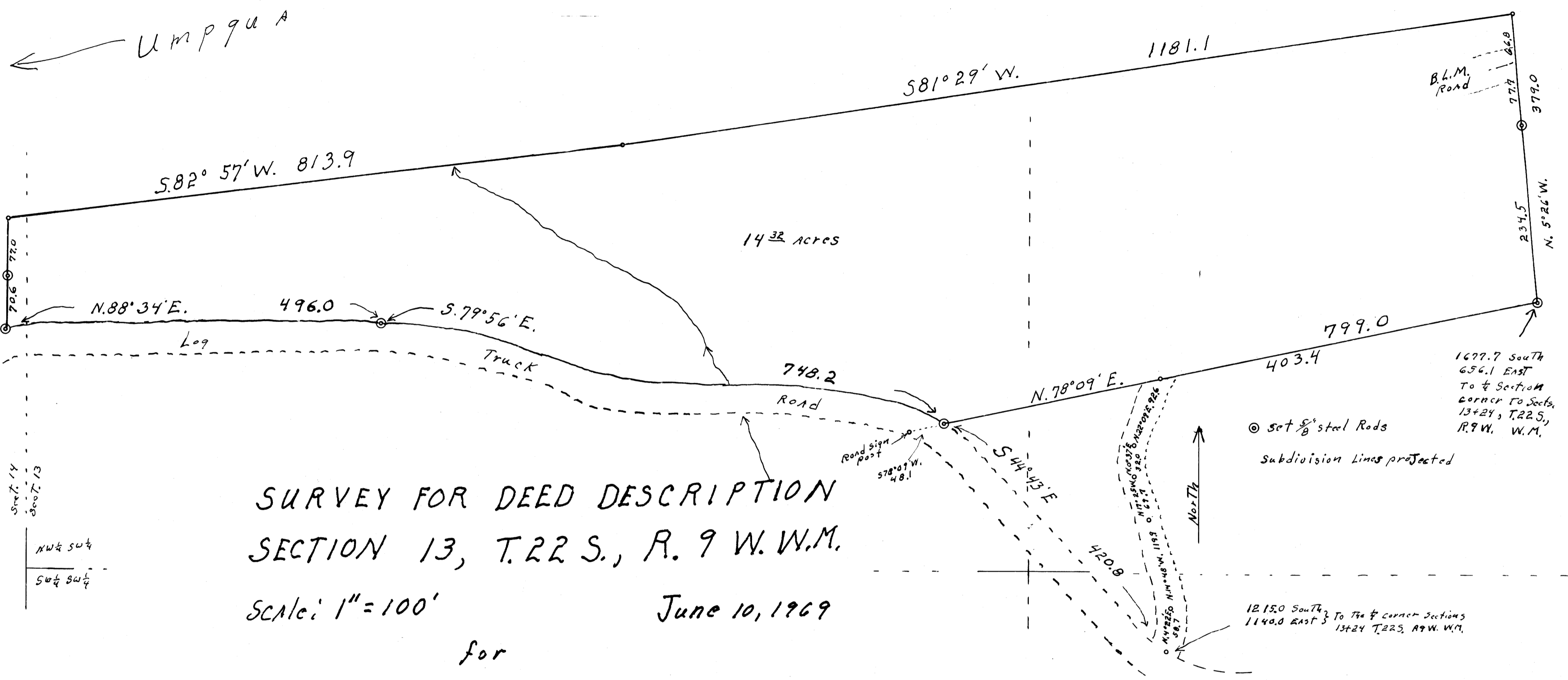
FILED
RECEIVED

SEP 3 1969

COUNTY SURVEYOR
DOUGLAS COUNTY, ORE.

M38-39

River ←



SURVEY FOR DEED DESCRIPTION
SECTION 13, T.22 S., R. 9 W. W.M.
Scale: 1" = 100'
June 10, 1969
for
INTERNATIONAL PAPER COMPANY

REGISTERED
OREGON
LAND SURVEYOR
Wilford N. Haines
MAY 7, 1948
WILFORD N. HAINES
239

COMMON SURVEYING FILE
DO NOT REMOVE FROM OFFICE

M38-39