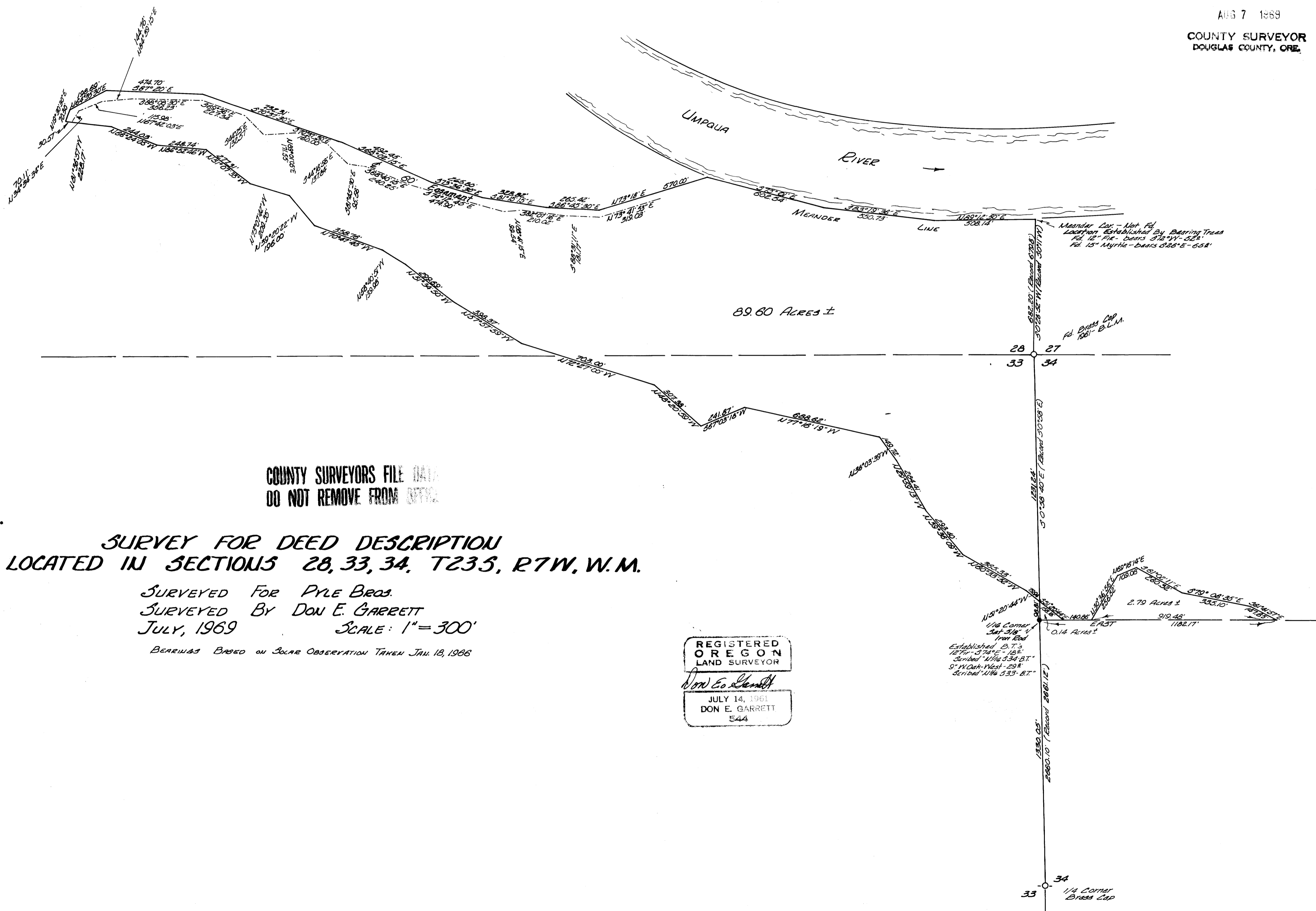


FILED  
RECEIVED

AUG 7 1969

COUNTY SURVEYOR  
DOUGLAS COUNTY, ORE.



COUNTY SURVEYORS FILE DATA  
DO NOT REMOVE FROM OFFICE

**SURVEY FOR DEED DESCRIPTION  
LOCATED IN SECTIONS 28, 33, 34, T23S, R7W, W.M.**

SURVEYED FOR PYLE BROS.  
SURVEYED BY DON E. GARRETT  
JULY, 1969 SCALE: 1" = 300'  
BEARINGS BASED ON SOLAR OBSERVATION TAKEN JAN. 18, 1966

REGISTERED  
OREGON  
LAND SURVEYOR  
*Don E. Garrett*  
JULY 14, 1961  
DON E. GARRETT  
544

M 38 - 32

M 38 - 32