

COUNTY SURVEYORS FILE DATA
DO NOT REMOVE FROM OFFICE

FILED
RECEIVED

AUG 6 1969

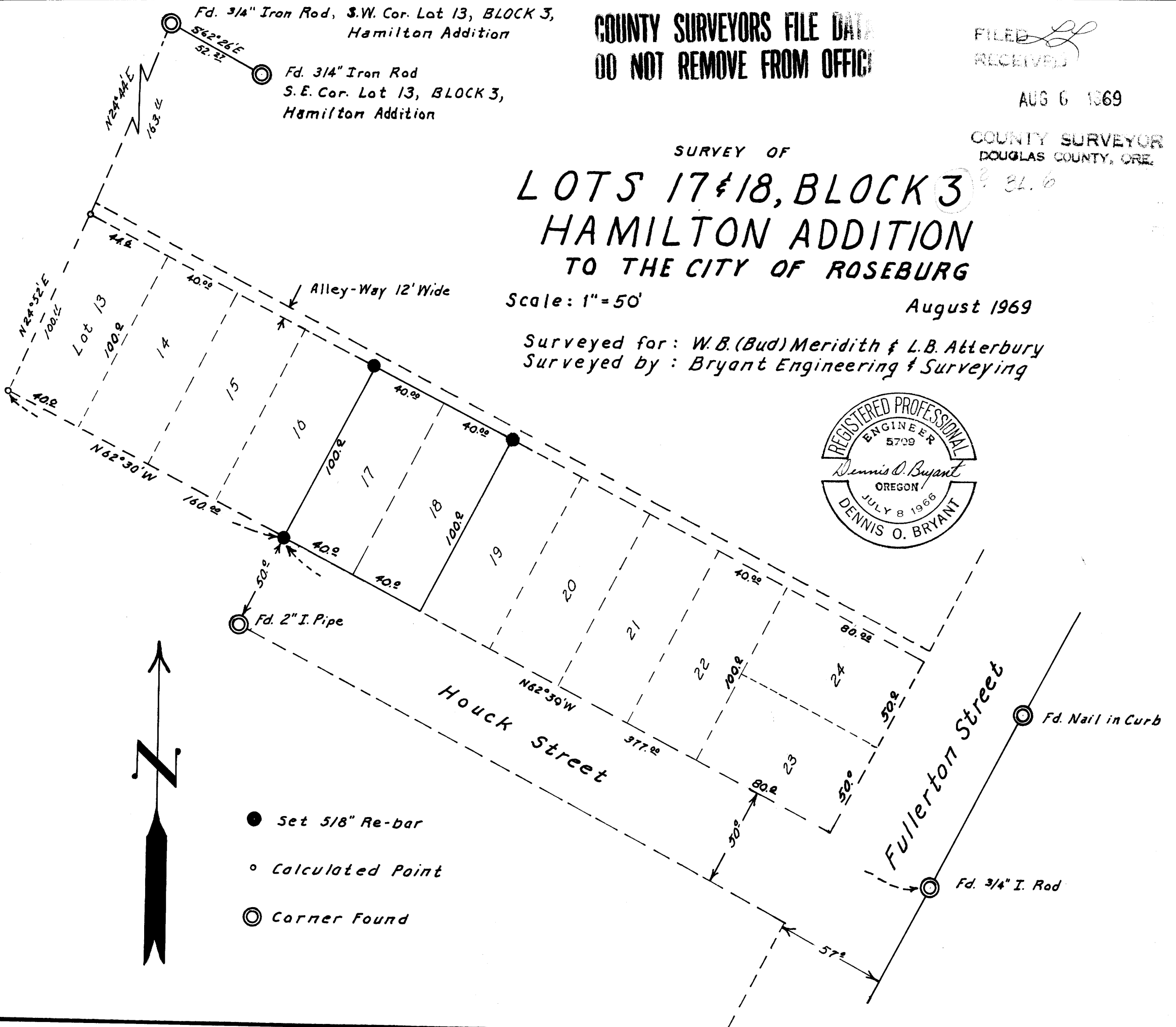
COUNTY SURVEYOR
DOUGLAS COUNTY, ORE.

SURVEY OF
LOTS 17 & 18, BLOCK 3
HAMILTON ADDITION
TO THE CITY OF ROSEBURG

Scale: 1" = 50'

August 1969

Surveyed for: W.B. (Bud) Meridith & L.B. Atterbury
Surveyed by: Bryant Engineering & Surveying



- Set 5/8" Re-bar
- Calculated Point
- ⊙ Corner Found

