

COUNTY SURVEYORS FILE DATA
DO NOT REMOVE FROM OFFICE

FILED
RECEIVED

AUG 11 1969

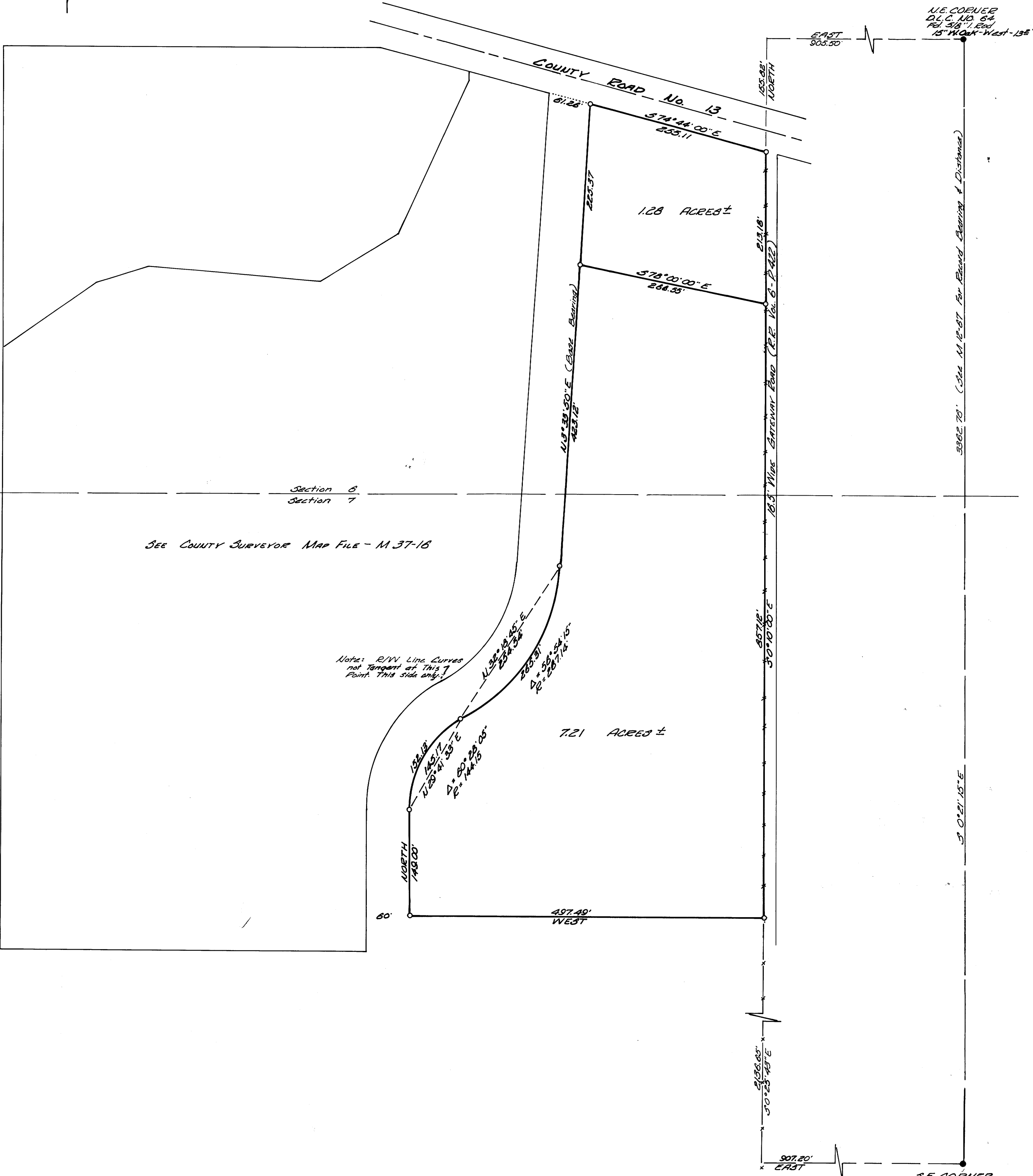
COUNTY SURVEYOR
DOUGLAS COUNTY, ORE.

SURVEY IN SECTIONS 6 & 7, T27S, R6W, W.M.

SURVEYED FOR HERMAN STOFFEL
SURVEYED BY DON E. GARRETT
JULY, 1969 SCALE: 1" = 100'

NOTE: SEE COUNTY SURVEYORS MAP FILE M 37-16 FOR BASE OF BEARINGS
0 - SET 5/8" IRON RODS

REGISTERED
OREGON
LAND SURVEYOR
Don E. Garrett
JULY 14, 1961
DON E. GARRETT
544



N.E. CORNER
D.C. NO. 84
FD 318 1, 100
15" WOOD - West - 135'

S.E. CORNER
D.C. NO. 84
FD 318 1, 100
21" DOW. PIN
South - 12.0'
22" DOW. PIN
5 75° W - 175'

SEE COUNTY SURVEYOR MAP FILE - M 37-16

Notes: R/W Line Curves
not tangent at this
Point. This side only.