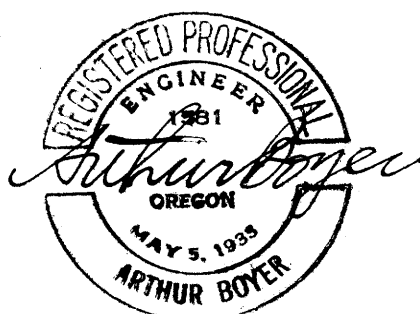
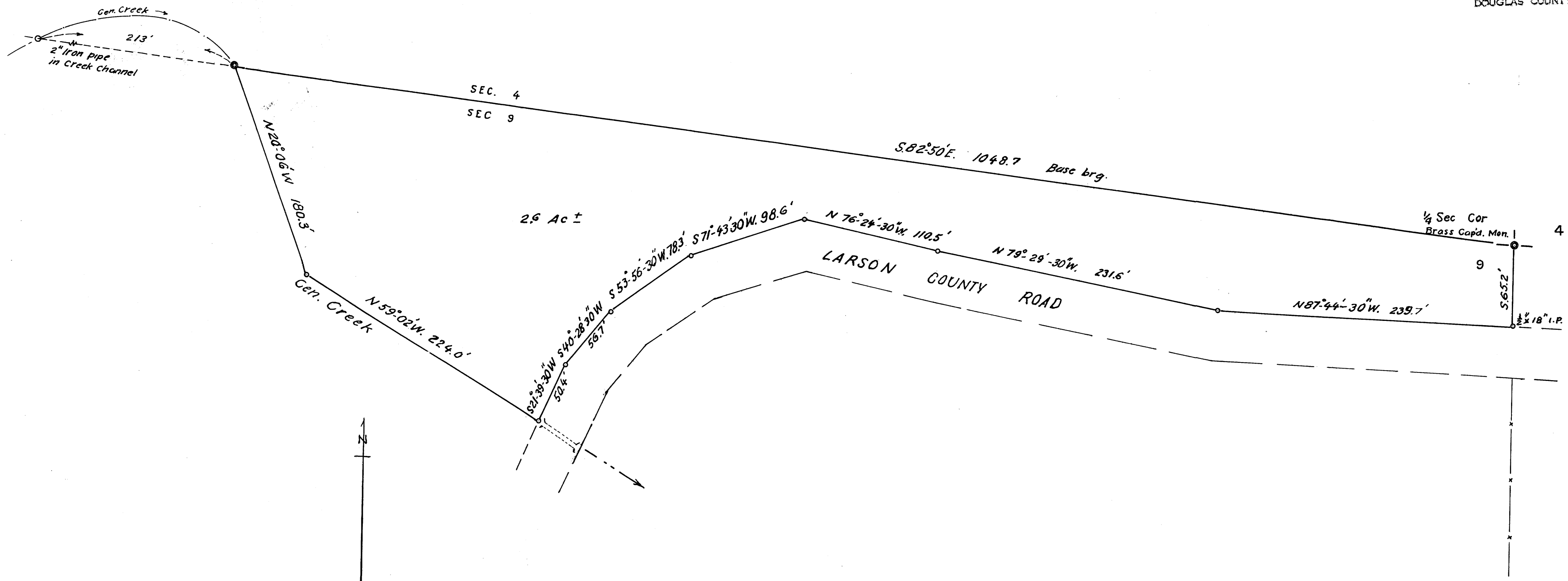


FILED
RECEIVED

JUL 30 1969

COUNTY SURVEYOR
DOUGLAS COUNTY, ORE.

M38-26



R. E. "BILL" WYLIE TO
 DAVID L. WYLIE, RT. 4, BOX 1150, ROSEBURG.
 ACREAGE IN NE¹/₄NW¹/₄ SEC. 9, T.28S; R.7W; W.M.
 DOUGLAS COUNTY, ORE.
 JULY '69 1" = 60 FT.

COUNTY SURVEYORS FILE ONLY
 DO NOT REMOVE FROM OFFICE

M38-26