

COUNTY SURVEYORS FILE DATA
DO NOT REMOVE FROM OFFICE

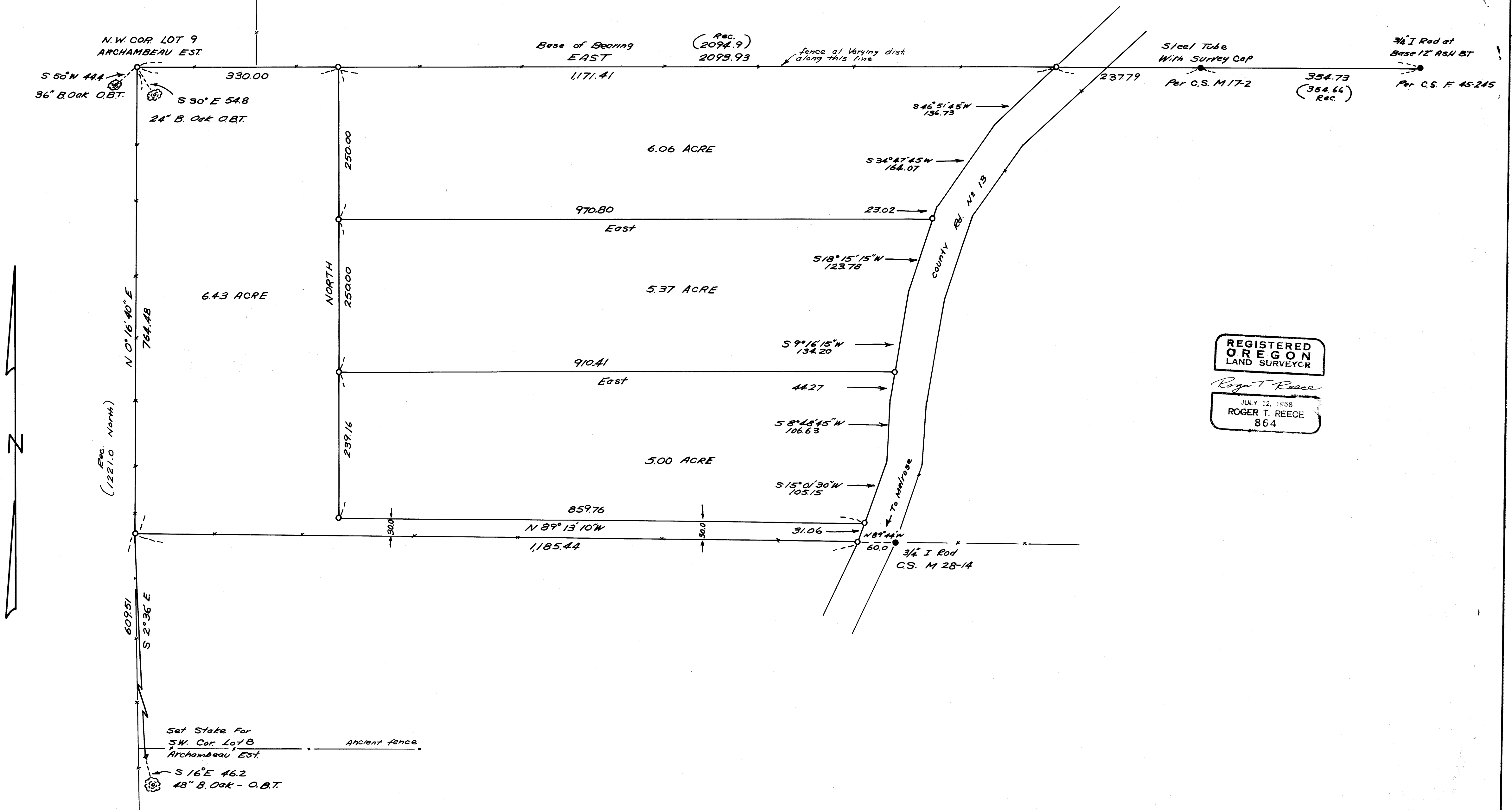
SURVEY TO ESTABLISH PROPERTY CORNERS ARCHAMBEAU D.L.C. NO. 65 T26S, R6W, W.M.

SURVEYED FOR R. T. REECE
SURVEYED BY R. T. REECE

JUNE 1969
SCALE 1"=100'

FILED
RECEIVED
JUL 8 1969
COUNTY SURVEYOR
DOUGLAS COUNTY, ORE.

- o denotes Set 5/8" Iron Pin
- denotes Corners found as shown



REGISTERED
OREGON
LAND SURVEYOR

Roger T. Reece

JULY 12, 1968
ROGER T. REECE
864

MAP FILE M.387.29

MAP FILE M.387.29