

COUNTY SURVEYORS FILE DATA
DO NOT REMOVE FROM OFFICE

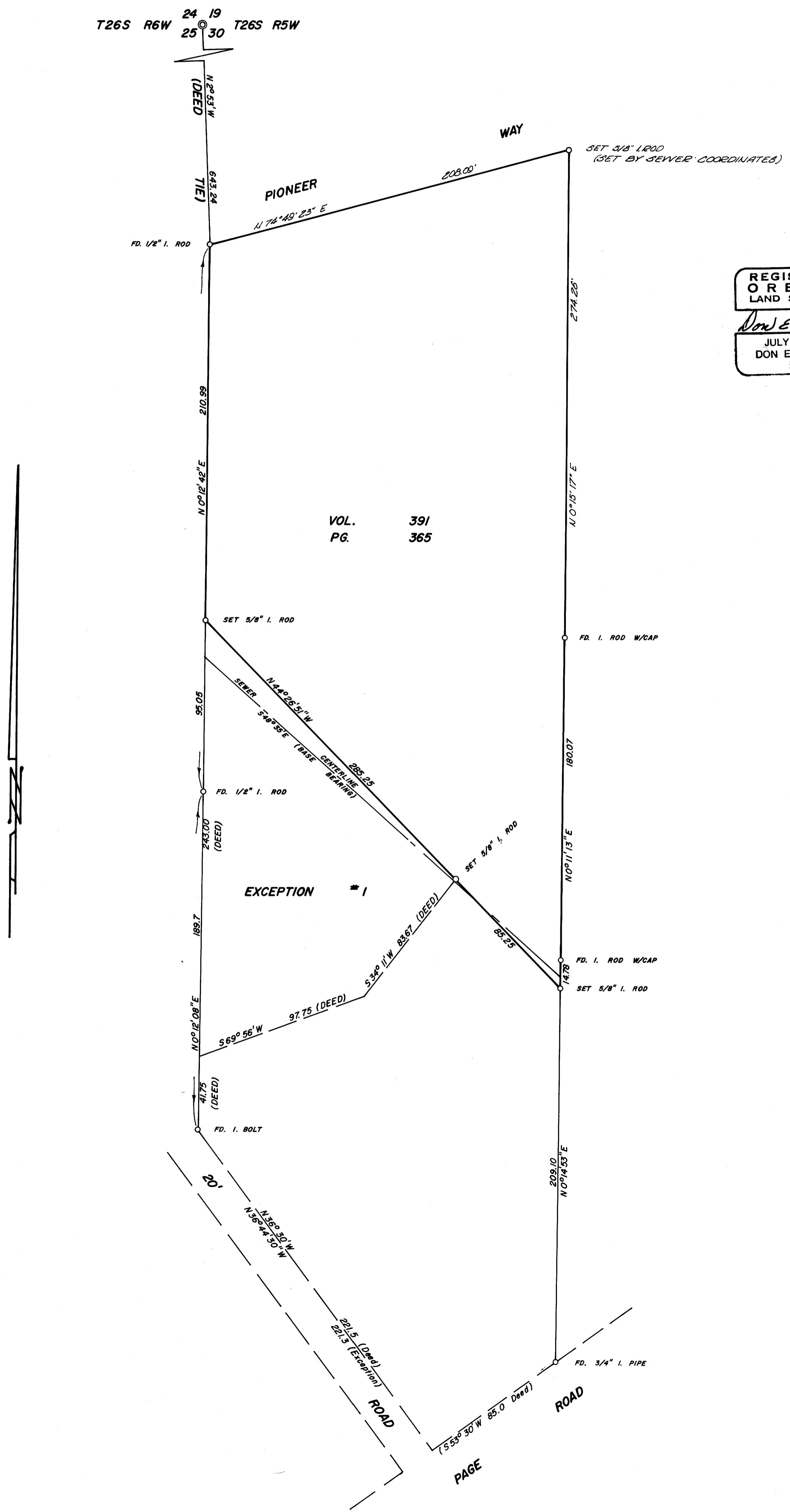
FILED
RECEIVED

JUL 18 1969

COUNTY SURVEYOR
DOUGLAS COUNTY, ORE.

SURVEY TO REESTABLISH PROPERTY CORNERS IN SECT. 30, T26S, R5W, W.M.
Surveyed for the North Umpqua Sanitary Dist. by Don E. Garrett
July 1969

Scale 1" = 40'



VOL. 391
PG. 365

REGISTERED
OREGON
LAND SURVEYOR
Don E. Garrett
JULY 14, 1961
DON E. GARRETT
544