

COUNTY SURVEYORS FILE DATA
DO NOT REMOVE FROM OFFICE

SURVEYED FOR DEED DESCRIPTION IN SECTION 21, TWP. 26S, R. 5W, WM.

SURVEY FOR ELI HALL

BY BAUGHMAN & ACKARET INC.

SCALE 1" = 100'

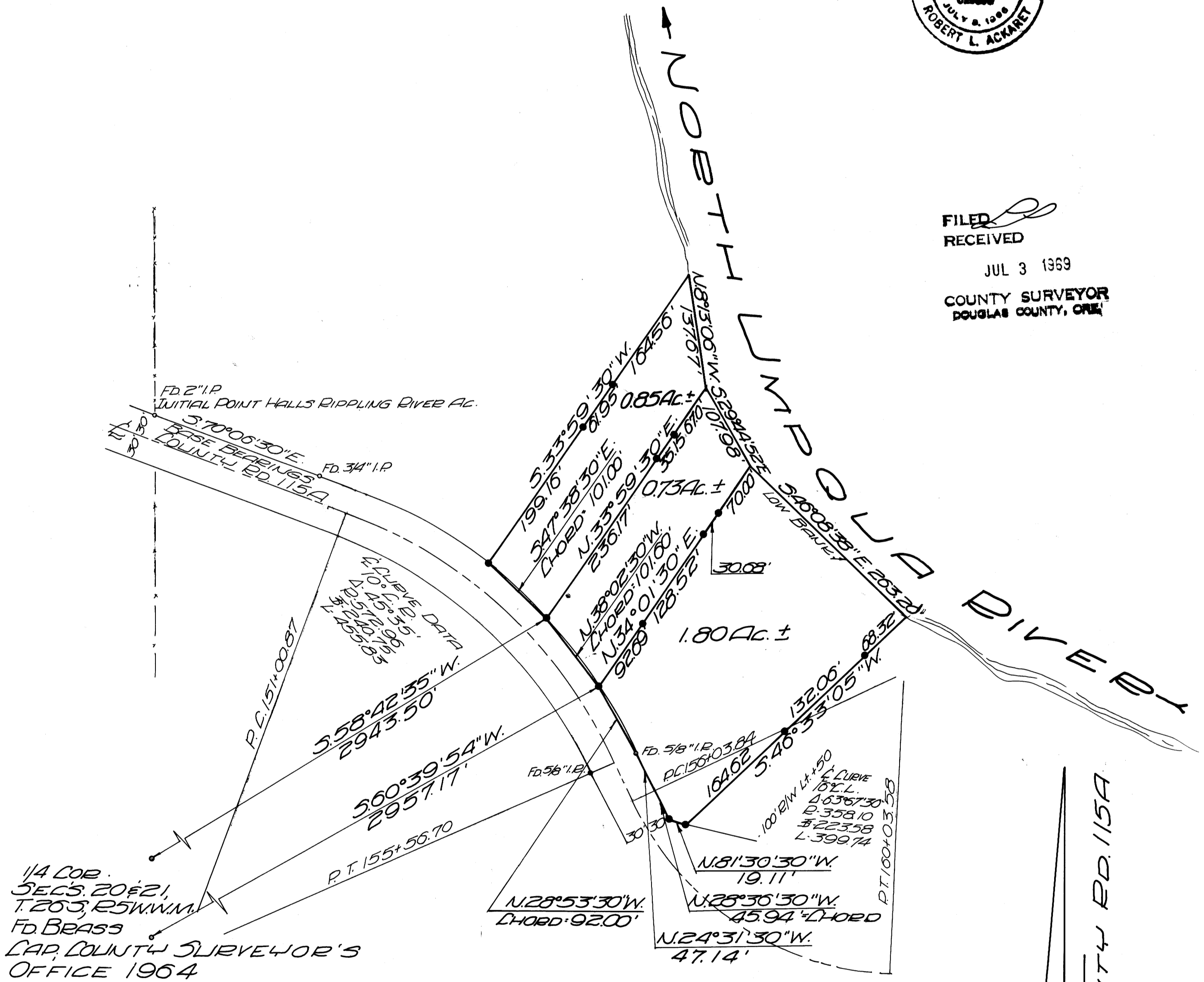
JUNE 1969



FILED
RECEIVED

JUL 3 1969

COUNTY SURVEYOR
DOUGLAS COUNTY, OREGON



LEGEND:

- SET 3/4" IRON ROD
- AS SHOWN